



Cricklewood Broadway, NW2

£426 Per week

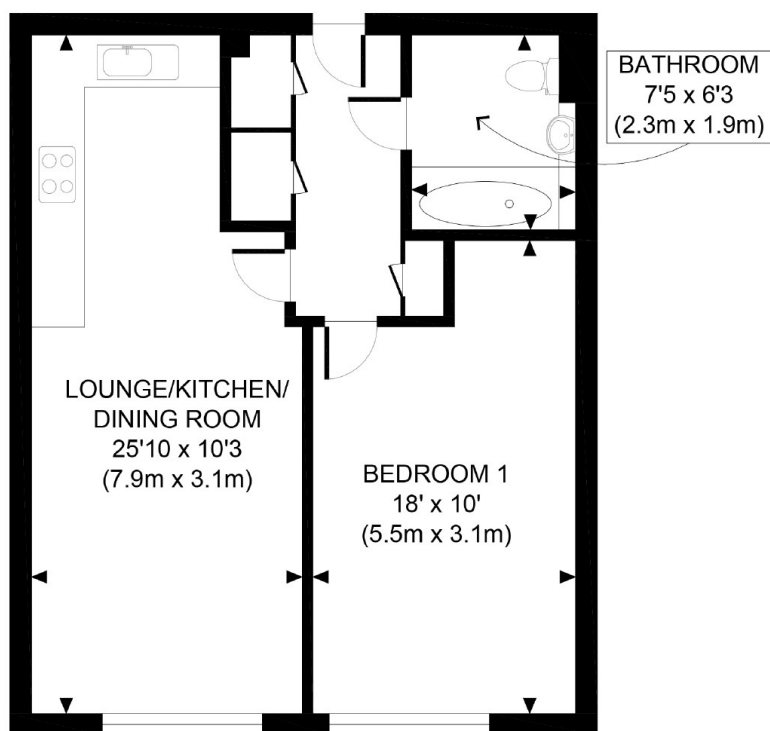
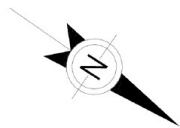
This one bedroom second floor apartment is ideally situated in Cricklewood. The property has an open plan living area with a integrated kitchen, great storage space and a fully tiled bathroom. The building has lift access, bike storage and a well maintained communal garden.

Bentley Court is located on Cricklewood Broadway which has many local amenities, shops and restaurants. There are multiple bus routes leading into Central London and Kilburn station, Brondesbury overground and Cricklewood Thameslink are also nearby.

Features

- One Bedroom
- Open Plan
- Integrated Kitchen
- Good Storage
- Communal Garden
- Ideally Situated

Cricklewood Broadway, London, NW2



SECOND FLOOR
GROSS INTERNAL
FLOOR AREA 535 SQ FT

APPROX. GROSS INTERNAL FLOOR AREA 535 SQ FT / 50 SQM

Ref:

Copyright **photoplan** 

Disclaimer: Floor plan measurements are approximate and are for illustrative purposes only. While we do not doubt the floor plan accuracy and completeness, you or your advisors should conduct a careful, independent investigation of the property in respect of monetary valuation