



Shoot Up Hill, NW2

£455,000

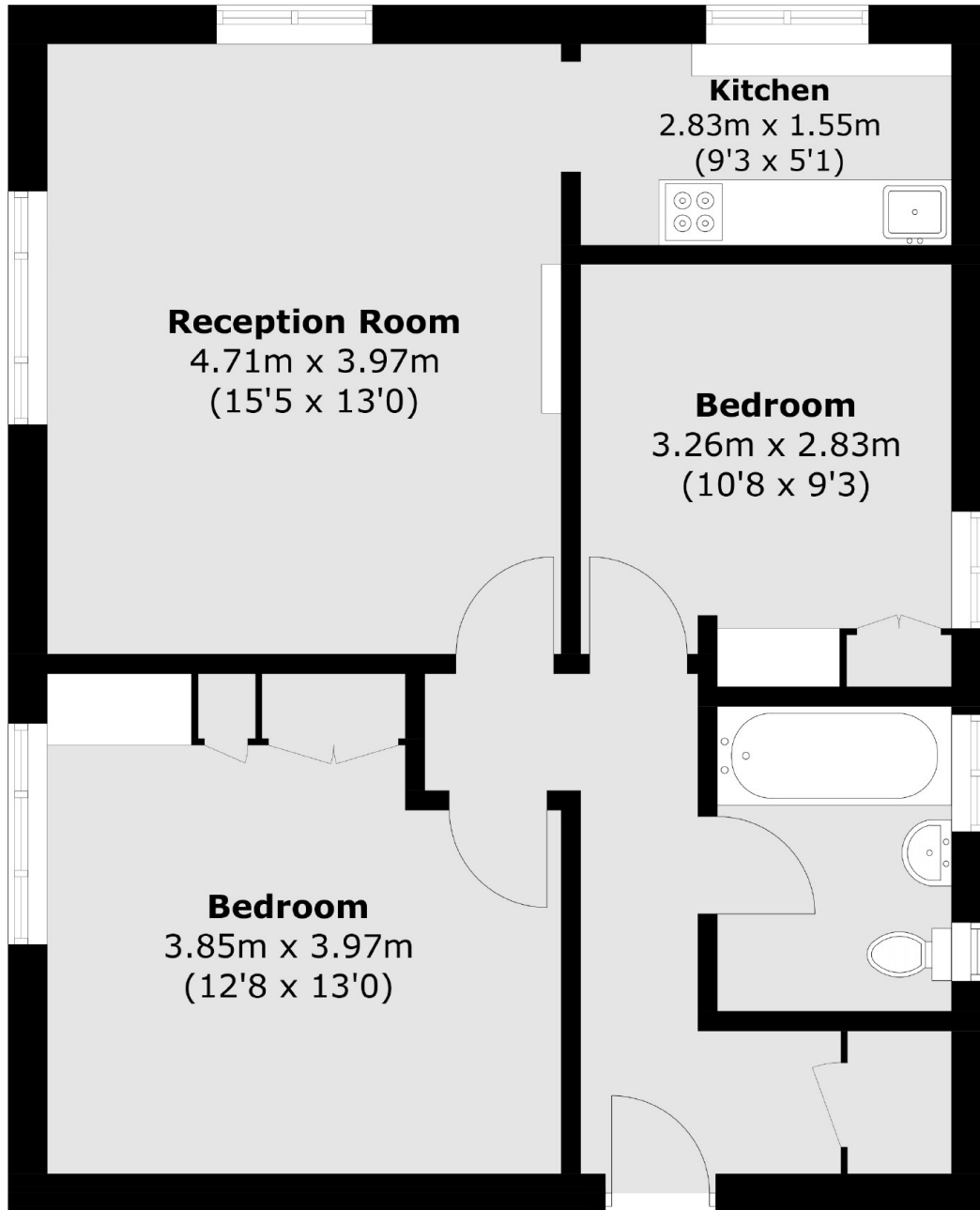
Situated in this sought after purpose built block this two double bedroom flat has a separate kitchen, spacious reception room, ample storage, bathroom and separate WC. The flat is located on the second floor with lift access and comes with access to communal gardens, off-street parking, a garage and no onward chain.

Wiltern Court is close to the trendy shops and bars of West End Lane and is within easy reach of Kilburn station (Jubilee Line) and Brondesbury station (Overground) offering excellent access to the City.

Features

- Two Double Bedrooms
- No Onward Chain
- Second Floor With Lift Access
- Separate Kitchen
- Newly Extended Lease
- Off Street Parking And Garage

Shoot Up Hill, London, NW2



Total area (approx.): 60.6 sq. m (652.3 sq. ft)