



Johnston Terrace, NW2

£615,000

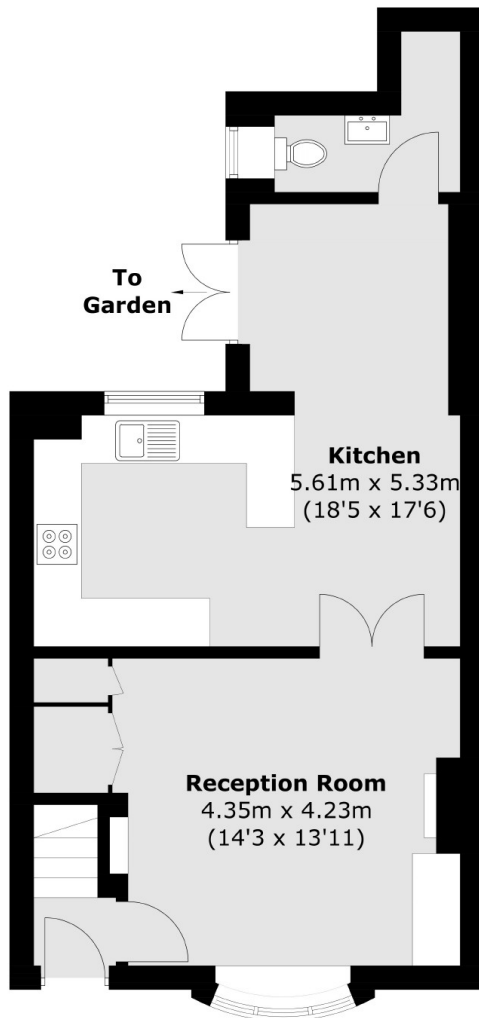
A freehold "railway cottage" updated throughout and offering a spacious, extended eat-in kitchen, separate reception room, two double bedrooms, modern bathroom, separate WC/utility room, ample storage and access to a private courtyard and communal gardens.

Johnston Terrace is located at the heart of the quiet Railway Cottages 'The Terraces' and is part of a welcoming community. Numerous bus routes and Cricklewood Station (Thameslink) are within easy reach for access to Central London.

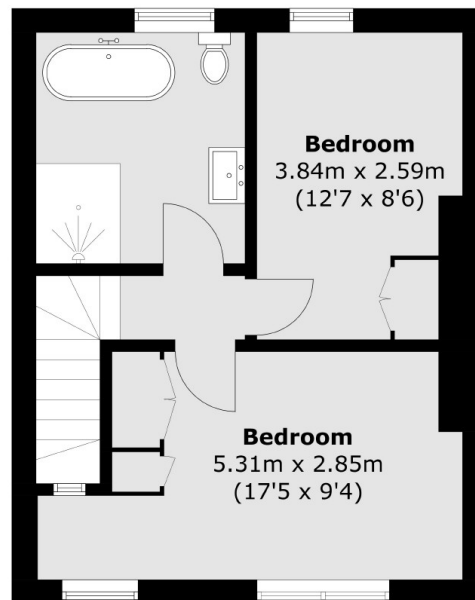
Features

- Two double bedrooms
- Railway Cottage
- Quiet residential Area
- Freehold house
- Separate Reception
- Eat-In Kitchen

Johnston Terrace, London, NW2



Ground Floor



First Floor

Total area (approx.): 83.7 sq. m (900.9 sq. ft)