



## Ivy Road, NW2

£1,038 Per week

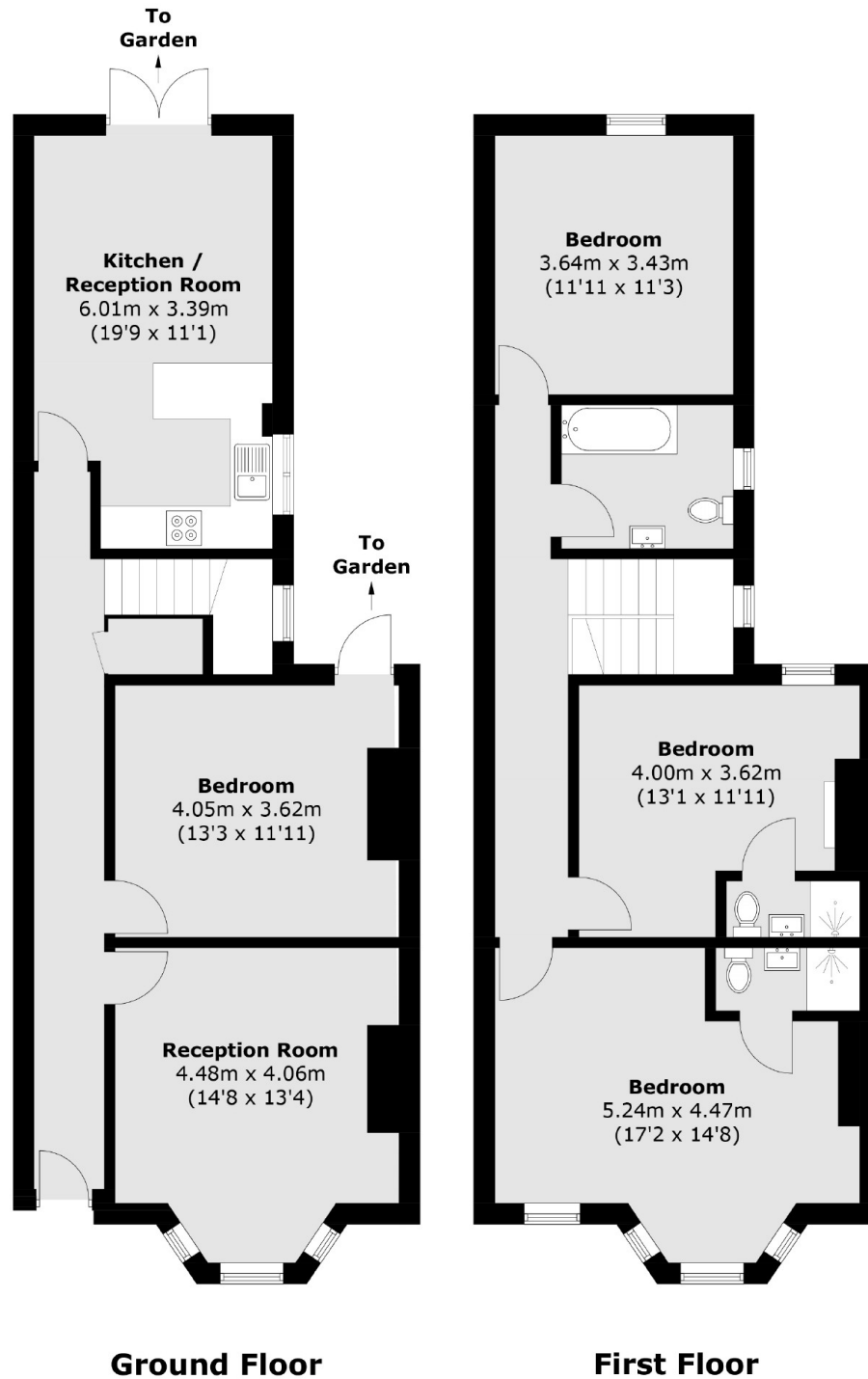
This newly refurbished four bedroom family home spread over two floors is ideally situated close to schools and transport links. The property has spacious reception room, a eat-in family kitchen, a tiled family bathroom, two ensuite shower rooms, good storage space, period features and a private garden.

Ivy Road is ideally situated close to many local amenities, deli's, shops and cafés. Gladstone Park is nearby and you also have good transport links to the city and easy motorway access. Willesden Green station and Cricklewood Thameslink are also close by.

### Features

Newly Refurbished  
Four Bedrooms  
Three Bathrooms  
Two Receptions  
Private Garden  
Ideally Situated

# Ivy Road, London, NW2



Total area (approx.): 133.4 sq. m (1,435.8 sq. ft)