



## Mora Road, NW2

### £800,000

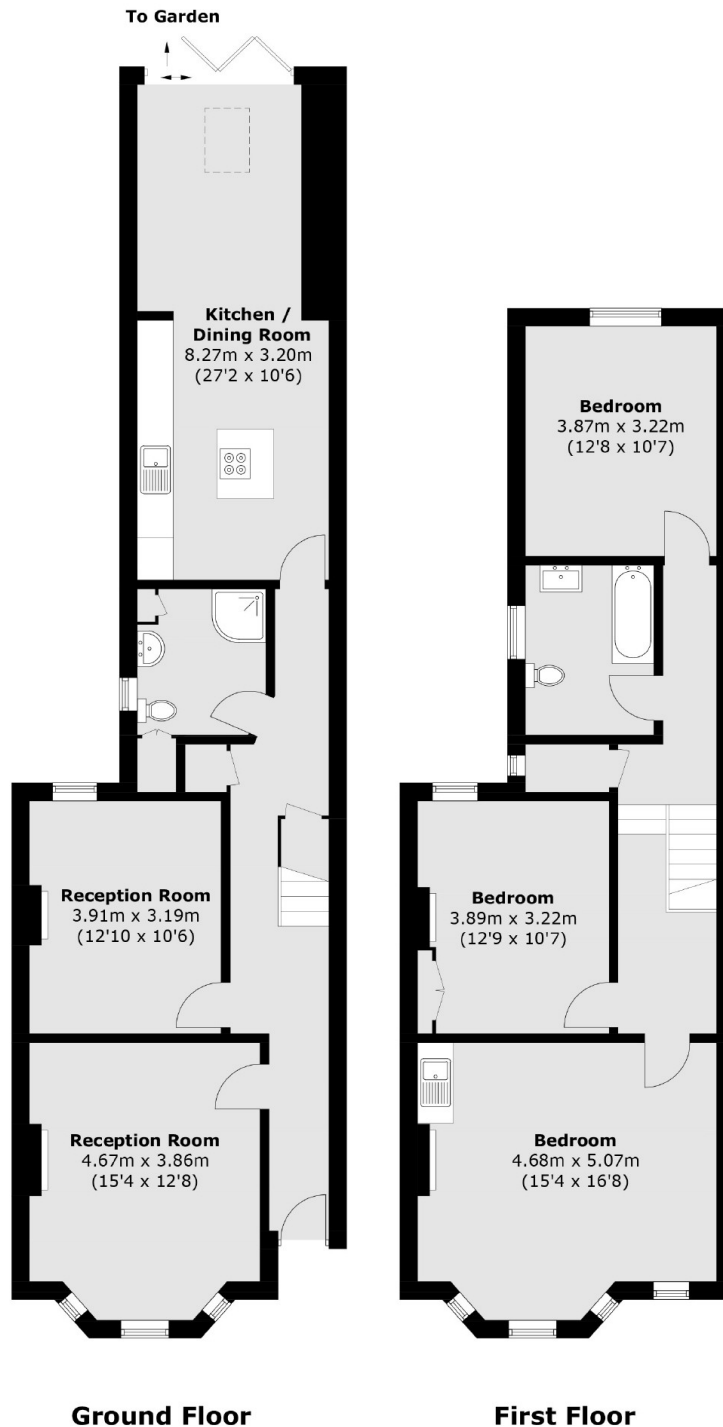
A three double bedroom family home with period features throughout. There are two reception rooms, a modern fitted kitchen and two bathrooms. There is access to a large private garden. The property comes with scope to convert the loft and extend on the side (STPP).

Mora Road is a quiet residential street close to Cricklewood Broadway and its variety of local delis, restaurants, cafés. It is close to Cricklewood Station (Thameslink) and 24 hour bus services.

### Features

- Three Bedrooms
- Two Reception Rooms
- Freehold
- Potential to Extend (STPP)
- Large Garden
- Victorian Conversion

# Mora Road, London, NW2



Total area (approx.): 144.5 sq. m (1,555.3 sq. ft)