



## Chichele Road, NW2

### £500,000

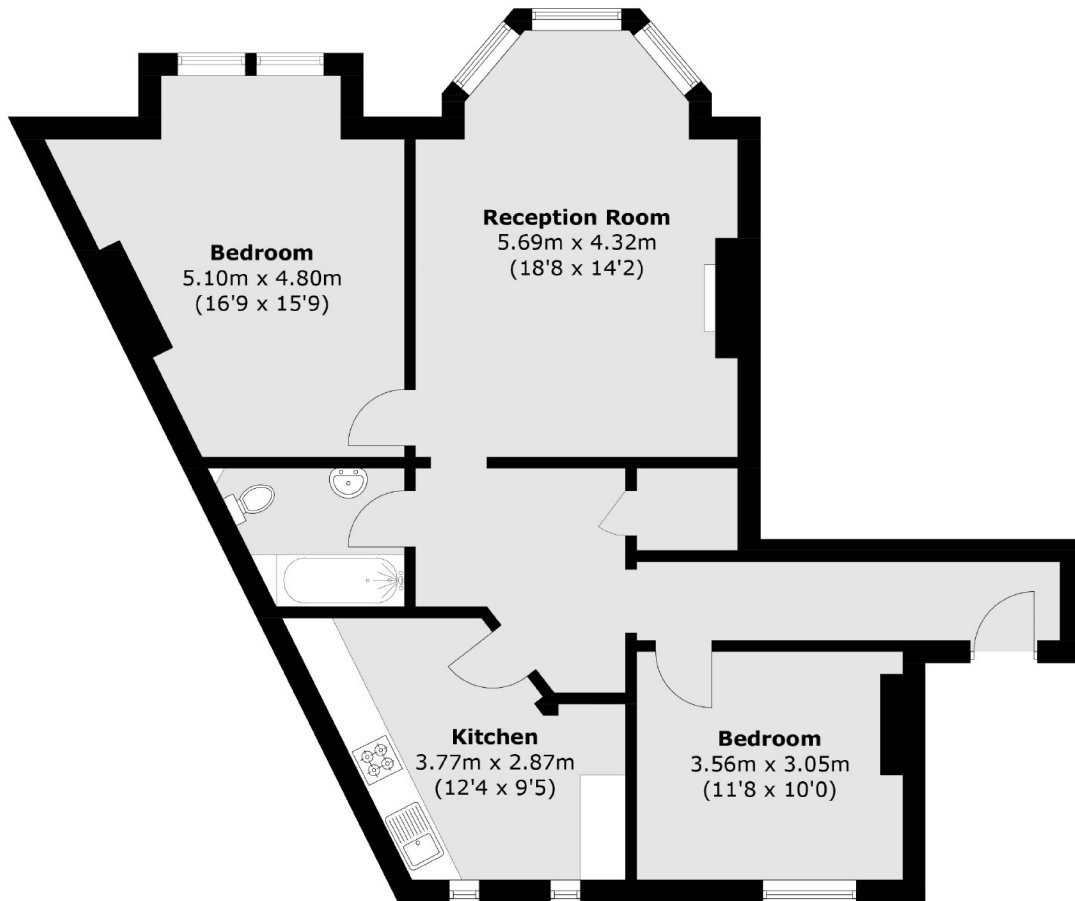
A spacious lateral first floor two bedroom period mansion block apartment measuring in excess of 900 sq.ft. This property offers a separate kitchen, reception room and bathroom. The property also comes with access to communal gardens.

Chichele Road is ideally located with Willesden Green underground station (Jubilee Line) positioned 0.3 miles away and with Cricklewood Thameslink station 0.4 miles away offering quick connection to St Pancras International.

### Features

- First Floor
- Two Bedrooms
- Separate Kitchen
- Over 900 Sq.Ft
- Communal Gardens
- Period Mansion Block

# Chichele Road, London, NW2



Total area (approx.): 84.7 sq. m (911.7 sq. ft)