



## Greenfield Gardens, NW2

### £800,000

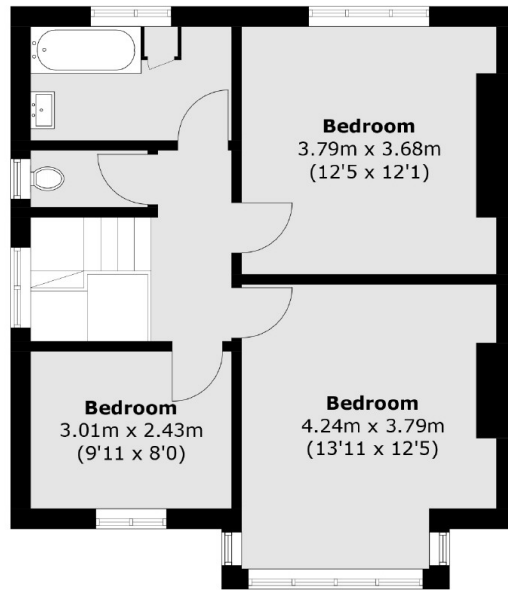
This characterful, unmodernised, freehold house offers three double bedrooms and a large south west facing garden. There is potential to add significant value, which can be done through modernisation and various extensions subject to planning permission, all while creating a bespoke home.

Greenfield Gardens is ideally located between Golders Green and Hampstead in the residential area of Childs Hill. Golders Green and the local Thameslink are within walking distance providing a wide range of transport, shops and amenities.

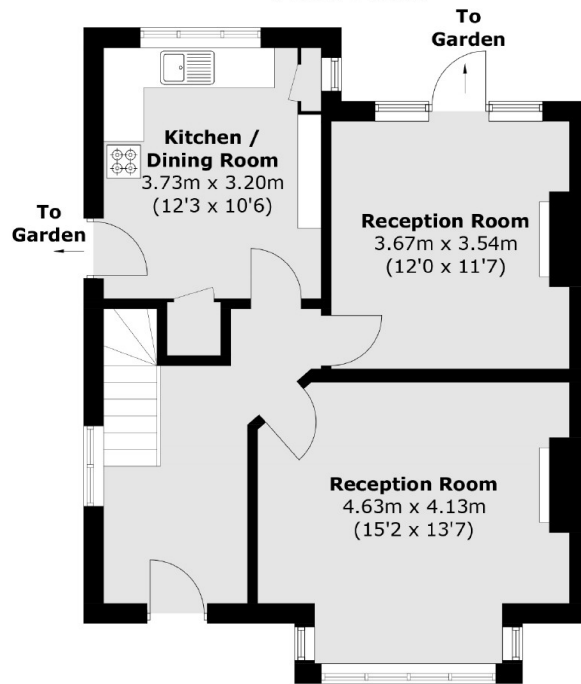
### Features

- Semi Detached
- South West Facing Garden
- Original features
- Unmodernised
- First Marketed In Over 60 Years
- Potential To Add Major Value

# Greenfield Gardens, London, NW2



**First Floor**



**Ground Floor**

Total area (approx.): 109.1 sq. m (1,174.4 sq. ft)