



Wilkinson Close, NW2

£450,000

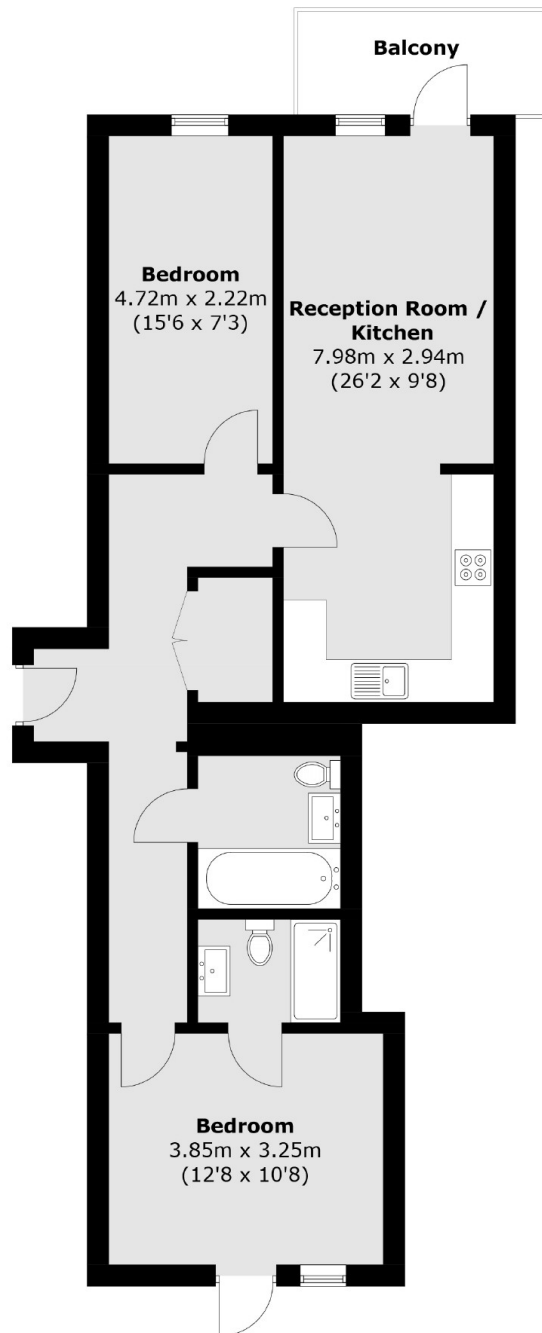
Situated on the first floor of a modern development, this flat offers close to 800 sq.ft of living space with two double bedrooms, two bathrooms (one of which is an en suite) a winter garden accessed via the open plan living area and a private terrace. The property further benefits from access to a residents gym and underground parking.

Collins Building is within the Fellows Square development and is a short distance from the new Brent Cross West station (Thameslink), Brent Cross Shopping Centre and multiple road connections (A406, A41, M1).

Features

- Two Double Bedrooms
- Two Bathrooms
- Winter Garden and Terrace
- Allocated Parking
- Brent Cross West Station
- No Onward Chain

Wilkinson Close, London, NW2



Total area (approx.): 72.3 sq. m (778.2 sq. ft)
Balcony: 5.1 sq. m (54.9 sq. ft)