



Flowers Close, NW2

£425,000

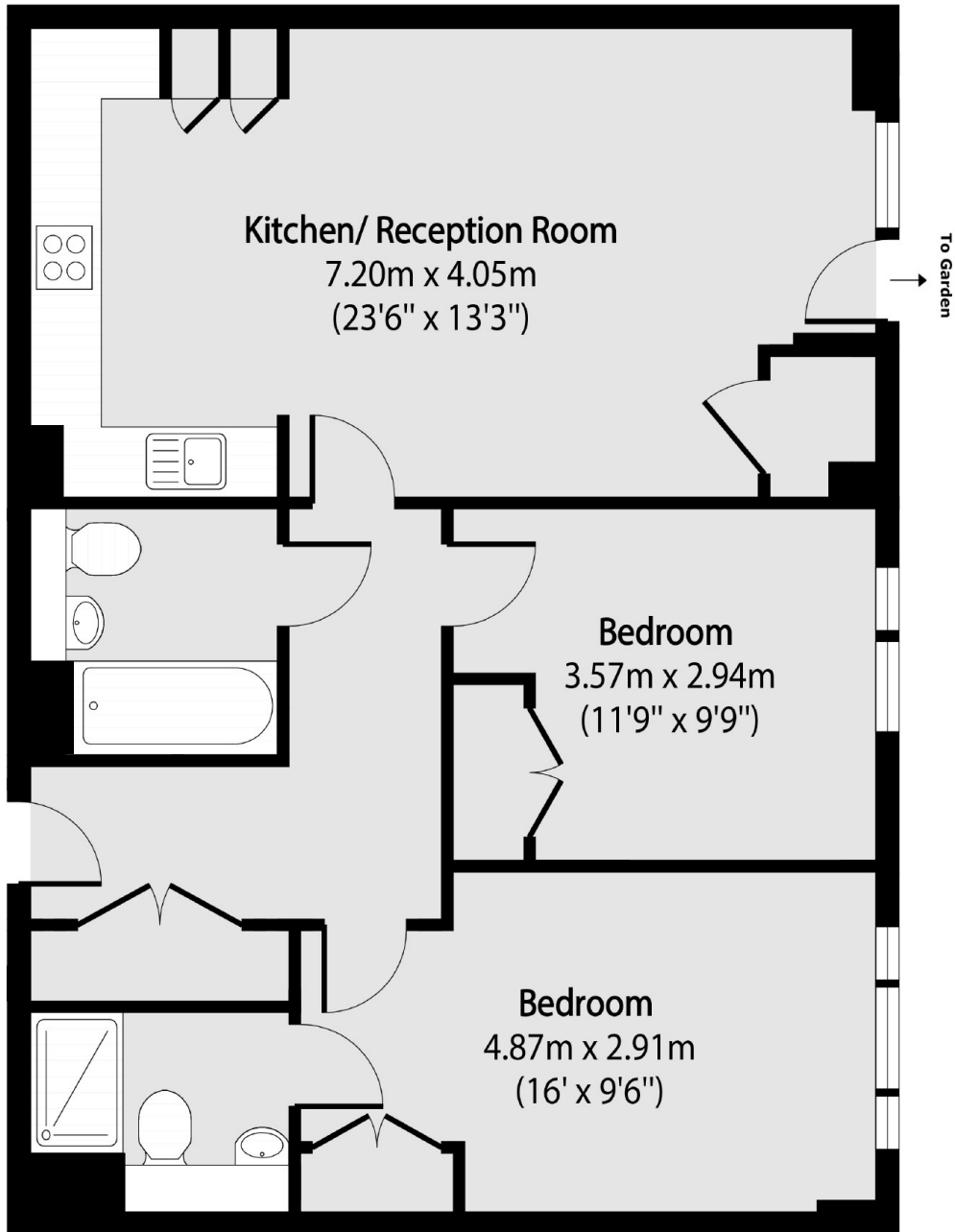
Situated on the ground floor of a modern purpose built development is this two double bedroom, two bathroom (one en suite) flat with allocated parking and a large private garden. The property benefits from an open plan living area with well equipped kitchen, ample storage throughout and comes with no onward chain.

Flowers Close is moments away from the ever-popular Gladstone Park and the variety of amenities of Dollis Hill and Brent Cross West. There are also great transport links into the City including the A406 and the M1.

Features

- Two Bedrooms
- Two Bathrooms
- No Onward Chain
- Ground Floor
- Private Garden
- Allocated Parking

Flowers Close, London, NW2



Total area (approx): 72.13 sq m (776 sq. ft)