



Prayle Grove, NW2

£500,000

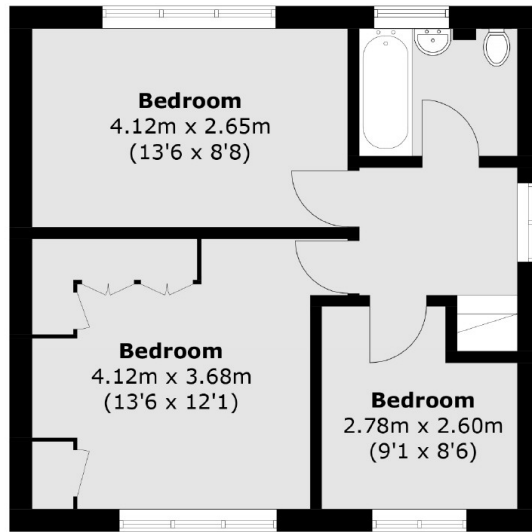
A three bedroom semi-detached family home, with a double reception room, fitted kitchen and utility area, main bathroom and separate WC. The property comes with access to a private garden and benefit's from no onward chain.

Prayle Grove is ideally located with easy access to Brent Cross station (Northern Line) as well as Golders Green and Cricklewood with both their underground and overground stations, numerous shops, cafés and restaurants. Road connections include the A40, A406 and the M1 motorway.

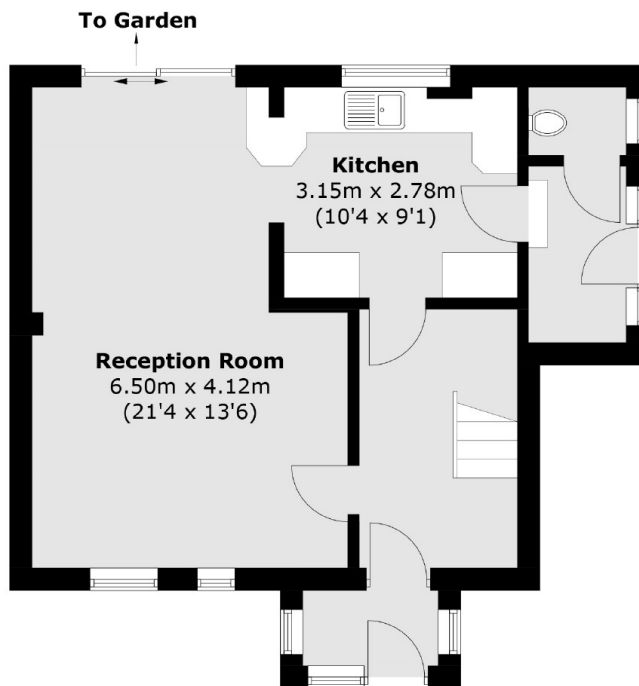
Features

- Three Bedrooms
- Family Bathroom And WC
- Double Reception Room
- Kitchen And Utility Area
- Private Garden
- No Onward Chain

Prayle Grove, London, NW2



First Floor



Ground Floor

Total area (approx.): 90.4 sq. m (973 sq. ft)