



Christchurch Avenue, NW6

£395 Per week

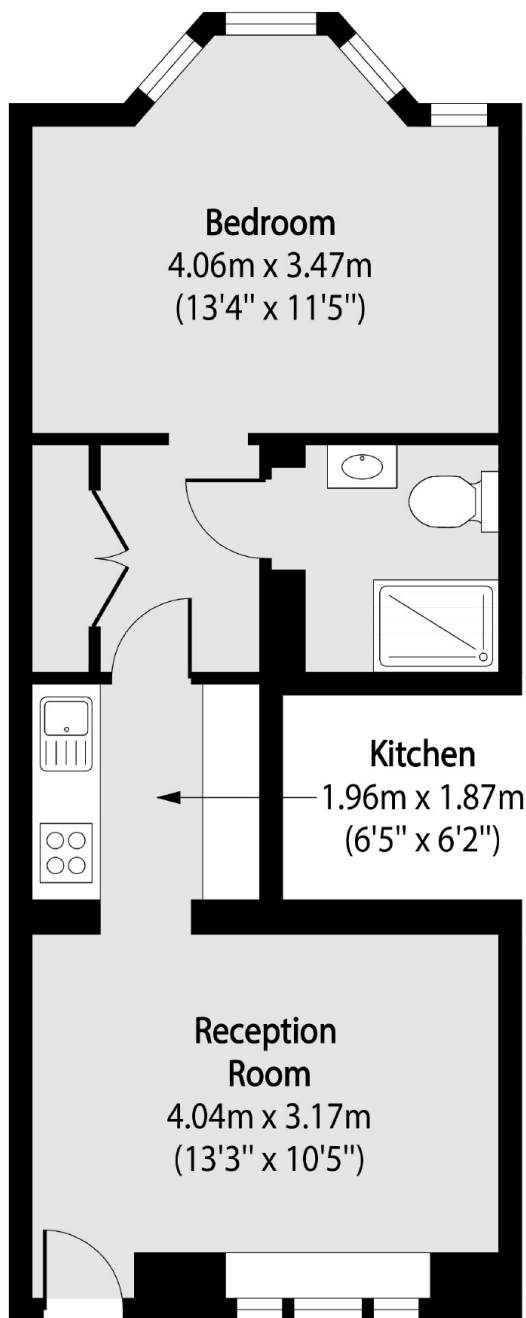
This newly renovated one bedroom lower ground floor maisonette is ideally situated close to local transport and amenities. With its own private entrance, the property has fitted kitchen, separate reception room, modern tiled shower room and a well sized double bedroom with great storage.

Christchurch Avenue is close to the trendy shops and bars of Kilburn High Road, the cafés and restaurants of Salusbury Road and is within easy reach of Kilburn Station (Jubilee Line) and Brondesbury Station (Overground) offering excellent access to the City.

Features

- One Bedroom
- Newly Renovated
- Lower Ground Floor
- Private Entrance
- Separate Kitchen
- Ideally Situated

Christchurch Avenue, London, NW6



Total area (approx): 37.48 sq m (403 sq. ft)