



## Chichele Road, NW2

£695,000

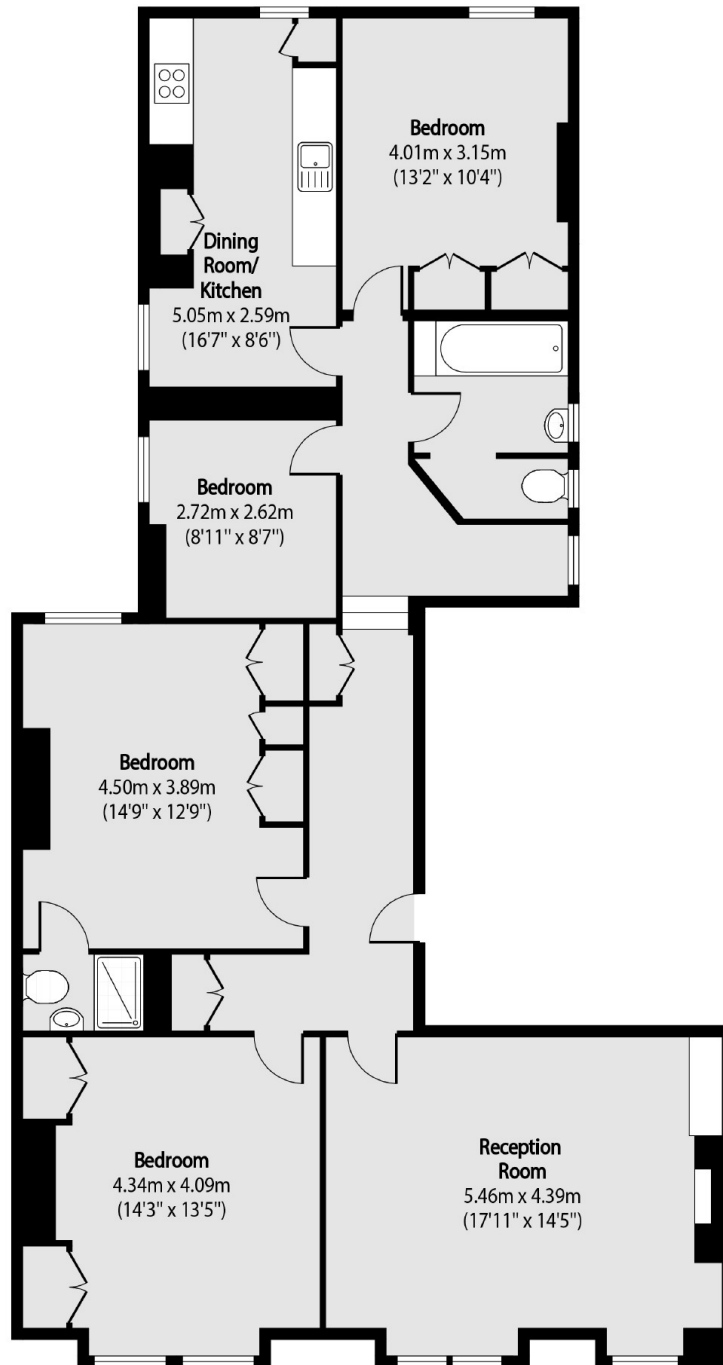
A spacious top floor four bedroom period mansion block apartment measuring in excess of 1,250 sq.ft. With an eat-in kitchen, separate reception room, main bathroom and shower room en suite. The property also comes with access to communal gardens.

Chichele Road is ideally located with Willesden Green underground station (Jubilee Line) positioned 0.3 miles away and with Cricklewood Thameslink station 0.4 miles away offering quick connection to St Pancras International.

### Features

- Top Floor
- Four Bedrooms
- Eat-In Kitchen
- Two Bathrooms
- Communal Gardens
- Period Mansion Block

Chichele Road,  
London, NW2



Total area (approx): 119.66 sq m (1288 sq. ft)