



## Gresham Road, NW10

£379,950

Recently renovated throughout, this first floor maisonette offers three bedrooms, one bathroom and a bright open plan living area with well-fitted kitchen. The flat benefits from a generously sized private garden and comes with potential to convert the loft (STPP) and no onward chain.

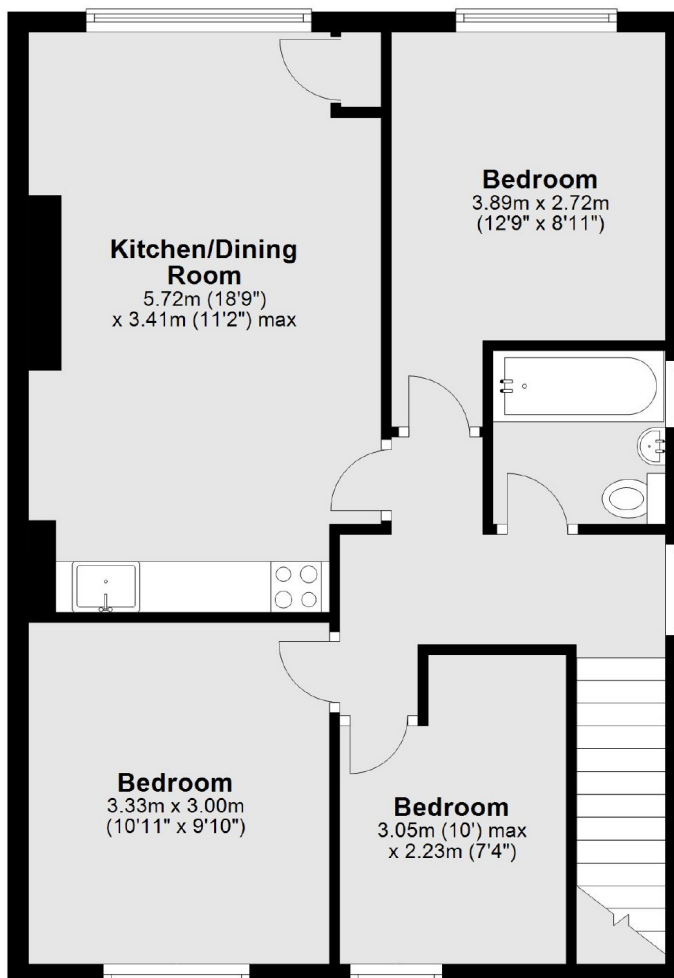
Gresham Road is ideally located just 0.4 miles from Ikea and Tesco Extra and just 0.6 miles from Neasden station (Jubilee line Zone 3). A variety of amenities such as retail shops, restaurants and other entertainment facilities can be found at Wembley just 10 minutes away.

### Features

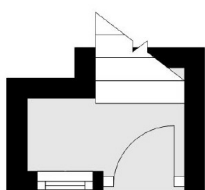
- Three Bedrooms
- One Bathroom
- Great Condition
- Private Garden
- No Onward Chain
- Potential To Convert The Loft

# Gresham Road, London, NW10

## First Floor



## Ground Floor



Total area: approx. 59.1 sq. metres (636.1 sq. feet)