



## Shoot Up Hill, NW2

£379,999

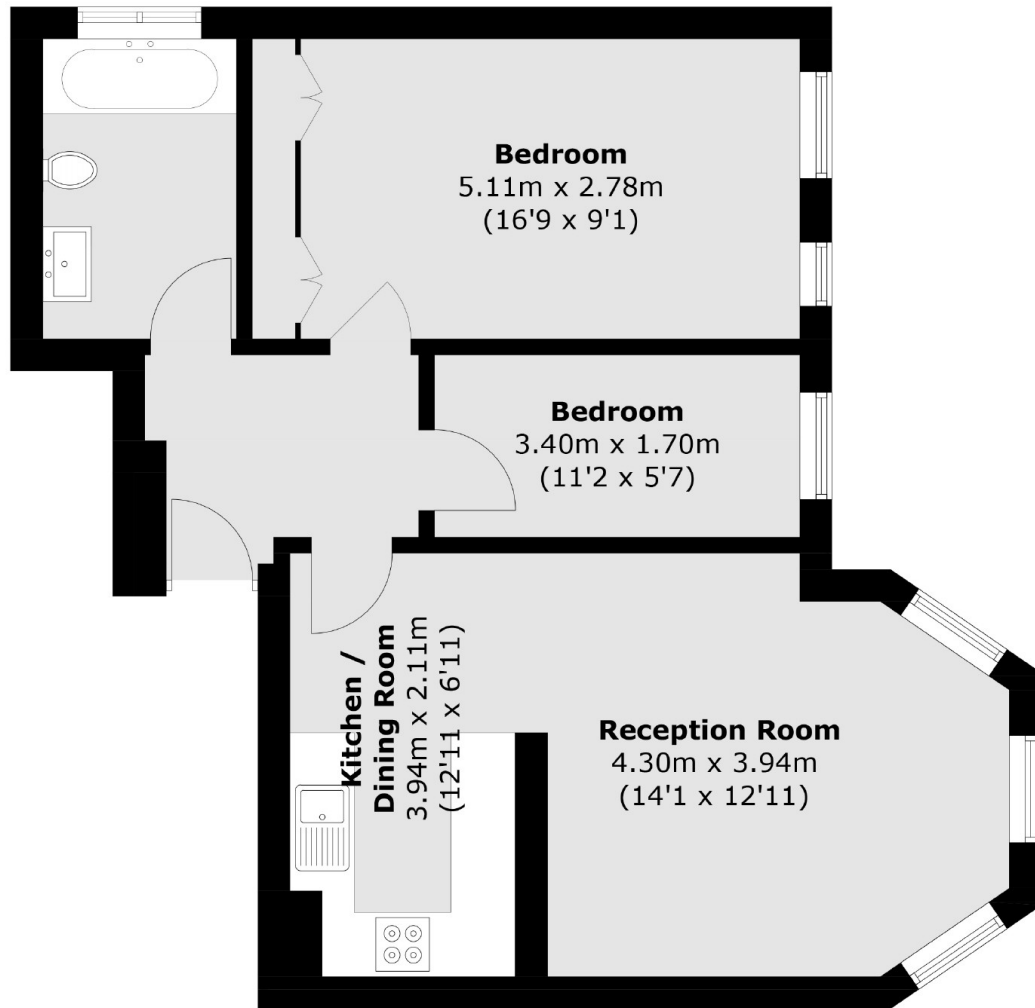
A sought after two bedroom first floor period conversion. With an open plan living area, modern bathroom and access to communal gardens, the property comes with access to off-street parking, a long lease and no onward chain

Shoot Up Hill is located a short distance from Cricklewood Broadway and its variety of amenities such as gym, shops and cafes. Kilburn (Jubilee Line Zone 2) station is also very close by. West Hampstead is easily accessible.

### Features

- Period Conversion
- Two Bedrooms
- Open Plan Living Area
- Modern Bathroom
- Communal Gardens
- Off-Street Parking

# Shoot Up Hill, London, NW2



Total area (approx.): 56.6 sq. m (609.2 sq. ft)