



Mapesbury Road, NW2

£650,000

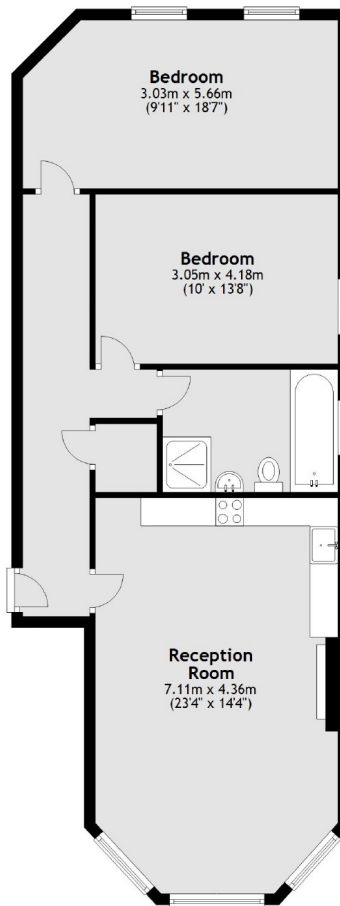
A two double bedroom first floor period conversion fully renovated to a high specification throughout. With a light and spacious open plan living area with well fitted kitchen and modern bathroom with separate shower. The property comes with potential to convert the ample loft space or create a separate unit, subject to the usual permissions, and no onward chain.

Mapesbury Road is just 0.3 miles from the Mapesbury Dell as well as Kilburn underground station (Jubilee Line Zone 2) and Brondesbury station (Overground). The ever-popular West Hampstead and its variety of shops is a short distance away.

Features

- Period Conversion
- Fully Renovated
- Two Double Bedrooms
- Open Plan Living Area
- Extension Potential (STPP)
- No Onward Chain

Mapesbury Road, London, NW2



Total area: approx. 80.3 sq. metres (864.6 sq. feet)