



Shoot Up Hill, NW2

£400,000

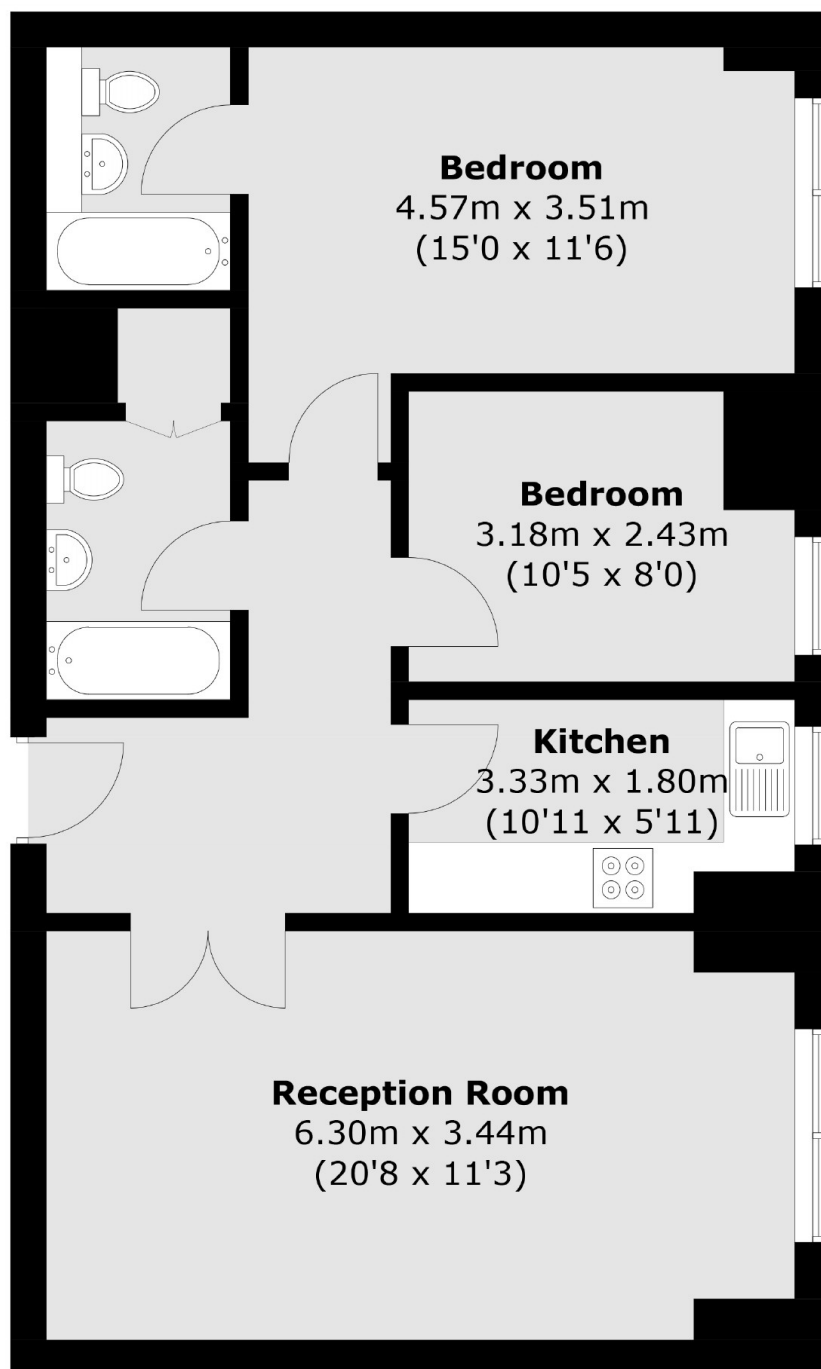
****CASH BUYERS ONLY**** This two bedroom, two bathroom ground floor flat is well located in this portered development with access to a residents gym and swimming pool. You also have well maintained communal grounds and an allocated parking space.

Shoot Up Hill is ideally situated with West Hampstead and Brondesbury Park nearby. Kilburn underground and Brondesbury Overground stations are also on your doorstep along with many local amenities ,cafés and restaurants.

Features

- Two Bedrooms
- Gated Allocated Parking
- Private Residents Gym
- Private Residents Pool
- 24 Hour Porter
- No Onward Chain

Shoot Up Hill, London, NW2



Total area (approx.): 68.8 sq. m (740.6 sq. ft)