



Prout Grove, NW10

£450,000

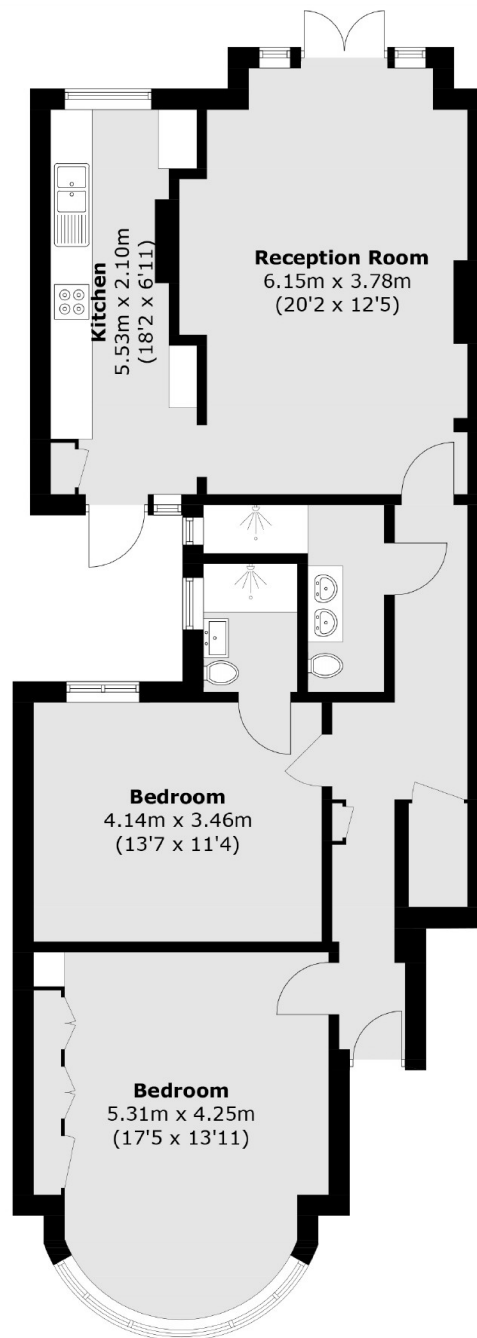
A two double bedroom, two bathroom, ground floor period conversion measuring in excess of 950 sqft. With a large reception room, separate kitchen, patio and garden. The property comes with a share of the freehold and no onward chain.

Prout Grove is just 0.2 miles from Neasden Station (Jubilee Line Zone 3) and has easy access to Wembley, the A406 North Circular as well as a range of shops found at Neasden Parade.

Features

- Ground Floor
- Two Double Bedrooms
- Two Bathrooms
- Patio And Garden
- Share Of Freehold
- No Onward Chain

Prout Grove, London, NW10



Ground Floor

Total area (approx.): 89.9 sq. m (967.7 sq. ft)