



Gratton Terrace, NW2

£700,000

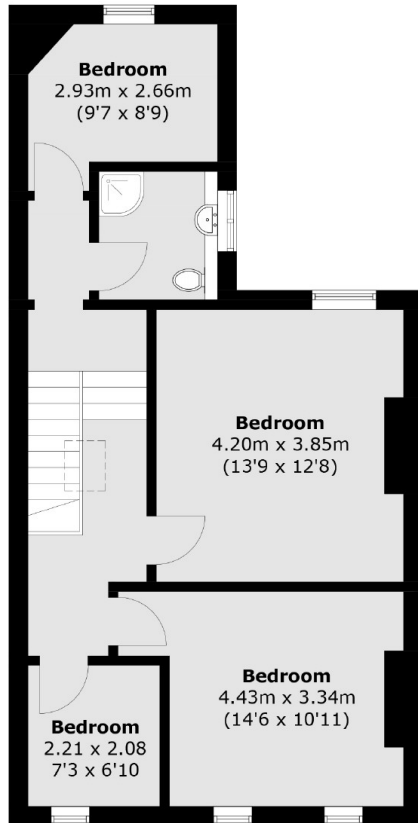
This terraced house is located in the conservation area, nestled behind Cricklewood Broadway and offers four bedrooms, a large double reception room and a separate kitchen leading to a private garden. The house has incredible high ceilings throughout and has the potential to extend (STPP).

Gratton Terrace is a quiet residential street part of the Welcoming Residents Association. It is just 0.4 miles from Cricklewood Broadway and its array of cafes, shops & supermarkets as well as great transport links including Cricklewood Station (Thameslink), road links and numerous bus routes.

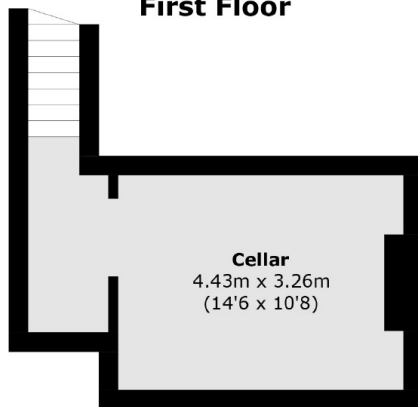
Features

- Four Bedrooms
- High Ceilings
- In Need of Modernisation
- Close to Transport
- Private Garden
- Freehold

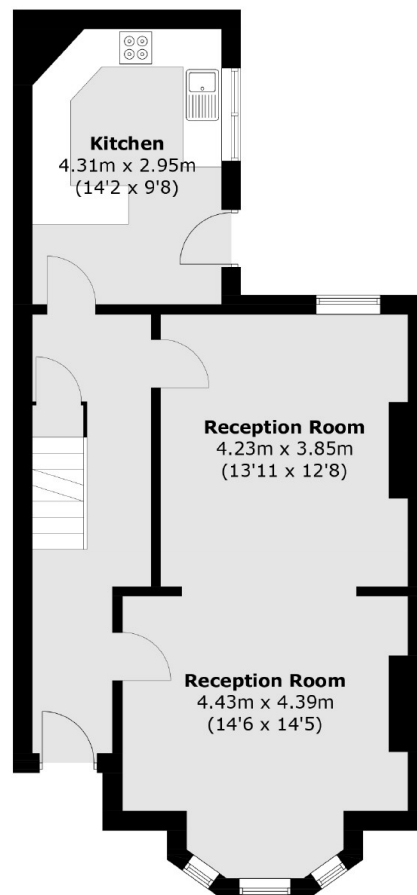
Gratton Terrace, London, NW2



First Floor



Cellar



Ground Floor

Total area (approx.): 137.9 sq. m (1,484.4 sq. ft)