



Oman Avenue, NW2

£450,000

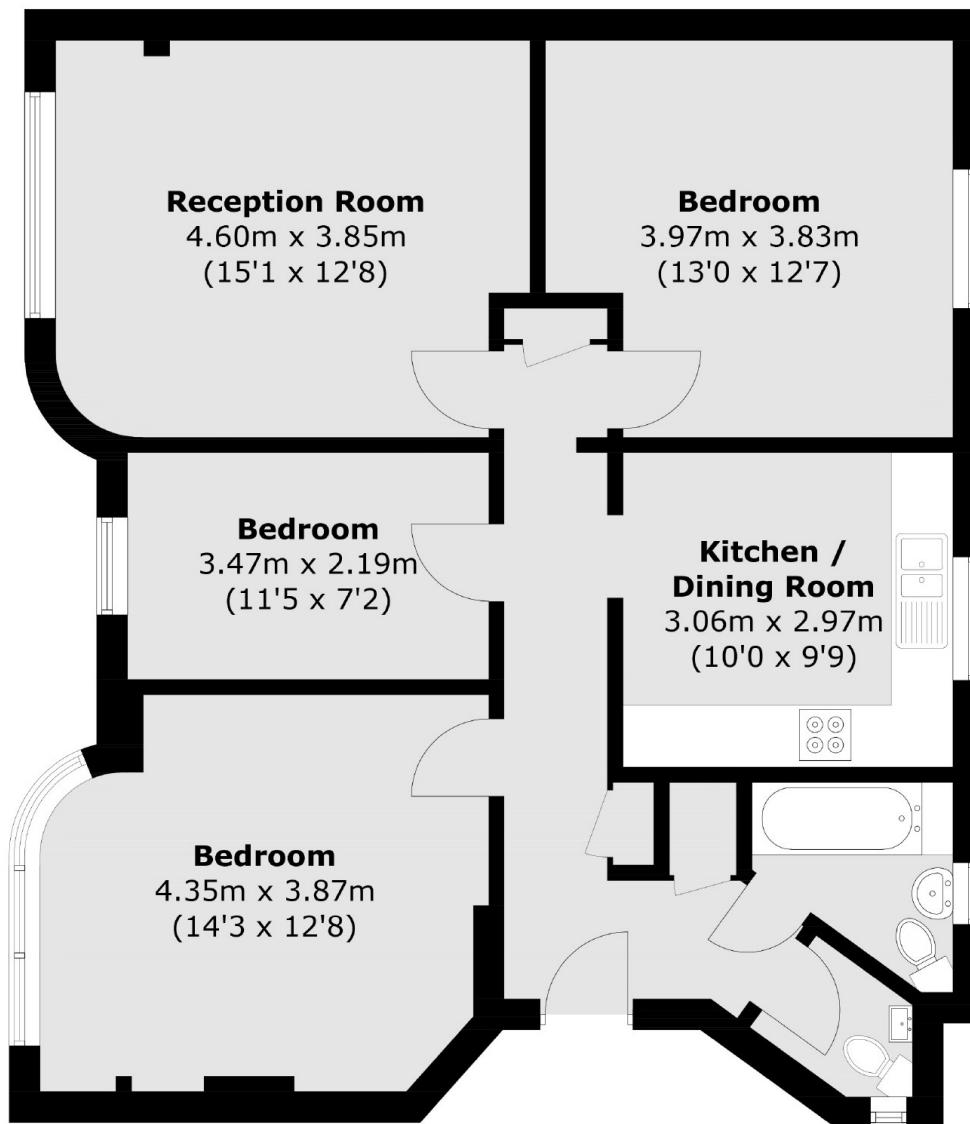
Situated on the second floor of a well-maintained purpose built building, is this three bedroom flat with a separate kitchen and reception with parquet flooring. Offering great internal living space and beautiful views of Gladstone Park this is perfect as a first time buy or as an investment.

Oman Avenue is situated alongside the 86 acres of green open spaces of Gladstone Park. Both Dollis Hill & Willesden Green Stations (Jubilee line) are nearby as well as the vast range of amenities of Walm Lane & Cricklewood Broadway.

Features

- Three Bedrooms
- Separate Reception
- Views of Gladstone Park
- Chain Free
- Off Street Parking
- Communal Gardens

Oman Avenue, London, NW2



Second Floor

Total area (approx.): 83.6 sq. m (899.9 sq. ft)