

## Ashford Road, NW2

£426 Per week

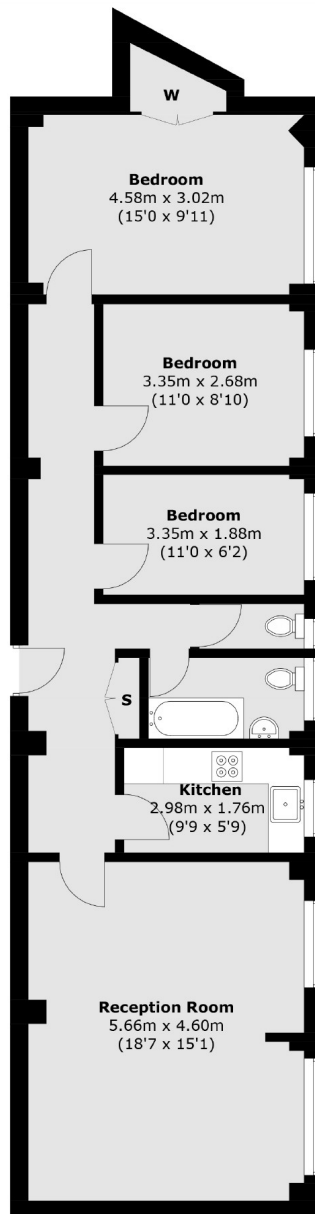
This well presented three bed ground floor flat is situated in this portered purpose built block in the heart of Cricklewood. The property has a double reception room, separate fitted kitchen, tiled bathroom and separate WC.

Ashford Road is well located close to the shops and restaurants of Willesden Green and Cricklewood Broadway. You also have good transport links to the city and easy motorway access. Willesden Green station and Cricklewood Thameslink are also near.

### Features

- Three Bedrooms
- Double Reception
- Separate Kitchen
- Communal Grounds
- Lift Access
- 24hr Porter

## Ashford Road, London, NW2



### Ground Floor

Total area (approx.): 84.7 sq. m (911.7 sq. ft)

### Contact

To arrange a viewing call our office on the number below or visit our website.



Energy Rating: D. We aim to make our particulars both accurate and reliable. However they are not guaranteed; nor do they form part of an offer or contract. If you require clarification on any points then please contact us, especially if you're traveling some distance to view. Please note that appliances and heating systems have not been tested and therefore no warranties can be given as to their good working order.