



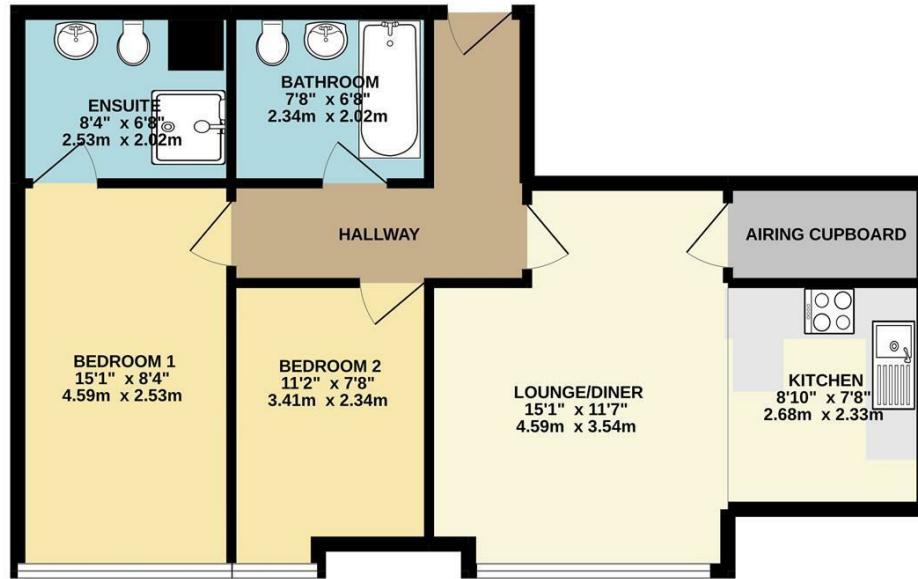
209 ASIA HOUSE
MANCHESTER, M1 6BD

£1,450 PCM

One of Manchester's most popular and stunning Victorian developments situated in the heart of the City Centre, close to Manchester University, Oxford Road and Piccadilly Stations. This second floor corner apartment briefly comprises; spacious open plan living room with high ceilings, large sash windows and original exposed cast iron beams open to a fully fitted kitchen, two double bedrooms the master bedroom being en-suite and a modern bathroom. Furnished. Available 10th of September 2024

buckleyfrayne

GROUND FLOOR
634 sq.ft. (58.9 sq.m.) approx.



TOTAL FLOOR AREA: 634 sq.ft. (58.9 sq.m.) approx.
Whilst every attempt has been made to ensure the accuracy of the floorplan contained here, measurements of doors, windows, rooms and any other items are approximate and no responsibility is taken for any error, omission or mis-statement. This plan is for illustrative purposes only and should be used as such by any prospective purchaser. The services, systems and appliances shown have not been tested and no guarantee as to their operability or efficiency can be given.
Made with Metropix ©2022.



Energy Efficiency Rating		
	Current	Potential
Very energy efficient - lower running costs		
(92 plus) A		
(81-91) B		
(69-80) C		76
(55-68) D	59	
(39-54) E		
(21-38) F		
(1-20) G		
Not energy efficient - higher running costs		
England & Wales	EU Directive 2002/91/EC	

Agents Note: Whilst every care has been taken to prepare these particulars, they are for guidance purposes only. All measurements are approximate and are for general guidance purposes only and whilst every care has been taken to ensure their accuracy, they should not be relied upon and potential buyers/tenants are advised to recheck the measurements

Manchester Office Lettings
6-14 Great Ancoats Street
Northern Quarter
Manchester
M4 5AZ

0161 236 0004
mark.buckley@buckleyfrayne.co.uk
www.buckleyfrayne.co.uk

buckleyfrayne