

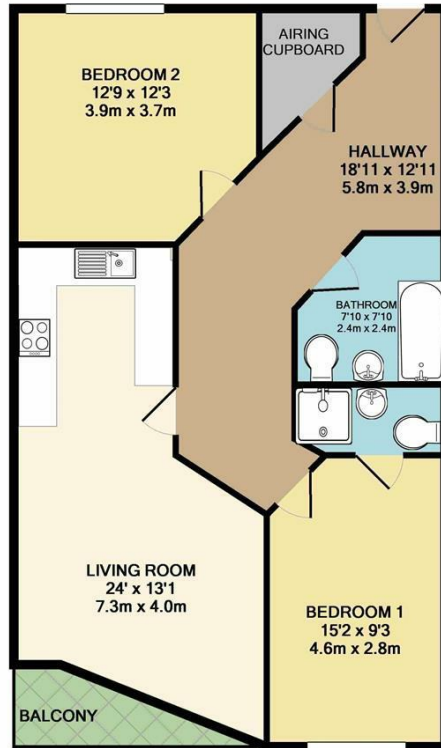


**11 SOUTHPOINT 12 LANE END ROAD
MANCHESTER, M19 1TP**

£1,100 PCM

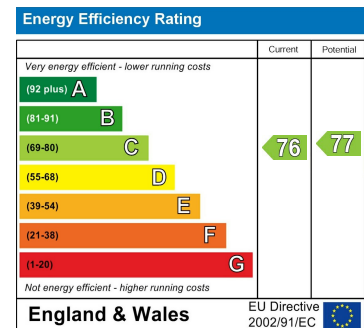
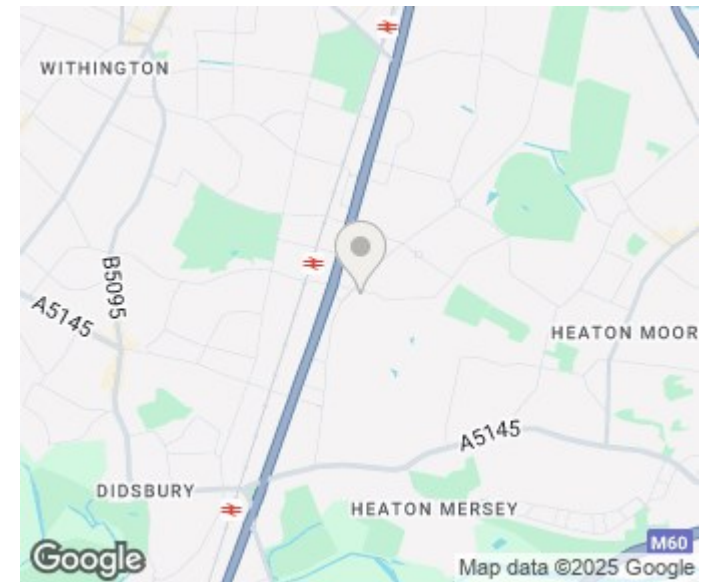
Available from 6th November 2025, this newly redecorated and fully furnished top-floor apartment is ideally located in the popular Burnage area of Manchester. Just a minute's walk from the local Tesco Superstore and with excellent access to the A34 Kingsway, M56, M60, and Manchester Airport, convenience is guaranteed. The heart of Didsbury Village is only a 5-minute drive away. The apartment features an entrance hall, spacious living room open to a luxury fitted kitchen, two double bedrooms, a luxury main bathroom, and an en-suite to the master bedroom. Additional benefits include a balcony and secure parking to the rear. Finished to a very high standard, this property offers stylish and comfortable living in a sought-after location.

buckleyfrayne



TOTAL APPROX. FLOOR AREA 826 SQ.FT. (76.7 SQ.M.)

Whilst every attempt has been made to ensure the accuracy of the floor plan contained here, measurements of doors, windows, rooms and any other items are approximate and no responsibility is taken for any error, omission, or mis-statement. This plan is for illustrative purposes only and should be used as such by any prospective purchaser. The services, systems and appliances shown have not been tested and no guarantee as to their operability or efficiency can be given
Made with Metropix ©2018



Agents Note: Whilst every care has been taken to prepare these particulars, they are for guidance purposes only. All measurements are approximate and are for general guidance purposes only and whilst every care has been taken to ensure their accuracy, they should not be relied upon and potential buyers/tenants are advised to recheck the measurements

Manchester Office Lettings
6-14 Great Ancoats Street
Northern Quarter
Manchester
M4 5AZ

0161 236 0004
mark.buckley@buckleyfrayne.co.uk
www.buckleyfrayne.co.uk

buckleyfrayne