

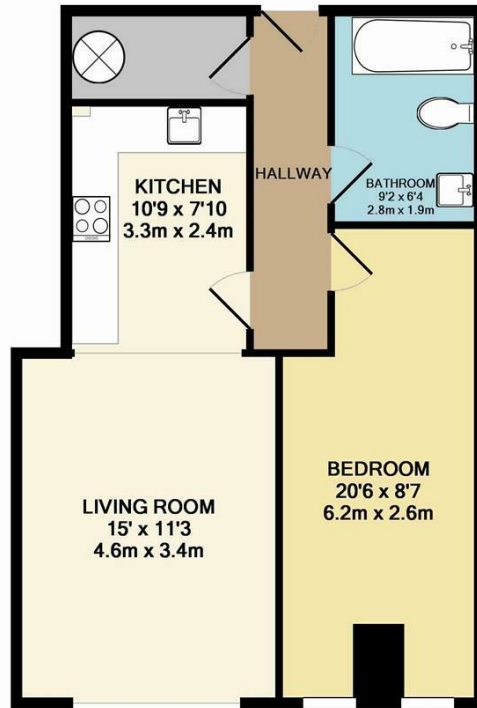


**12 OPHTHALMIC WORKS 2 NAPLES STREET  
GREATER MANCHESTER, M4 4DB**

**£1,100 PCM**

A stunning classic mill conversion on the second floor of this popular development. This attractive property has new oak flooring, granite working surfaces and fully furnished to a high standard. A spacious living room open to a large fitted kitchen. A large open bedroom, modern bathroom with shower. Secure allocated underground parking space. Available 10th of October 2024.

**buckleyfrayne**



TOTAL APPROX. FLOOR AREA 550 SQ.FT. (51.1 SQ.M.)

Whilst every attempt has been made to ensure the accuracy of the floor plan contained here, measurements of doors, windows, rooms and any other items are approximate and no responsibility is taken for any error, omission, or mis-statement. This plan is for illustrative purposes only and should be used as such by any prospective purchaser. The services, systems and appliances shown have not been tested and no guarantee as to their operability or efficiency can be given  
 Made with Metropix ©2014



Energy Efficiency Rating		
	Current	Potential
Very energy efficient - lower running costs		
(92 plus) <b>A</b>		
(81-91) <b>B</b>		<b>83</b>
(69-80) <b>C</b>	<b>72</b>	
(55-68) <b>D</b>		
(39-54) <b>E</b>		
(21-38) <b>F</b>		
(1-20) <b>G</b>		
Not energy efficient - higher running costs		
<b>England &amp; Wales</b>	EU Directive 2002/91/EC	

Agents Note: Whilst every care has been taken to prepare these particulars, they are for guidance purposes only. All measurements are approximate and are for general guidance purposes only and whilst every care has been taken to ensure their accuracy, they should not be relied upon and potential buyers/tenants are advised to recheck the measurements

Manchester Office Lettings  
 6-14 Great Ancoats Street  
 Northern Quarter  
 Manchester  
 M4 5AZ

0161 236 0004  
 mark.buckley@buckleyfrayne.co.uk  
 www.buckleyfrayne.co.uk

**buckleyfrayne**