

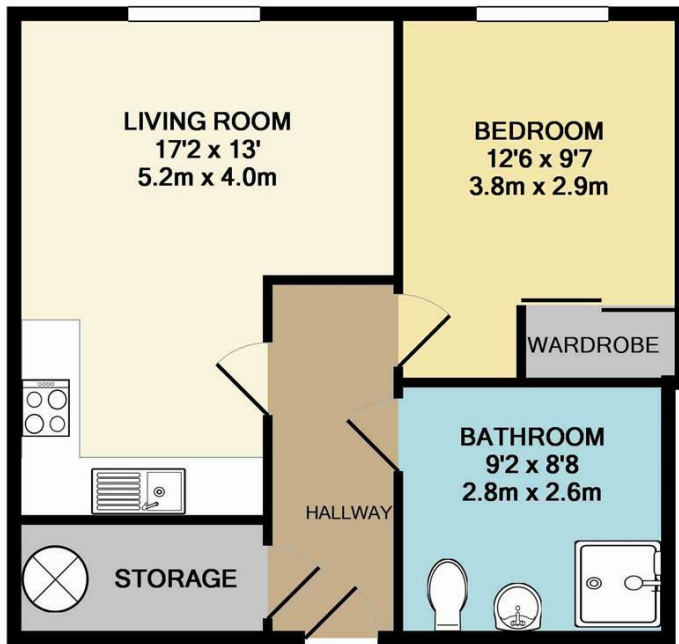


## 62 THE BOULEVARD MANCHESTER, M20 2EU

£995 PCM

Recently redecorated and furnished. Located in the very popular West Didsbury and only a two minute walk from the local Metro Station. Easy access to the A34 Princess Parkway which leads to the M56 and Manchester Airport. An immaculate larger than average one bedroom apartment on the ground floor of this popular secure development. Spacious living room open to a luxury fitted kitchen, fantastic bedroom with a large fitted wardrobe, three piece shower room with walk in shower. A secure parking space. Fully furnished to a high standard. Available 14th August 2024.

**buckleyfrayne**



TOTAL APPROX. FLOOR AREA 475 SQ.FT. (44.1 SQ.M.)

Whilst every attempt has been made to ensure the accuracy of the floor plan contained here, measurements of doors, windows, rooms and any other items are approximate and no responsibility is taken for any error, omission, or mis-statement. This plan is for illustrative purposes only and should be used as such by any prospective purchaser. The services, systems and appliances shown have not been tested and no guarantee as to their operability or efficiency can be given  
Made with Metropix ©2015



Energy Efficiency Rating		Current	Potential
Very energy efficient - lower running costs			
(92 plus) A			87
(81-91) B		76	
(69-80) C			
(55-68) D			
(39-54) E			
(21-38) F			
(1-20) G			
Not energy efficient - higher running costs			
<b>England &amp; Wales</b>		EU Directive 2002/91/EC	

Agents Note: Whilst every care has been taken to prepare these particulars, they are for guidance purposes only. All measurements are approximate and are for general guidance purposes only and whilst every care has been taken to ensure their accuracy, they should not be relied upon and potential buyers/tenants are advised to recheck the measurements

Manchester Office Lettings  
6-14 Great Ancoats Street  
Northern Quarter  
Manchester  
M4 5AZ

0161 236 0004  
mark.buckley@buckleyfrayne.co.uk  
www.buckleyfrayne.co.uk

**buckleyfrayne**