



Well presented first floor flat conveniently located for a range of facilities and the sea front.
Open plan living room/kitchen, double bedroom, bathroom.
Tenure: Freehold. Council Tax Band: A EPC: C

£115,000

01626 862379

www.fraserandwheeler.co.uk

FRASER & WHEELER

Location

The property is well located just half a mile from the town centre which offers a range of shops and cafes. Teignmouth is a popular seaside town on the South Devon coast served by the South West train line making it easily accessible. It is best known for its long sandy beach and Victorian Pier and is the ideal location for a range of water sports and fishing. The town offers a variety of independent and national chain shops, pubs and cafes. On the promenade are tennis courts, play park and Teignmouth Pavilions which hosts a variety of shows and events throughout the year.

Accommodation

The accommodation is fitted with uPVC double glazed windows and gas central heating. The principal rooms have high ceilings and large windows creating a feeling of space and also retain some period features such as picture rails cornice ceilings.

Entry is to the communal entrance hall and a front door opens to the open plan living space. A large bay window to the front allows light to flood in and there is shelving in an alcove one side of the chimney breast. The kitchen is fitted with a range of modern base and wall units with space for a washing machine and fridge freezer and also includes a built in electric oven and ceramic hob.

The double bedroom has a large window to the rear aspect and is a spacious room with plenty of space for furniture. A door leads to an inner hallway which opens to the communal hall and also to the shower room. Fitted with a modern suite this smart shower room offers a shower enclosure with mains shower, wash hand basin, WC with concealed cistern and a heated towel rail.

Outside

There is a bin storage area to the front.

Tenure

The property is held on a 999 year lease. Maintenance is shared with the owners of the other two flats. There is no regular payment.

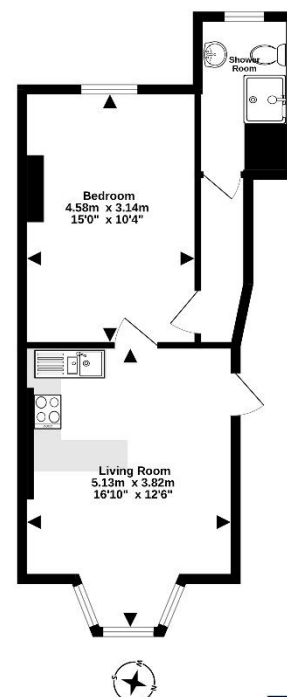
Measurements

Living Room / Kitchen
5.13m x 3.82m (16'10" x 12'6")

Bedroom
4.58m x 3.14m (15'0" x 10'4")



1st Floor
38.0 sq.m. (409 sq.ft.) approx.



TOTAL FLOOR AREA: 38.0 sq.m. (409 sq.ft.) approx.
While every attempt has been made to ensure the accuracy of this floor plan, the dimensions of rooms, windows, doors and any other fittings are approximate and no responsibility is taken for any error, omission or mis-statement. The plan is for illustrative purposes only and should be used as a guide only, prospective purchaser. The services, systems and appliances shown have not been tested and no guarantee is given as to their operability or efficiency and the plan is made with Metreplan 12.0025

FRASER
WHEELER

19 Queen Street, Dawlish, Devon, EX7 9HB
Telephone: 01626 862379
Email: info@fraserandwheeler.co.uk
www.fraserandwheeler.co.uk



Fraser & Wheeler has not tested any apparatus, equipment fixtures and fittings or any services and cannot verify that they are in working order or fit for purpose. Prospective purchasers are advised to obtain their own independent reports from relevant professionals such as a surveyor or solicitor. Fraser & Wheeler advises buyers to make their own enquiries as to the tenure. All measurements and room descriptions are for general guide purposes only and buyers should verify information provided before purchasing furniture, fittings, carpets or appliances.