

Barton Villas, **Dawlish**, EX7 9QJ

A ground floor 1 double bedroom apartment situated in a popular level location on the town outskirts. The property benefits from an allocated parking space, gas central heating, uPVC double glazed windows and no onward chain.

LEASEHOLD, COUNCIL TAX BAND - A, EPC - D.

£119,950

01626 862379

www.fraserandwheeler.co.uk

FRASER & WHEELER

FRONT DOOR TO

ENTRANCE HALL

Doors to:

KITCHEN

Modern matching base and eye level units with work surfaces over, electric hob with oven below and extractor hood over, stainless steel sink, wall mounted central heating boiler and window to the side.

SITTING/DINING ROOM

A spacious room with radiator, uPVC double glazed windows to the front and door to:

BEDROOM

Radiator, uPVC double glazed window to the front, storage shelving and high level window providing natural light to the shower room.

SHOWER ROOM

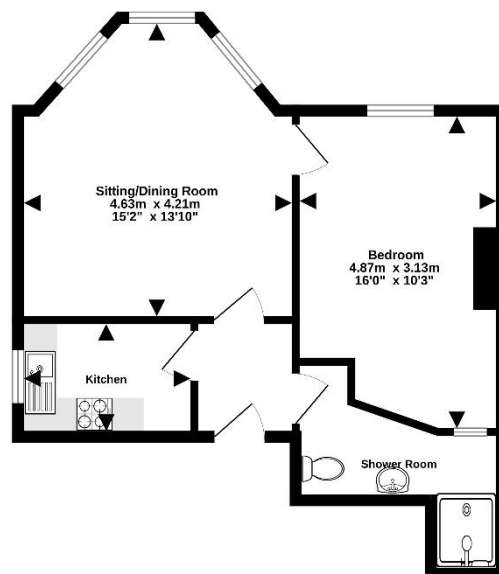
Comprising shower enclosure, WC and pedestal wash hand basin.

OUTSIDE

To the front of the property is an allocated parking space whilst to the rear is an eternal storage area.



Ground Floor
43.5 sq.m. (468 sq.ft.) approx.



TOTAL FLOOR AREA : 43.5 sq.m. (468 sq.ft.) approx.
We have entered this data to the best of our knowledge and belief. It is for guidance only. Measurements of areas, volumes, mass and any other data are approximate and are not intended to be used for any other purpose or as evidence. They are for Fraser & Wheeler's use only and should be used in conjunction with any perspective plan. The surface, system and appliances shown here are not tested and no guarantee is given as to their condition or efficiency over time.
Made with Velux 10214

FRASER
WHEELER



19 Queen Street, Dawlish, Devon, EX7 9HB
Telephone: 01626 862379
Email: info@fraserandwheeler.co.uk
www.fraserandwheeler.co.uk



Fraser & Wheeler has not tested any apparatus, equipment fixtures and fittings or any services and cannot verify that they are in working order or fit for purpose. Prospective purchasers are advised to obtain their own independent reports from relevant professionals such as a surveyor or solicitor. Fraser & Wheeler advises buyers to make their own enquiries as to the tenure. All measurements and room descriptions are for general guide purposes only and buyers should verify information provided before purchasing furniture, fittings, carpets or appliances.