

CASTELLUM APARTMENTS



The Development

“Castellum Apartments is located in a beautiful location close to Aylesbury.”

Castellum Apartments is located in a beautiful location close to Aylesbury. As part of the ongoing re-development to Aylesbury town centre, these apartments offer modern, high specification homes close to all the local amenities, such as supermarkets, leisure centres and gyms, that this historic market town has for an apartment in a pleasant, county town just an hour by train from London.

The local transport system is fantastic, with a bus stop directly outside the development – looking to head to one of the major nearby cities, the train system is a mere 5-10 minute bus journey away. Aylesbury is under an hour away from London, Luton, Watford, Oxford and many more cities.



The Location

Aylesbury is located in Buckinghamshire between the Chiltern Hills and the Cotswolds. Aylesbury is a popular choice for commuters heading to London, with Aylesbury station just an 18-minute walk away. From there, trains to London Marylebone take around an hour. If you prefer driving, the A41 offers a similarly timed route. For other nearby destinations, Milton Keynes is 20 miles away, and Oxford is 27 miles, both easily accessible. Aylesbury also benefits from good local bus services, and for air travel, Luton Airport is just 31 miles away, approximately a 45-minute drive.

The town has a long and prosperous history, once a thriving Anglo-Saxon market town, it is even mentioned in the Domesday Book. The arrival of the canal and railways connected it to London and Birmingham in the early 19th century. In 1900, the town's population stood at a mere 1000, fast forward to today and it has increased to over 75,000 due to its desirable traits with close proximity to London.

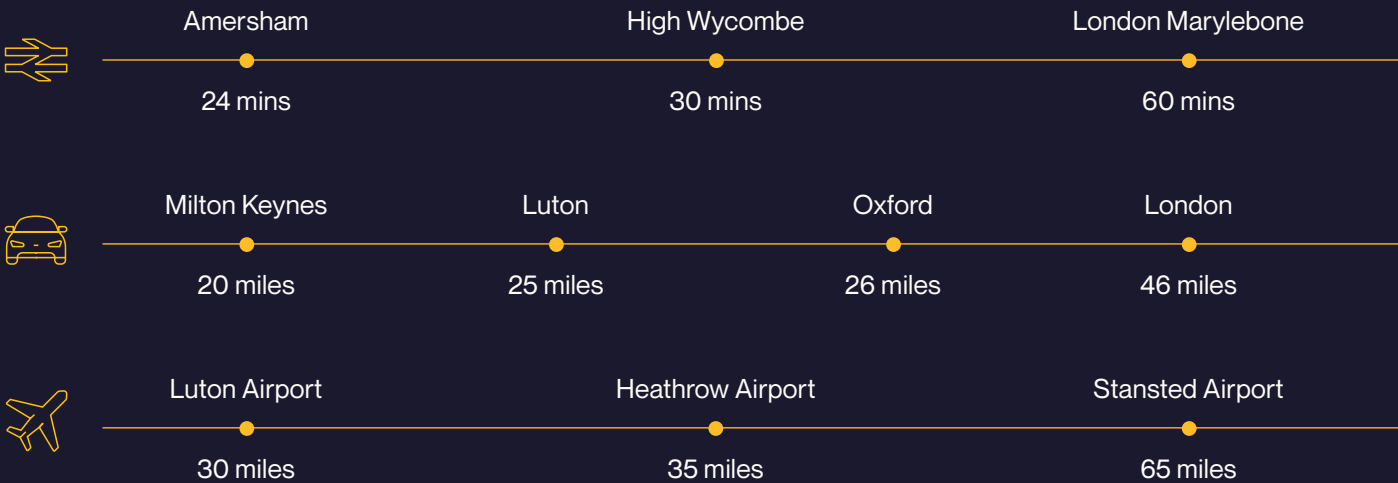




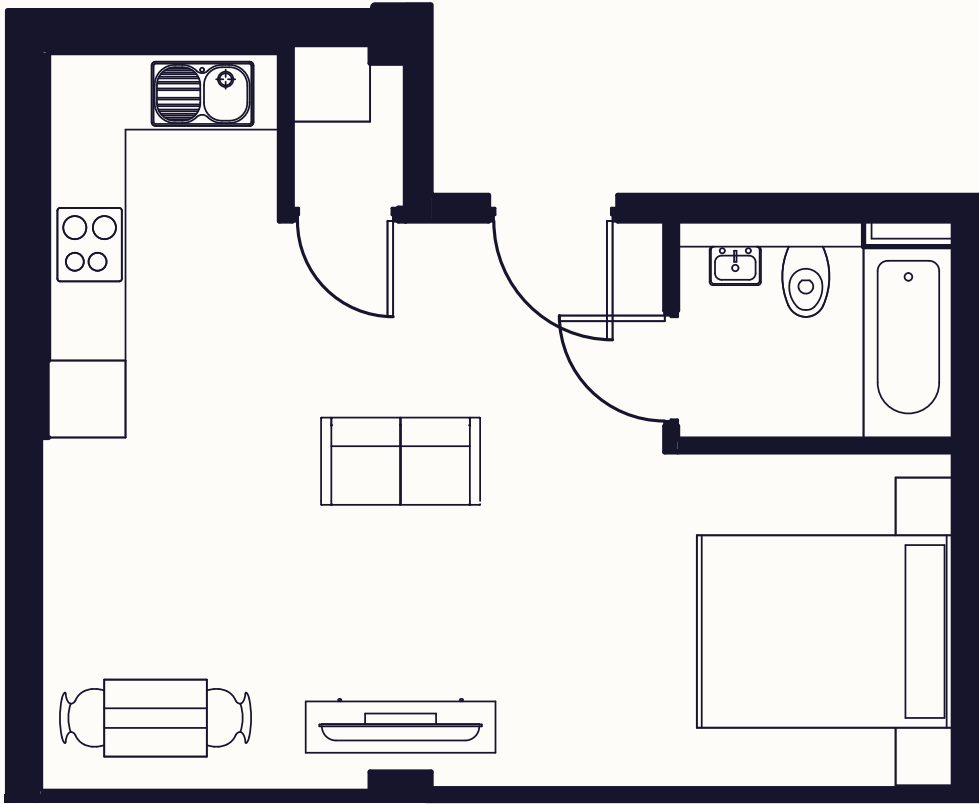
Staying Connected

Whether you're looking to enjoy the peace of suburban life or take advantage of Aylesbury's proximity to London, Castellum Apartments at Oxford House provides the perfect balance.

Castellum Apartments is just a few minutes from some gorgeous open countryside, perfect for walks, cycling or picnics. Tee off at the local golf club, Aylesbury Park Golf Club – or perhaps head into the centre of Aylesbury and take advantage of the large number of activities. All in all, you'll love living in Aylesbury at Castellum Apartments.



Studio Apartment

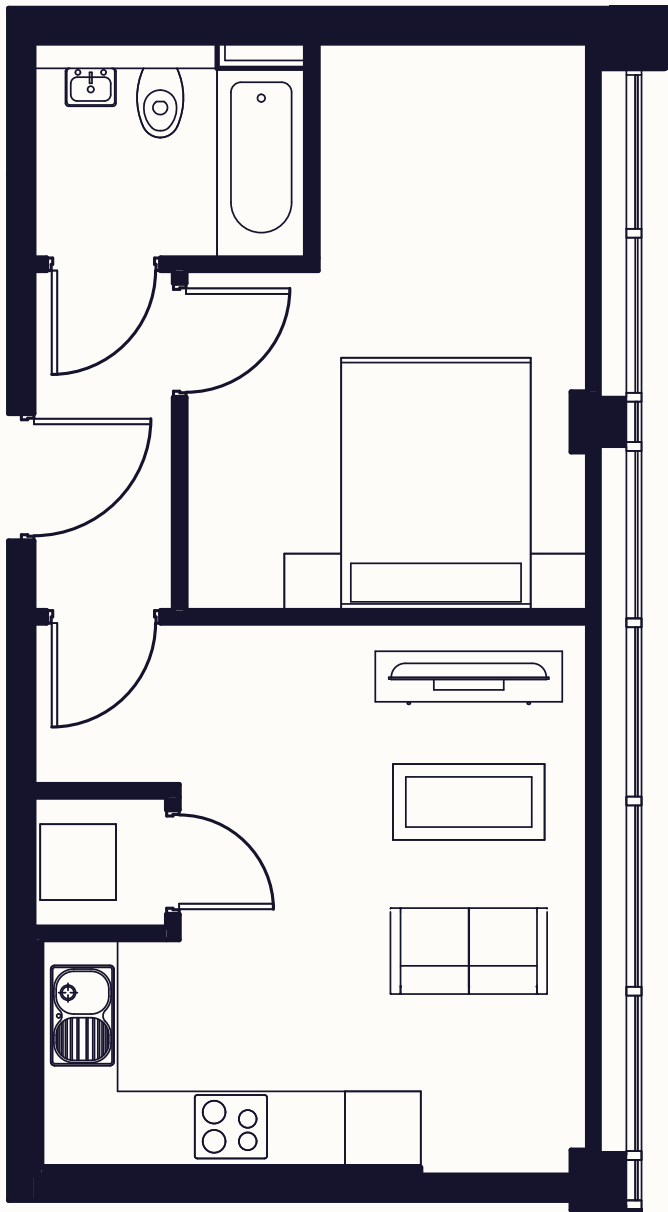


The studio apartments are contemporary, open-plan living spaces with modern finishes, high-quality integrated appliances, and plenty of natural light.

Average Studio Apartment Sq Ft:
 377 Sq Ft/ 35 m²

*All plans are based on concepts provided by the architect and developer, are indicative only and are subject to change.

One Bed Apartment

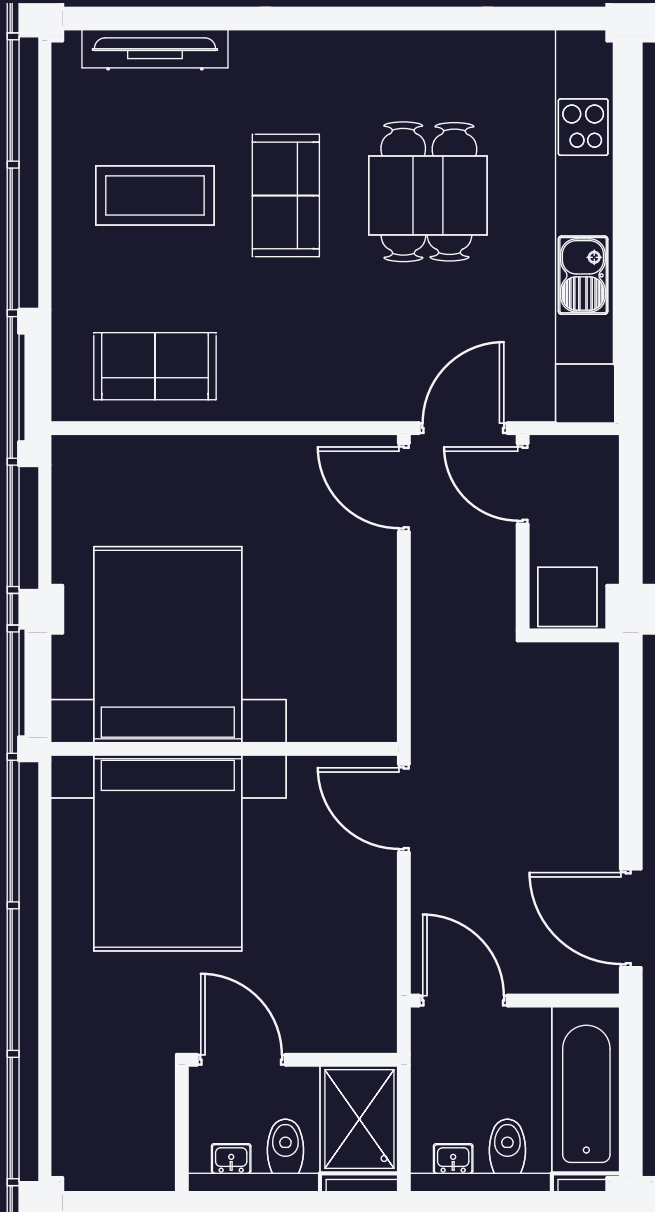


The studio apartments are contemporary, open-plan living spaces with modern finishes, high-quality integrated appliances, and plenty of natural light.

Average Studio Apartment Sq Ft:
420 Sq Ft/ 39 m²

*All plans are based on concepts provided by the architect and developer, are indicative only and are subject to change.

Two Bed Apartment

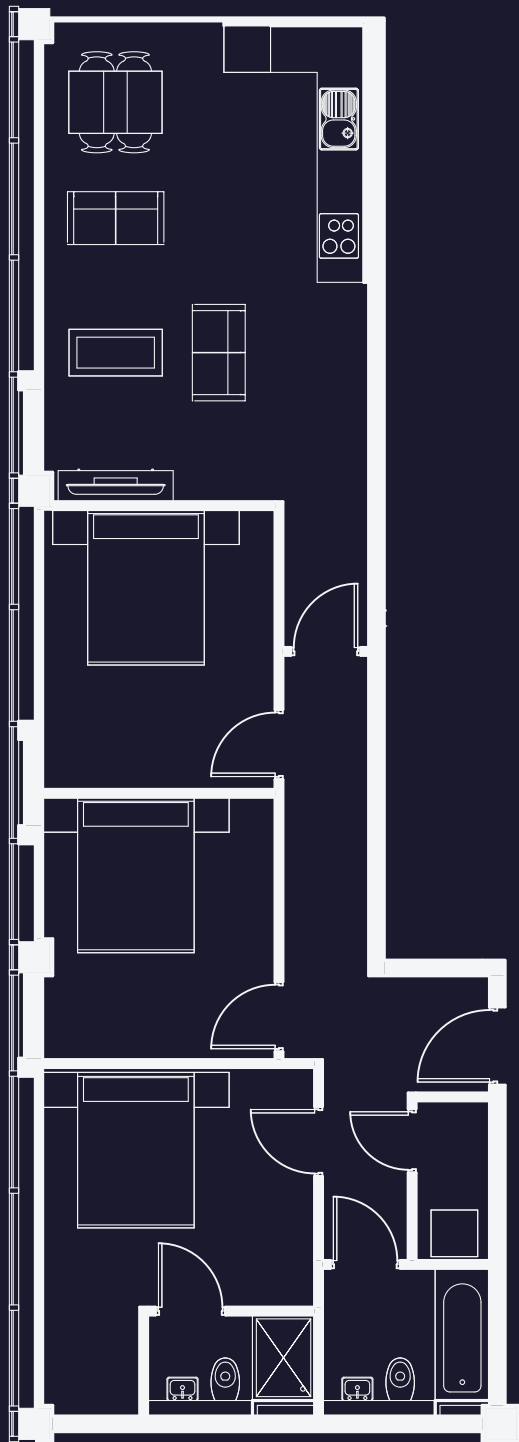


The studio apartments are contemporary, open-plan living spaces with modern finishes, high-quality integrated appliances, and plenty of natural light.

Average Studio Apartment Sq Ft:
732 Sq Ft/ 68 m²

*All plans are based on concepts provided by the architect and developer, are indicative only and are subject to change.

Three Bed Apartment



The studio apartments are contemporary, open-plan living spaces with modern finishes, high-quality integrated appliances, and plenty of natural light.

Average Studio Apartment Sq Ft:
904 Sq Ft/ 84 m²

*All plans are based on concepts provided by the architect and developer, are indicative only and are subject to change.

Contact Us

MCR Homes
Universal Square
Devonshire St N
Manchester
M12 6JH

www.mcr-homes.co.uk



 0161 274 0472  southlettings@mcr-homes.co.uk

Disclaimer:
We have done our very best to provide information to you that is accurate and honest at the time of print. The information should not be relied upon as a basis to enter into any contractual purchase commitment.

Given the nature of any off plan development, the images have been computer generated and are for indicative and illustrative purposes only. The specification included may change during the course of the construction period and could be subject to market conditions, such as availability of materials. If there is anything you are uncertain about, please raise a query in writing with your solicitor.

