



**84 Daventry Road**  
Knowle, Bristol, BS4 1DH

**Asking Price £265,000**





## 84 Daventry Road

Knowle, Bristol, BS4 1DH

\*\*\*\* NO CHAIN \*\*\*\*

Matthews and Co are delighted to bring to the sales market this ideally located, 3 bedroom semi detached property, set back from the road, with local allotments & green space, amenities & bus routes literally on your doorstep. The house itself boasts lovely views across the green in front and is situated on a great size, corner plot and briefly comprises of a lounge, dining room and kitchen to the ground floor, with three bedrooms and a bathroom to the first floor.

Outside the property benefits a wrap around garden gates to off street parking for 2 vehicles.

Ideal for first time buyers or a family in a great location close to local schools, shops and amenities and with bus routes to the City Centre near by.

Call today for a viewing.

### Hallway

### Lounge

16'11" x 10'7" (5.16 x 3.25)

### Dining room

10'10" x 10'9" (3.32 x 3.30)

### Kitchen

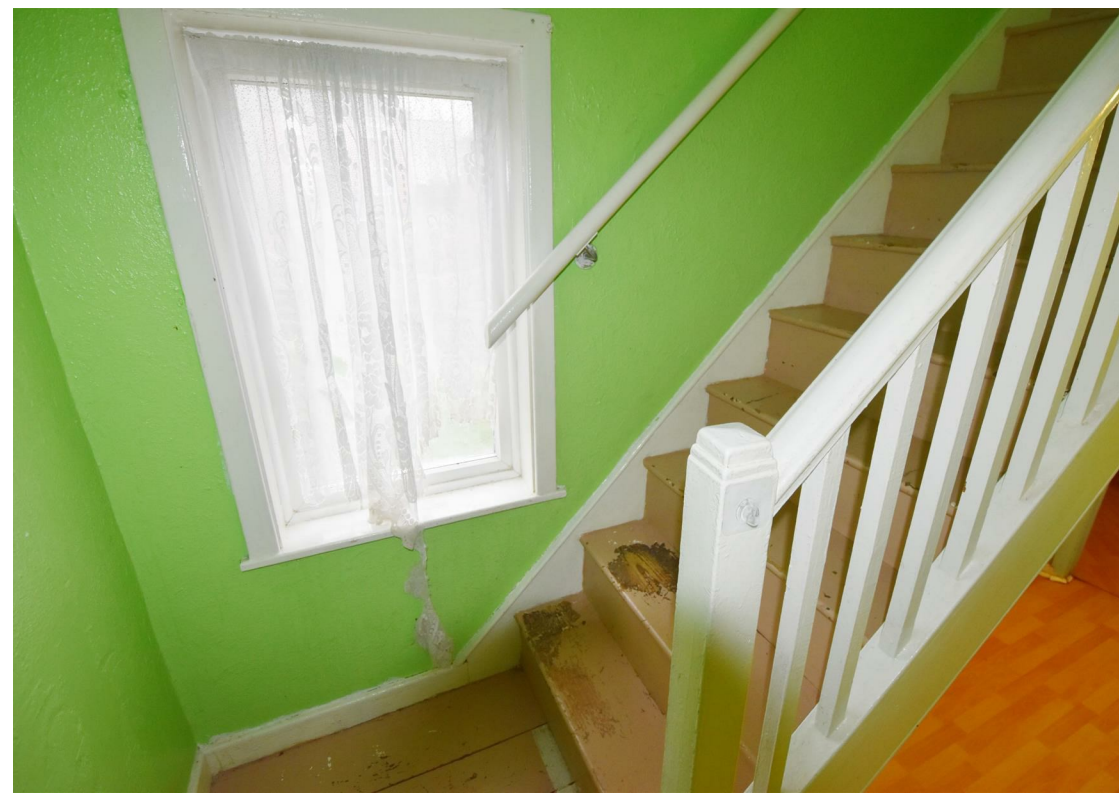
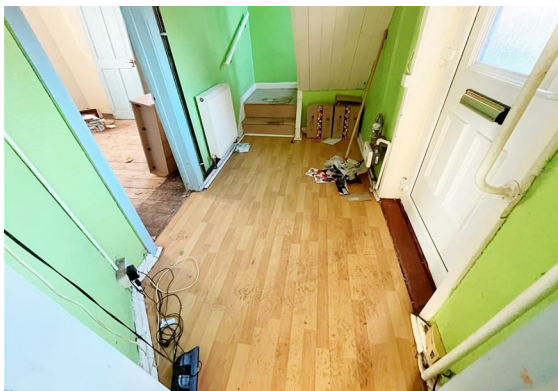
13'6" x 10'4" (4.13 x 3.15)

### Bed 1

13'10" x 8'5" (4.22 x 2.57)

### Bed 2

13'7" x 9'0" (4.16 x 2.75)

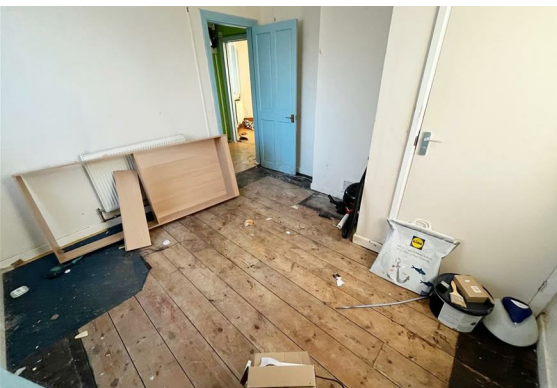






Bed 3  
10'6" x 7'6" (3.22 x 2.29)

Bathroom  
8'0" x 6'0" (2.44 x 1.84)



Floor Plan



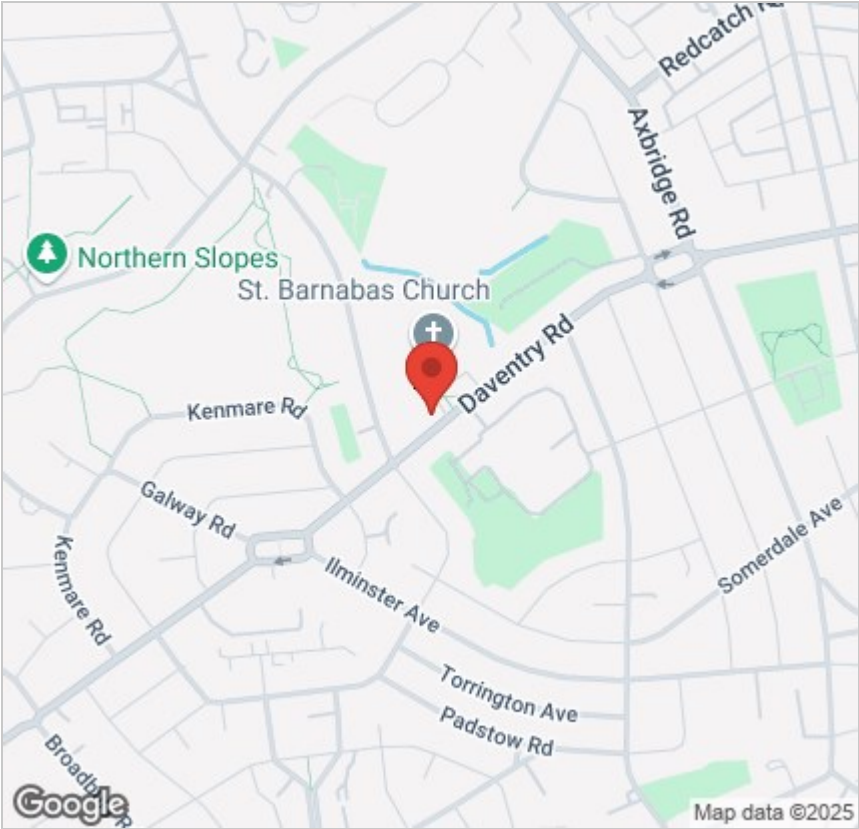
Viewing

Please contact our Knowle Office on 01179 711417 if you wish to arrange a viewing appointment for this property or require further information.

These particulars, whilst believed to be accurate are set out as a general outline only for guidance and do not constitute any part of an offer or contract. Intending purchasers should not rely on them as statements of representation of fact, but must satisfy themselves by inspection or otherwise as to their accuracy. No person in this firms employment has the authority to make or give any representation or warranty in respect of the property.

298 Wells Road, Knowle, Bristol, BS4 2QG

Area Map



Energy Efficiency Graph

