



First Floor Flat, 7 Henry Street  
, Totterdown, BS3 4UD

**Asking Price £229,995**



## First Floor Flat, 7 Henry

Totterdown, BS3 4UD

**\*\*NO CHAIN\*\***

Matthews Estates are delighted to bring to the sales market this superbly located, 1 bedroom flat in the heart of Totterdown, perfectly placed for a stroll into the City Centre or the vibrant Harbourside, yet plenty for the new owner/s to enjoy on your doorstep itself with local shops, independent bakeries, pubs and eateries and the glorious Victoria Park all within striking distance!

The property has recently been refurbished to a high standard and consists of a communal hallway, with a door leading to steps to the first floor. There you will find a large open plan living space with plenty of natural daylight. The kitchen area has been fitted with an oven and washing machine. There is a modern shower room just off the living space and then a double bedroom with cupboard to the front of the property.

Call today to book a viewing of this house!

**Living Space**  
15'11" x 13'6" (4.87 x 4.12)

**Shower room**  
9'6" x 3'11" (2.92 x 1.21)

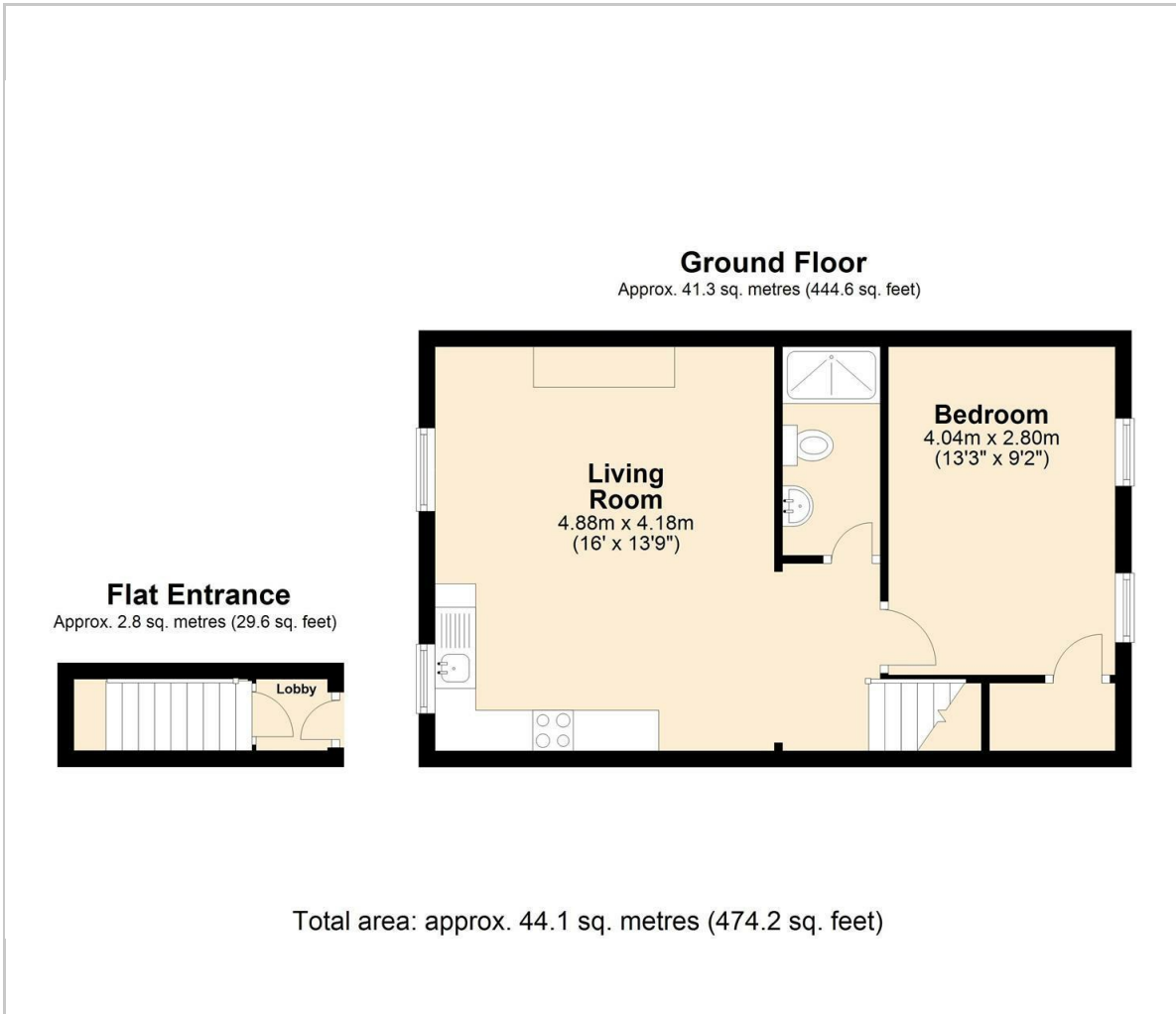
**Bedroom**  
13'4" x 9'1" (4.08 x 2.78)

**Communal Hallway**  
4'11" x 3'11" (1.50 x 1.20)





## Floor Plan



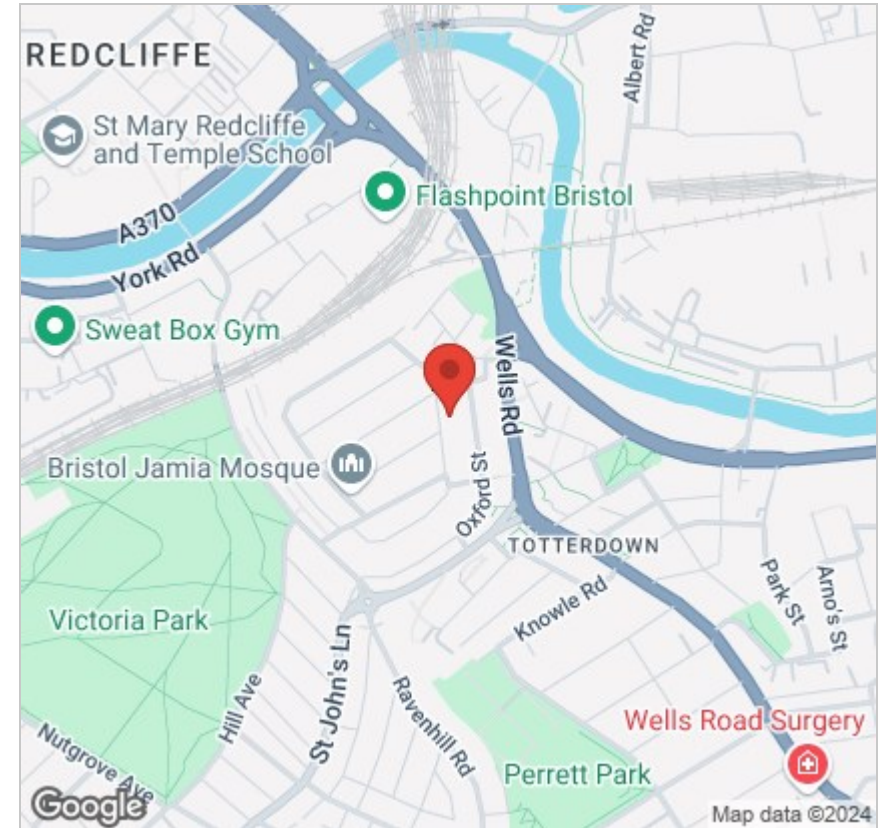
## Viewing

Please contact our Knowle Office on 01179 711417 if you wish to arrange a viewing appointment for this property or require further information.

These particulars, whilst believed to be accurate are set out as a general outline only for guidance and do not constitute any part of an offer or contract. Intending purchasers should not rely on them as statements of representation of fact, but must satisfy themselves by inspection or otherwise as to their accuracy. No person in this firm's employment has the authority to make or give any representation or warranty in respect of the property.

298 Wells Road, Knowle, Bristol, BS4 2QG

## Area Map



## Energy Efficiency Graph

