



502 Bath Road  
, Brislington, Bristol, BS4 3JY  
**£975 Per Calendar Month**



## 502 Bath Road

, Brislington, Bristol, BS4 3JY

Superbly located,, one bedroom, first floor flat, situated within a fine, Victorian property, in an elevated position on the A4 Bath Road.

Set back from the road itself and boasting views over the neighbouring Arnos Park, the flat is in an excellent location due to its proximity to Bristol Temple Meads & City Centre and with many shops and amenities close to hand as well.

The flat itself comes with an all important allocated parking space, generously proportioned rooms and internally comprises of a communal entrance, hallway, great size lounge, bedroom, fitted kitchen and bathroom.

No pets.

Ideal for professional couples o.

Call today for a viewing.



Communal entrance

Flat entrance

Hallway

Lounge  
15'11" x 13'7" (4.86 x 4.13)

Kitchen  
13'3" x 9'3" (4.04 x 2.81)

Bathroom  
5'10" x 5'10" (1.79 x 1.78)

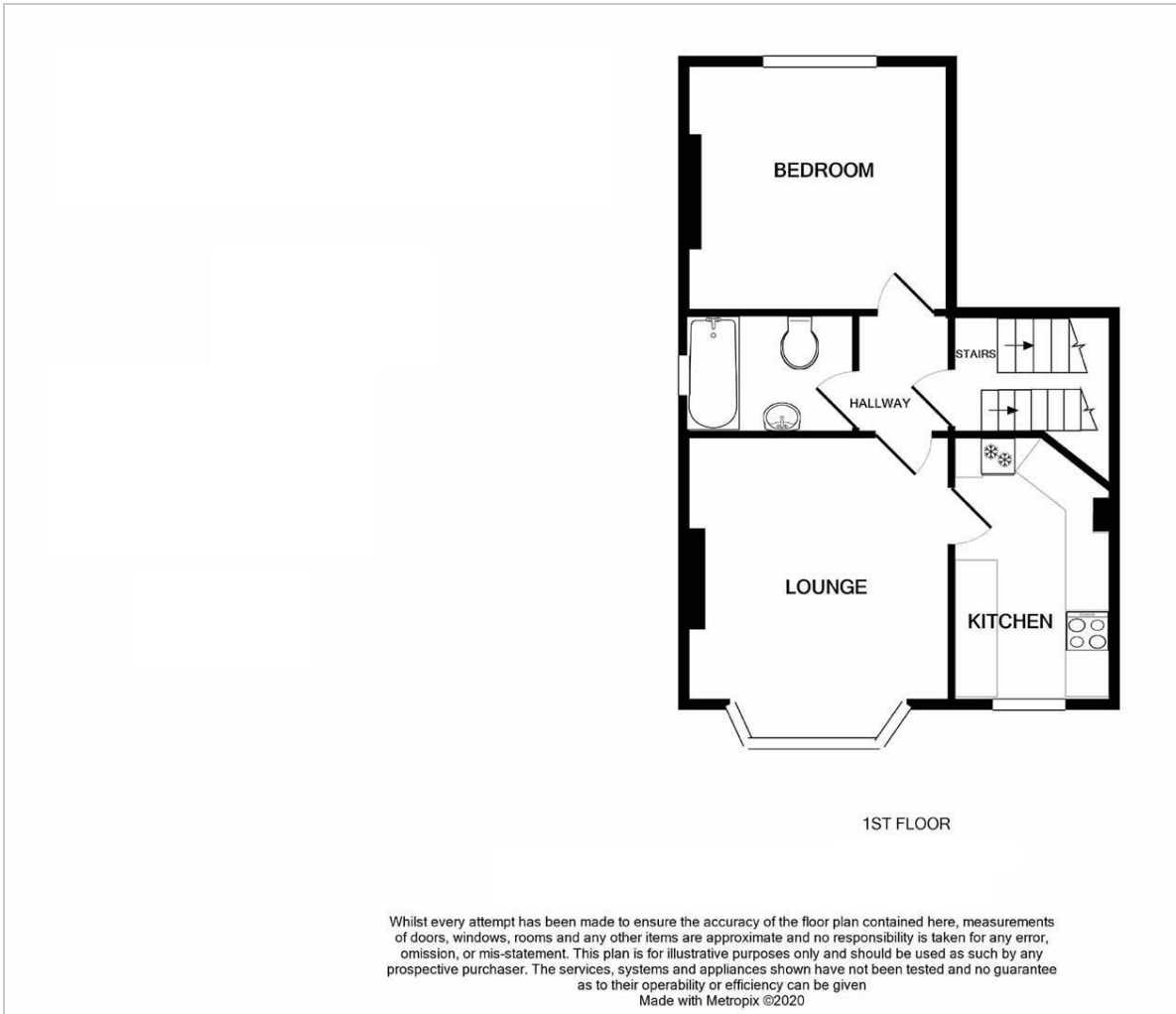
Bedroom  
14'0" x 12'7" (4.26 x 3.84)





Allocated car park space  
Outside to front  
Amos Park

## Floor Plan



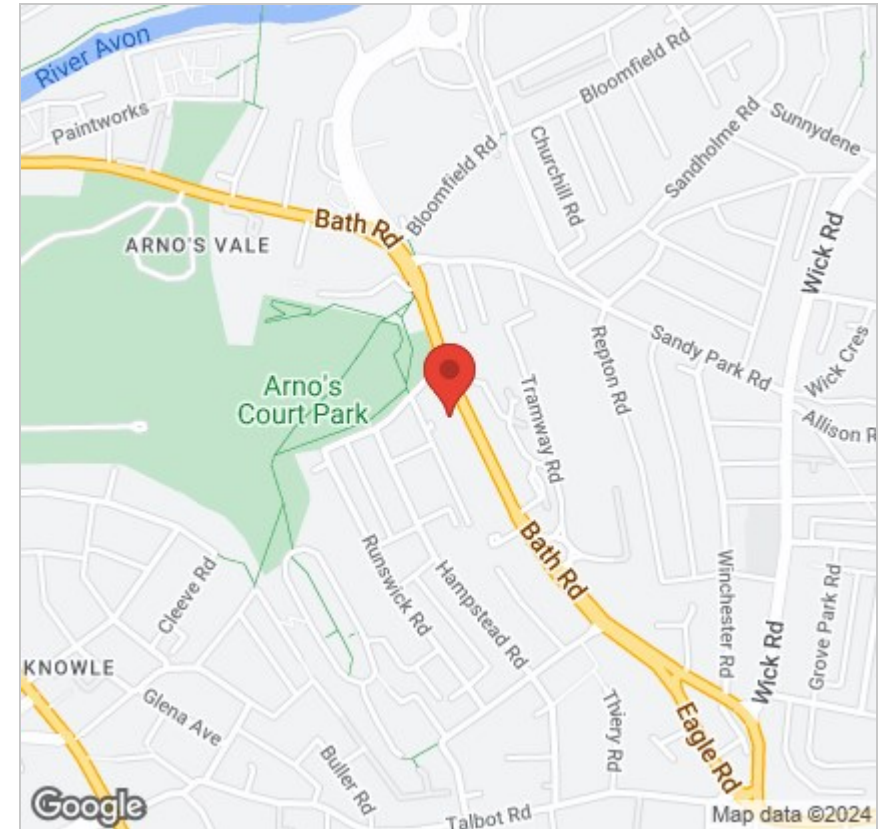
## Viewing

Please contact our Knowle Office on 01179 711417 if you wish to arrange a viewing appointment for this property or require further information.

These particulars, whilst believed to be accurate are set out as a general outline only for guidance and do not constitute any part of an offer or contract. Intending purchasers should not rely on them as statements of representation of fact, but must satisfy themselves by inspection or otherwise as to their accuracy. No person in this firm's employment has the authority to make or give any representation or warranty in respect of the property.

298 Wells Road, Knowle, Bristol, BS4 2QG

## Area Map



## Energy Efficiency Graph

