



Flat 4 Redcatch Court Redcatch Road
Knowle, Bristol, BS4 2EP

£1,250 Per Calendar Month



Flat 4 Redcatch Court

Knowle, Bristol, BS4 2EP

Matthews Estates are delighted to offer to the rental market this stunning, 2 BEDROOM, contemporary, top floor flat is set within a sleek modern development situated on the entrance to Redcatch Road in the very heart of Knowle!

With Broad Walk Shopping centre right behind you, there is an abundance of local shops, cafe's bakeries (one next door) Drs, pharmacies and much more literally on your doorstep!

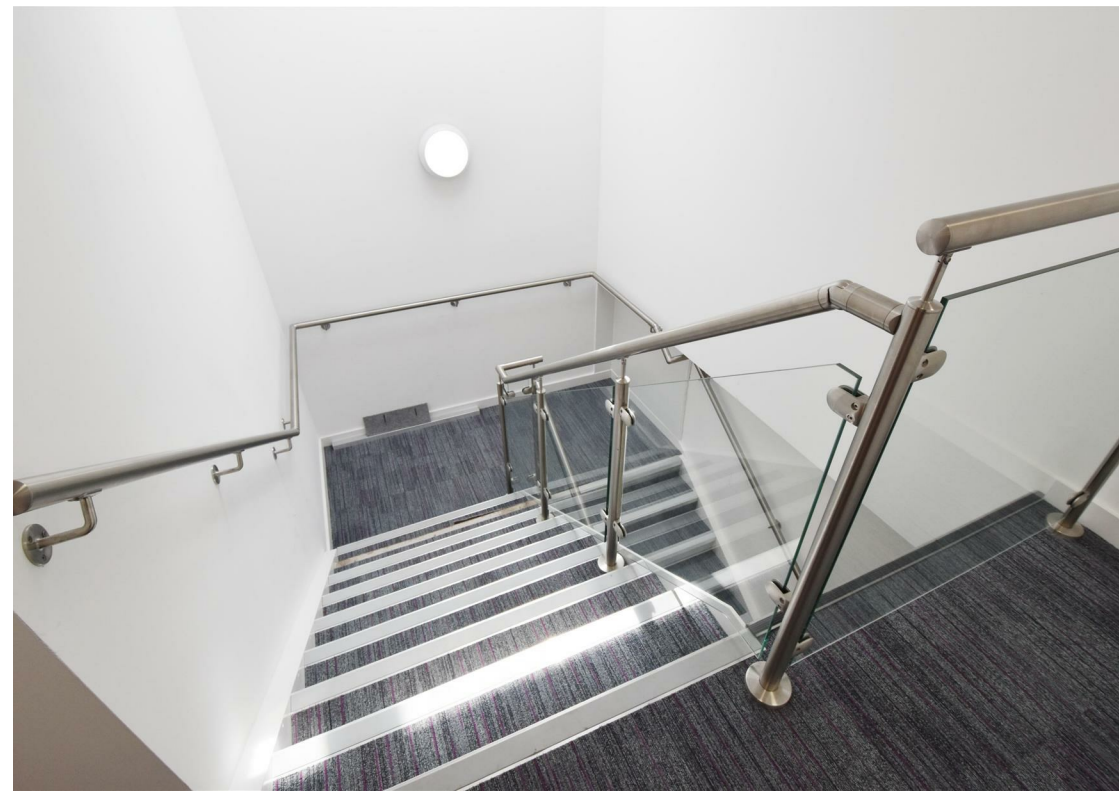
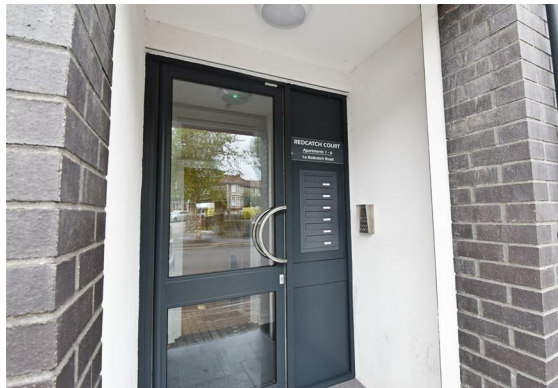
Redcatch Park is a few hundred yards away with plenty of green space to enjoy as well.

The property offers entertaining/living space with an open plan kitchen (with white goods)/lounge/dining area and also benefits from two bedrooms and a shower room.

The flats have been built with safety in mind and offer a well lit, private entrance with entry buzzer system.

Suitable for professional couple or individual. NO PETS or SHARERS.

email - james@matthewsestates.co.uk





Floor Plan



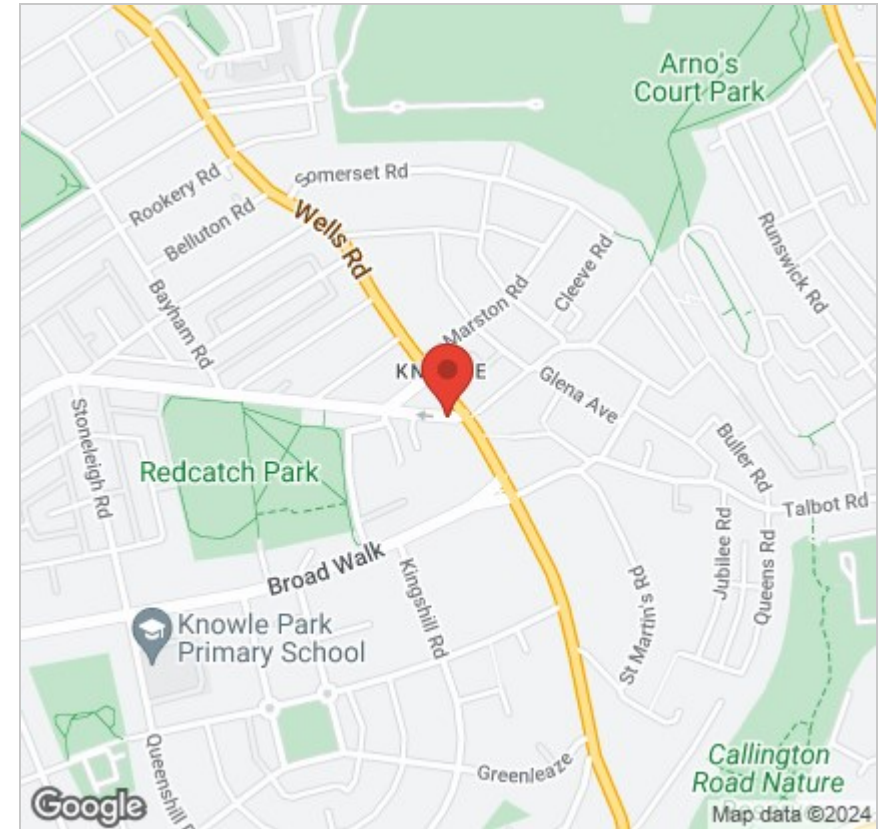
Viewing

Please contact our Knowle Office on 01179 711417 if you wish to arrange a viewing appointment for this property or require further information.

These particulars, whilst believed to be accurate are set out as a general outline only for guidance and do not constitute any part of an offer or contract. Intending purchasers should not rely on them as statements of representation of fact, but must satisfy themselves by inspection or otherwise as to their accuracy. No person in this firm's employment has the authority to make or give any representation or warranty in respect of the property.

298 Wells Road, Knowle, Bristol, BS4 2QG

Area Map



Energy Efficiency Graph

