



24 St. Whytes Road
Knowle, Bristol, BS4 1RY

£319,995



24 St. Whytes Road

Knowle, Bristol, BS4 1RY

Matthews Estates are delighted to offer to the sales market this wonderfully presented, family home in a great situation in Knowle, close to local schools and many amenities that the area has to offer. Having been modernized throughout with fantastic open-plan/sociable living space to the ground floor, the house briefly comprises of an attractive entrance hallway, lounge opening onto the dining room opening onto the modern kitchen to the ground floor with three well presented bedrooms and a contemporary bathroom to the first floor. Outside the property boasts off street parking to the front, enclosed rear garden complete with lawn, patio, decking and side lean to with storage. Call today for a viewing.



Hallway

Lounge
11'2" x 10'8" (3.408m x 3.261m)

Dining area
10'11" x 14'7" (3.330m x 4.455m)

Kitchen area
10'2" x 9'1" (3.100m x 2.775m)

Lean to

Lobby

Landing

Bedroom one
12'6" x 10'11" (3.827m x 3.339m)

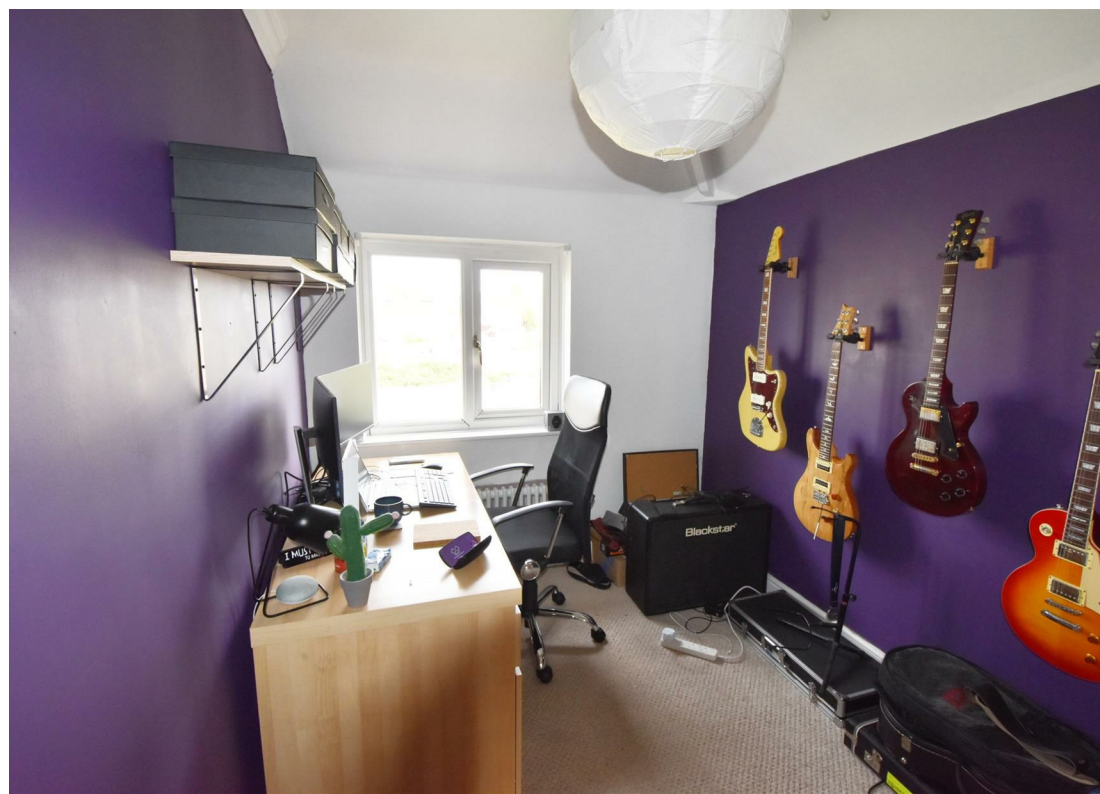
Bedroom two
10'8" x 10'4" (3.265m x 3.175m)





Bedroom three
10'11" x 7'3" (3.328m x 2.222m)

Bathroom
7'5" x 7'2" (2.281m x 2.191m)



Floor Plan



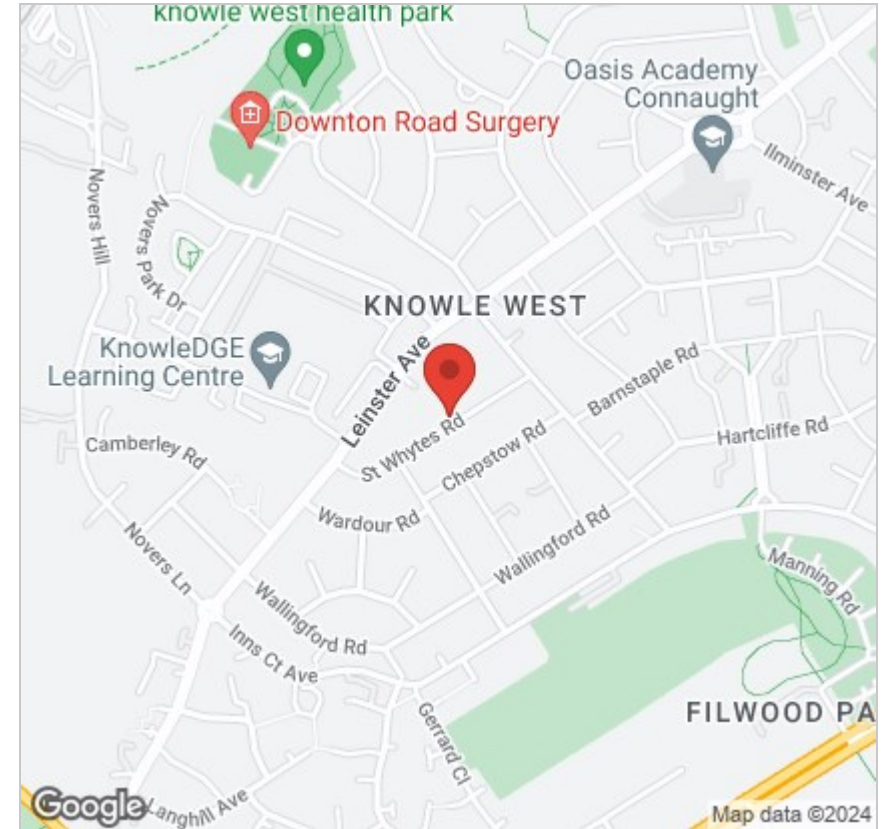
Viewing

Please contact our Knowle Office on 01179 711417 if you wish to arrange a viewing appointment for this property or require further information.

These particulars, whilst believed to be accurate are set out as a general outline only for guidance and do not constitute any part of an offer or contract. Intending purchasers should not rely on them as statements of representation of fact, but must satisfy themselves by inspection or otherwise as to their accuracy. No person in this firm's employment has the authority to make or give any representation or warranty in respect of the property.

298 Wells Road, Knowle, Bristol, BS4 2QG

Area Map



Energy Efficiency Graph

