



Guide Price
£1,100,000
Freehold

Grove Lane, Chigwell, Essex, IG7

Grove Lane, Chigwell, Essex, IG7

0.9 miles from Grange Hill Station
11.3 miles from Canary Wharf Station
24.6 miles from Stansted Airport



A stunning newly built detached house
with a wealth of modern conveniences.



Being sold chain-free and ready to move
straight into

Off street parking with a 7 KW electric
vehicle charging points

Secure gated access with an entry
phone system

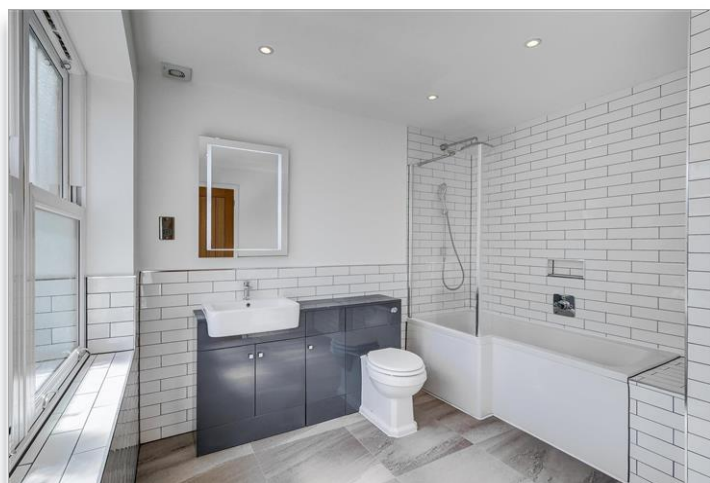
Bespoke kitchen with integrated NEFF
appliances and marble countertops

Ultra-fast full fibre broadband

Air source heat pump for both hot
water and heating

Underfloor heating throughout the
ground floor and all bath/shower rooms

A 10-year NHBC builder's warranty





Upon entering the house, you are greeted by a spacious hallway with tiled flooring, leading to a guest cloakroom. The sitting room offers ample space, with a front-facing window that floods the room with natural light. A versatile study features windows to both the front and side, providing an ideal space for work or to use as a playroom.

The heart of the home is the open-plan living room and kitchen/breakfast room. These beautifully designed spaces boast three sets of French doors opening onto the rear garden's paved patio area, along with large windows that allow plenty of light. The kitchen itself includes high-end integrated NEFF appliances such as a hob with extractor, oven, grill, microwave, fridge-freezer, and dishwasher. The bespoke kitchen units are complemented by marble countertops and a tiled floor. Just off the kitchen is a handy utility room with access to the garden.

The first floor offers three generously sized double bedrooms. Two of the rooms have rear-facing windows offering stunning

views of the surrounding farmland, the principal bedroom featuring an en-suite shower room. While a spacious modern bathroom serves the other rooms.

On the second floor, you'll find two well-proportioned bedrooms, complete with Velux windows. A balcony with panoramic farmland views and another modern luxury bathroom complete this floor. The rear garden is the perfect sun-soaked retreat, with more incredible views of the countryside. It includes a large patio finished in Indian sandstone and a well-maintained lawn with planted borders. At the front there is parking for two vehicles and an electric car charging point.

What the owner says...

"We love the area because it is very safe and whilst it has a beautiful rural location and views it is still easily accessible with well lit roads. The natural light and sunsets are fabulous. Its close to all amenities and transport including the Central Line but still has a country feel with regular visits across the fields at back from lots of wildlife."

Accommodation

GROUND FLOOR

Hallway

13'8 x 8'7 (4.17m x 2.62m)

Cloakroom

Sitting Room

16'0 x 10'7 (4.88m x 3.23m)

Study

9'9 x 8'8 (2.97m x 2.64m)

Open Plan Living Room

20'0 x 12'10 (6.10m x 3.91m)

Kitchen/Breakfast Room

22'4 x 9'4 (6.81m x 2.85m)

Utility Room

9'0 x 5'11 (2.75m x 1.80m)

FIRST FLOOR

Landing

Principal Bedroom

15'2 x 10'8 (4.63m x 3.25m)

En-Suite Shower Room

Bedroom 2

13'8 x 9'3 (4.17m x 2.82m)

Bedroom 3

12'1 x 10'8 (3.69m x 3.25m)

Bathroom

SECOND FLOOR

Landing

Bedroom 4

26'0 x 10'7 (7.93m x 3.23m)

Bedroom 5

21'5 x 9'2 (6.53m x 2.80m)

Bathroom

Balcony

OUTSIDE

Rear Garden

Off Street Parking

Scan me with your smart phone to view all our properties online or download the app.

Available on the
App Store



Viewing: Strictly by appointment with Fine & Country's offices in:

Loughton on 020 8418 0018

234 High Road, Loughton, Essex, IG10 1RB

loughton@fineandcountry.com

London office

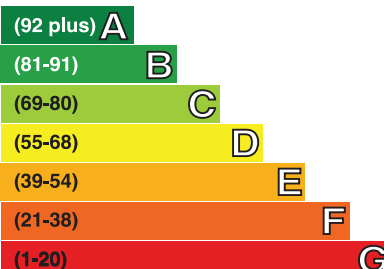
121 Park Lane, Mayfair, London, W1K 7AG



fineandcountry.com

Energy Efficiency Rating

Very energy efficient - lower running costs



Not energy efficient - higher running costs

Current	Potential
86	92