



Roxwell - Henfield Road, Upper Beeding, BN44 3TF
Asking Price £650,000

Roxwell - Henfield Road, Upper Beeding, BN44 3TF

The Property & Area

Welcome to 'Roxwell' in Upper Beeding - This beautiful bungalow offers a lovely country-style feel with its picturesque surroundings and modern features.

As you approach Roxwell from its large driveway, it's clear that it provides maximum privacy and tranquility. Once inside, you are greeted by an open plan living area combining the lounge, dining area, and kitchen. This design not only promotes a sense of space but also facilitates family togetherness and social gatherings.

One of the standout features of this bungalow is the view, it really does need to be seen to appreciate what is on offer at Roxwell. The nearby fields provide a sensational backdrop.

The property offers three well proportioned bedrooms, each providing ample space and natural light to create a peaceful space. There is also a 4th bedroom which could be a hobby room or office. The main bedroom has an en-suite bathroom, enhancing your privacy and convenience. Additionally, the two remaining bedrooms are perfect for family members or guests.

Externally, this beautiful bungalow is situated on a corner plot, further enhancing its appeal. The landscaped gardens surround the property, offering a mix of beautiful flowers, lawns, and mature trees. Whether it's a summer BBQ or an evening enjoying the sunset, this outdoor space provides the perfect setting for all.

For those seeking additional storage or parking requirements, the bungalow includes a detached garage and off-road parking, ensuring convenience and ample secure space.

You will quickly realise the benefits of its popular location in Upper Beeding. You can enjoy the best of both worlds - the stunning local countryside and the proximity to essential amenities. From charming local shops to reputable schools, everything you need is within easy reach.

Furthermore, the sellers are already suited with a new property, ensuring a straightforward transaction for the new owners.

Material Information:

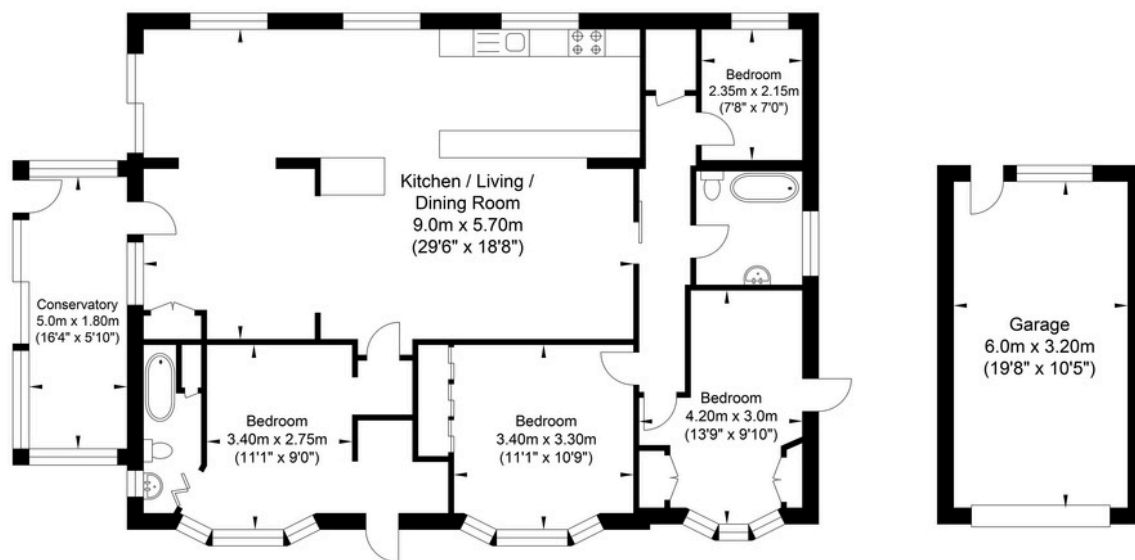
Tenure: Freehold

Council Tax: F

There is a boat on the property that could stay or be removed.



Henfield Road, Upper Beeding



Approximate Gross Internal Area (Excluding Garage) = 119.37 sq m / 1284.88 sq ft
Illustration for identification purposes only, measurements are approximate, not to scale.



Oakley

Your Sussex Property Expert

Shoreham Property Hub
01273 661 577

6 Brunswick Road, Shoreham BN43 5WB
www.oakleyproperty.com
shoreham@oakleyproperty.com

We also have offices in:
Lewes
Brighton & Hove



Scan to watch the video tour

Get in touch to book a viewing or market
valuation of your own property

Energy Performance Certificate



Please note:

These details have been produced in good faith and are believed to be accurate based upon the information supplied but they are not intended to form part of a contract. All statements contained in these particulars as to this property are made without responsibility on the part of Oakley, the vendors or lessors and are NOT to be relied on as statements or representations of fact. Any intending purchasers must satisfy themselves by inspection or otherwise as to the correctness of each of the statements contained in these particulars. The vendors, Oakley and any person who work in their employment do not have any authority to make or give any representation or warranty. The floor plan is for illustrative purposes only and the accuracy cannot be relied upon or guaranteed and no responsibility is taken for an error, omission or mis-statement. The total floor area shown has been taken from the EPC.

