



Southview Road, Southwick, West Sussex, BN42 4TW
Guide Price £675,000

Southview Road, Southwick, West Sussex, BN42 4TW

The Property & Area

WELCOME TO THIS EXQUISITE PERIOD FAMILY HOME, LOCATED IN THE CHARMING TOWN OF SOUTHWICK. WITH ITS BEAUTIFUL ARCHITECTURE, SPACIOUS ROOMS, AND STUNNING FEATURES, THIS PROPERTY IS SURE TO CAPTIVATE YOU.

Upon entering, you are greeted by an inviting hallway that leads you to the main reception room. This well-proportioned space boasts large windows that flood the room with natural light, creating a warm and welcoming ambiance. The second reception room offers additional flexibility, perfect for formal dining.

The kitchen/breakfast room is a true delight, featuring modern appliances, ample cupboard space, and plenty of room for a dining table. It's the ideal place to gather with family and friends, enjoying delicious meals and engaging conversations. To the rear of the kitchen are double doors giving access to the rear garden. Completing the ground floor is a convenient W.C.

Upstairs, you will find four bedrooms, each offering comfort and tranquility providing a private sanctuary for relaxation. Additionally, there is a study, providing the perfect setting for working from home or pursuing personal hobbies.

The highlight of this property is undoubtedly the amazing west-facing garden. Step outside and be greeted by a large patio immediately adjacent to the rear of the property, where you can bask in the warm sunshine or enjoy alfresco dining. The well-manicured lawn is perfect for children to play, and the garden also offers space for gardening enthusiasts. To the rear of the garden you will find a pitched roof timber built summer house.

Offering not only beauty but practicality, this property features off-road parking to the front, ensuring convenience and peace of mind.

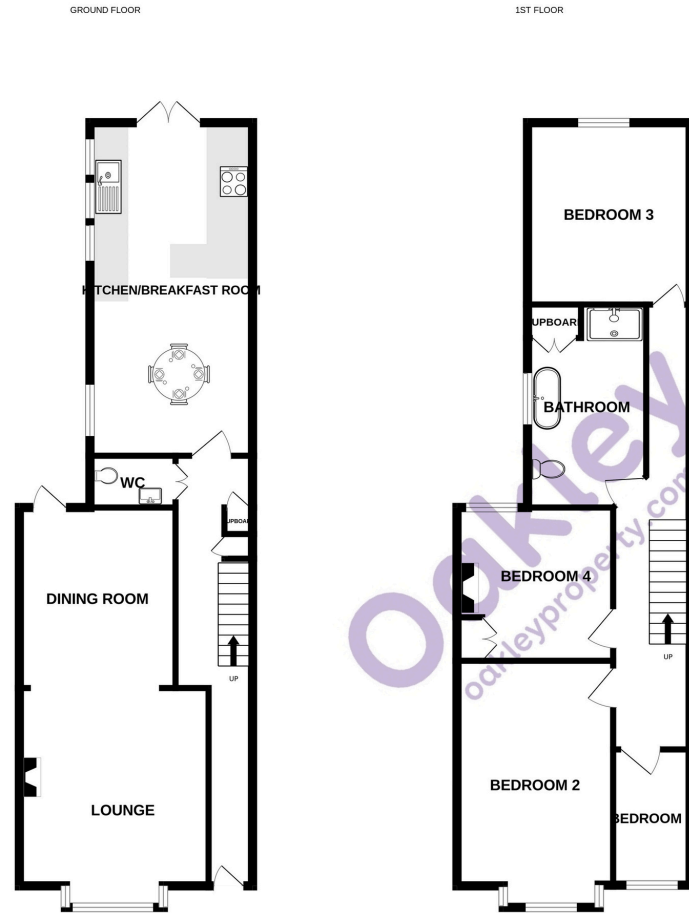
Situated in a desirable location, this home is just a stone's throw away from Southwick Green, providing a peaceful retreat and leisurely walks to Southwick Square with its many shops, cafe's and restaurants . For commuters, Southwick Railway Station is conveniently nearby, allowing easy access to surrounding areas.

With its stunning period features, spacious rooms, and a delightful garden, this house offers the perfect setting for creating unforgettable memories. Don't miss out on this incredible opportunity to make this beautiful property your new home. Contact us today to arrange a viewing and experience the charm of this wonderful Southwick home.

Contact us today to arrange a viewing! 01273 661577
shoreham@oakleyproperty.com



FLOORPLAN



Made with Metropix ©2023

Agents Notes

Tenure - Freehold
Council Tax: D

Energy Performance Certificate

Score	Energy rating	Current	Potential
92+	A		
81-91	B		
69-80	C		76 C
55-68	D		
39-54	E	45 E	
21-38	F		
1-20	G		



Please note:
These details have been produced in good faith and are believed to be accurate based upon the information supplied but they are not intended to form part of a contract. All statements contained in these particulars as to this property are made without responsibility on the part of Oakley, the vendors or lessors and are NOT to be relied on as statements or representations of fact. Any intending purchasers must satisfy themselves by inspection or otherwise as to the correctness of each of the statements contained in these particulars. The vendors, Oakley and any person who work in their employment do not have any authority to make or give any representation or warranty. The floor plan is for illustrative purposes only and the accuracy cannot be relied upon or guaranteed and no responsibility is taken for an error, omission or mis-statement. The total floor area shown has been taken from the EPC.



Oakley

Your Sussex Property Expert

Shoreham Property Hub
01273 661 577

6 Brunswick Road, Shoreham BN43 5WB
www.oakleyproperty.com
shoreham@oakleyproperty.com

We also have offices in:
Lewes
Brighton & Hove



Property Video

Get in touch to book a viewing or valuation of your own property

