



Widewater Court, Shoreham Beach, BN43 5LS

Asking Price £350,000

Widewater Court, Shoreham Beach, BN43 5LS

The Property & Area

INTRODUCING A TRULY EXCEPTIONAL PROPERTY NESTLED IN THE HEART OF SHOREHAM BEACH IN WEST SUSSEX.

This stunning 1 bedroom apartment offers a penthouse-style living experience with its magnificent terrace boasting unrivaled views of the coastline and surrounding downs.

Whether you're a first-time buyer, couple, or investor, this amazing property presents a fantastic opportunity to own a piece of seaside paradise.

The apartment's contemporary design, thoughtful layout, and luxurious finishes are superb. The modern kitchen has views of the sea towards Brighton and is equipped with appliances and ample storage space.

The double bedroom is a tranquil sanctuary, flooded with natural light and offering picturesque sea views. Wake up to the soothing sound of waves crashing against the shore. This space is perfect for unwinding after a long day, offering a peaceful retreat from the hustle and bustle of everyday life. As you move through the apartment, you'll find a beautifully appointed bathroom suite.

The lounge and dining area provide ample space for entertainment and relaxation, ensuring that every moment spent in this home is one of comfort and enjoyment.

Large windows frame the breathtaking views, allowing you to lose yourself in the beauty of nature. Convenience is taken care of with a garage and a store cupboard, providing additional storage options and ensuring that your belongings are kept in perfect order. Location is everything, and this property certainly ticks that box. Situated in a superb beach location, you'll have direct access to the pristine beach.

Imagine starting your day with a refreshing beach walk! Shoreham offers a vibrant seaside community, bustling with local cafes, restaurants, and shops, ensuring that every day brings a new adventure.

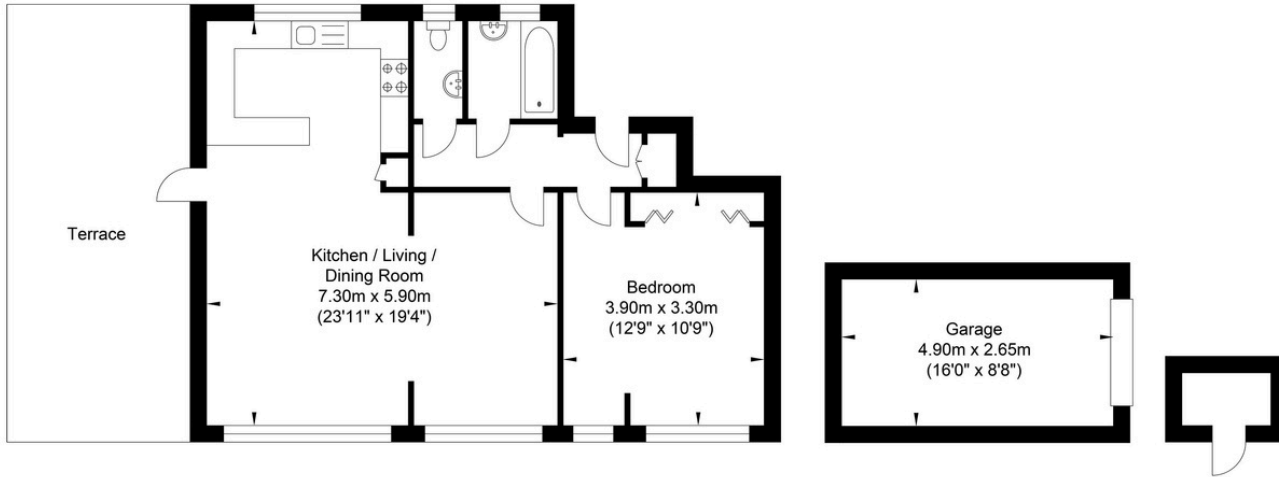
Whether you're seeking a peaceful retreat, an investment opportunity, or a holiday home, this property has it all. Embrace coastal living at its finest. Contact us today to arrange a viewing!

01273 661577

shoreham@oakleyproperty.com



Widewater Court, Shoreham-by-Sea



Fourth Floor
Approximate Floor Area
690.07 sq ft
(64.11 sq m)

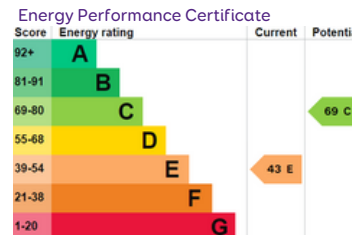
Garage
Approximate Floor Area
139.82 sq ft
(12.99 sq m)

Storage
Approximate Floor Area
16.36 sq ft
(1.52 sq m)

Approximate Gross Internal Area = 78.62 sq m / 846.25 sq ft

Illustration for identification purposes only, measurements are approximate, not to scale.

Tenure - Share of Freehold
Lease length - 999
Maintenance - £1500 (1/4/24 - 1/9/2024)
Council Tax Band - C



Please note:

These details have been produced in good faith and are believed to be accurate based upon the information supplied but they are not intended to form part of a contract. All statements contained in these particulars as to this property are made without responsibility on the part of Oakley, the vendors or lessors and are NOT to be relied on as statements or representations of fact. Any intending purchasers must satisfy themselves by inspection or otherwise as to the correctness of each of the statements contained in these particulars. The vendors, Oakley and any person who work in their employment do not have any authority to make or give any representation or warranty. The floor plan is for illustrative purposes only and the accuracy cannot be relied upon or guaranteed and no responsibility is taken for an error, omission or mis-statement. The total floor area shown has been taken from the EPC.



Oakley

Your Sussex Property Expert

Shoreham Property Hub
01273 661 577

6 Brunswick Road, Shoreham BN43 5WB
www.oakleyproperty.com
shoreham@oakleyproperty.com

We also have offices in:
Lewes
Brighton & Hove
The London Office

Property Video

Get in touch to book a viewing or valuation of your own property

