



The Mews House



The Mews House

The Square, Beaminster, DT8 3AU

OFFERS INVITED. Three bedroom mews house in the heart of historic Beaminster with amenities on the doorstep.

- Three bedrooms
- Large Garden
- Tucked away, yet very central position
- Amenities on the doorstep
- WC and bathroom
- Character features
- No forward chain
- Freehold
- Council tax band D

Guide Price £425,000

SITUATION

Beaminster is a delightful town, well known for its historic buildings and excellent amenities centred around The Square. It offers a wide range of amenities with convenient and bespoke shopping of a surprising variety for a town of its size. The Jurassic Coast is a few miles away and the surrounding countryside offers superb walking opportunities.



DESCRIPTION

A delightful mews house in a quiet tucked away position just off Beaminster Square within moments of cafes, shops and pubs. Arranged over two floors with a spacious kitchen leading into a sitting room bi-sected by a two side fireplace. Double doors lead onto a patio area and garden beyond. Upstairs is a spacious principle bedroom with double doors onto a balcony with fantastic views across the garden to countryside beyond. Two further single bedrooms and a family shower room complete the upstairs space.

The property would make an ideal second home, or permanent resident for someone wanting to be right in the heart of the town with amenities on the doorstep.

ACCOMODATION

Accommodation briefly comprises open plan kitchen and living room with French doors to the garden, utility room, WC, entrance hallway, three bedrooms and a family bathroom. Garden.

There is no formal parking with this property, but an annual permit for one of the nearby car parks can be easily obtained from the council.

SERVICES

Mains gas, drainage, electricity, standard brick and cavity construction under a tiled roof.

DIRECTIONS

On Beaminster Square proceed under the archway next to Nick Tett Butchers and the property will be found in the left hand corner.

VIEWINGS

Contact Stags Bridport to arrange an accompanied viewing

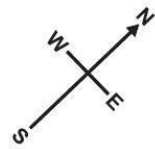
RESIDENTIAL LETTINGS

If you are considering investing in a Buy To Let or letting another property and require advice on current rents, yields or general lettings information to ensure you comply, please contact a member of our lettings team on 01308 428001 or via email rentals.bridport@stags.co.uk

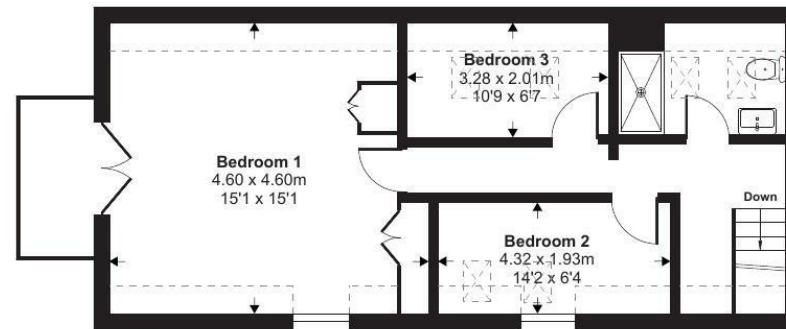


Approximate Area = 1038 sq ft / 96.4 sq m
 Limited Use Area(s) = 100 sq ft / 9.2 sq m
 Total = 1138 sq ft / 105.6 sq m

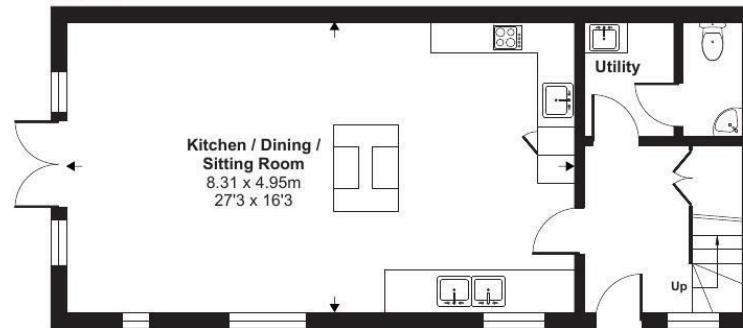
For identification only - Not to scale



Denotes restricted
head height



First Floor

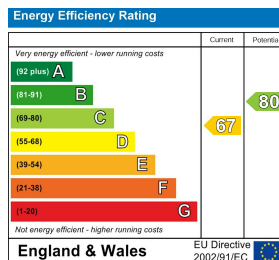


Ground Floor



Floor plan produced in accordance with RICS Property Measurement Standards incorporating International Property Measurement Standards (IPMS2 Residential). ©n/checom 2024. Produced for Stags. REF: 1181493

IMPORTANT: Stags gives notice that: 1. These particulars are a general guide to the description of the property and are not to be relied upon for any purpose. 2. These particulars do not constitute part of an offer or contract. 3. We have not carried out a structural survey and the services, appliances and fittings have not been tested or assessed. Purchasers must satisfy themselves. 4. All photographs, measurements, floorplans and distances referred to are given as a guide only. 5. It should not be assumed that the property has all necessary planning, building regulation or other consents. 6. Whilst we have tried to describe the property as accurately as possible, if there is anything you have particular concerns over or sensitivities to, or would like further information about, please ask prior to arranging a viewing.



32 South Street, Bridport, Dorset, DT6 3NQ

bridport@stags.co.uk

01308 428000



@StagsProperty

Cornwall | Devon | Somerset | Dorset | London