



Thoroughfare | | Halesworth | IP19 8AS

**£625 PCM**

**DURRANTS**  
SINCE 1853

## Key features

- Two Bedrooms
- Bathroom/WC
- Sitting Room
- Kitchen
- Electric Heating
- Second Floor
- Town Centre Location

## Description

Situated in the heart of Halesworth town centre this two bedroomed second floor flat. In addition to the bedrooms there is a kitchen/sitting area, a bathroom/WC and electric heating.

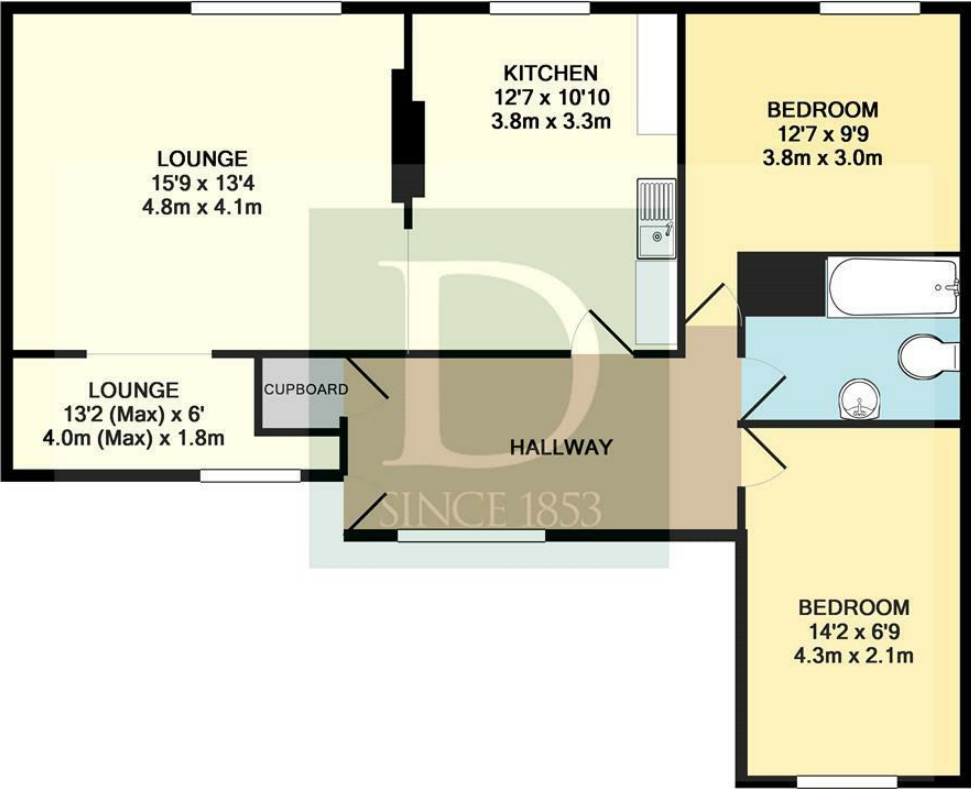
## Directions

The property is situated opposite the agents Halesworth office.





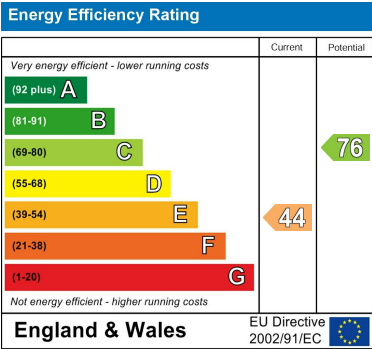
Floor plans



TOTAL APPROX. FLOOR AREA 827 SQ.FT. (76.8 SQ.M.)

Whilst every attempt has been made to ensure the accuracy of the floor plan contained here, measurements of doors, windows, rooms and any other items are approximate and no responsibility is taken for any error, omission, or mis-statement. This plan is for illustrative purposes only and should be used as such by any prospective purchaser. The services, systems and appliances shown have not been tested and no guarantee as to their operability or efficiency can be given

Made with Metropix ©2019



12 Thoroughfare  
Halesworth  
Suffolk  
IP19 8AH  
01986 872553  
halesworth@durrants.com  
<https://durrants.com/>