



Earls Close | Halesworth | Suffolk | IP19 8DT

**£980 PCM**

**DURRANTS**  
SINCE 1853

## Key features

- Sought After Location
- Two Large Bedrooms
- Two Reception Rooms
- Garage and Driveway
- Large Enclosed Garden
- Utility Room
- Brand New Kitchen
- Brand New Bathroom
- Conservatory

## Description

Beautifully presented 2 bedroom bungalow set close to the town centre. The property has been refurbished to a high standard throughout.

## Directions

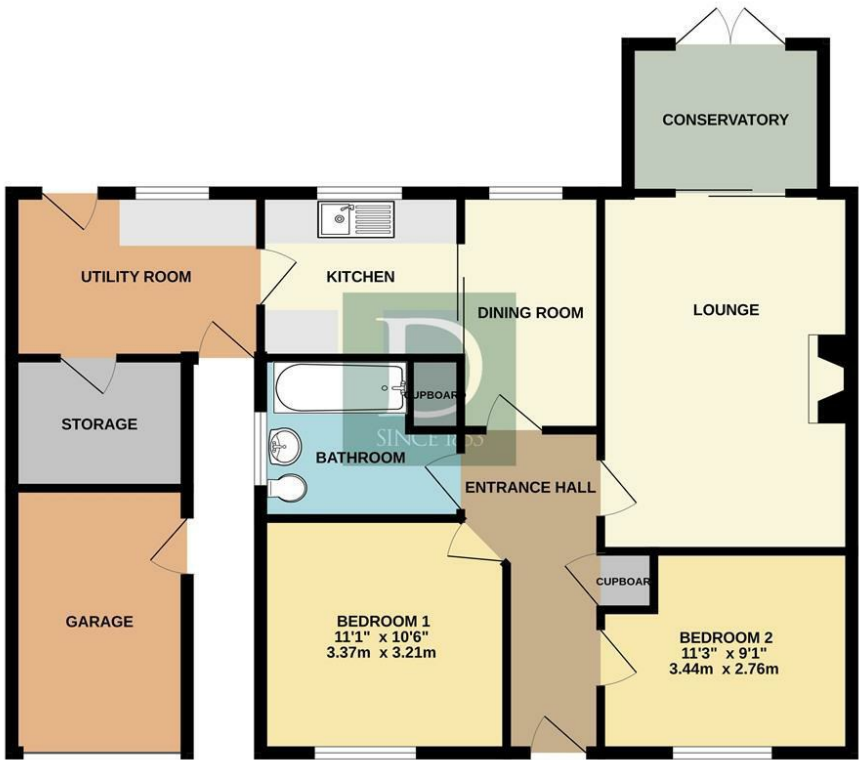




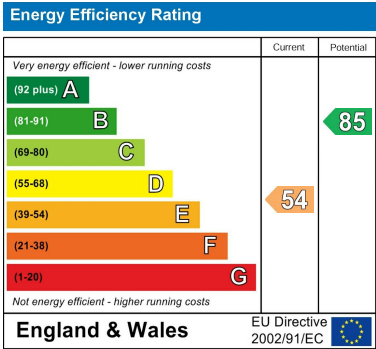


Floor plans

GROUND FLOOR  
943 sq.ft. (87.6 sq.m.) approx.



TOTAL FLOOR AREA: 943 sq.ft. (87.6 sq.m.) approx.  
Whilst every attempt has been made to ensure the accuracy of the floorplan contained here, measurements of doors, windows, rooms and any other items are approximate and no responsibility is taken for any error, omission or mis-statement. This plan is for illustrative purposes only and should be used as such by any prospective purchaser. The services, systems and appliances shown have not been tested and no guarantee as to their operability or efficiency can be given.  
Made with Metropix ©2023



12 Thoroughfare  
Halesworth  
Suffolk  
IP19 8AH  
01986 872553  
halesworth@durrants.com  
<https://durrants.com/>