



Watsons Close | Hopton | Great Yarmouth | NR31 9BJ

£925

DURRANTS
SINCE 1853

Key features

Description

Nestled in the charming coastal area of Hopton, Great Yarmouth, this delightful semi-detached bungalow on Watsons Close offers a perfect blend of comfort and convenience. With two well-proportioned bedrooms, this property is ideal for small families, couples, or those seeking a peaceful retirement retreat.

Upon entering, you are welcomed into a spacious reception room that provides a warm and inviting atmosphere, perfect for relaxation or entertaining guests. The layout is thoughtfully designed, ensuring a seamless flow throughout the home. The bungalow features a well-appointed shower room, catering to all your daily needs.

One of the standout features of this property is the ample parking space, accommodating up to two vehicles, along with a garage for additional storage or workshop potential. The paved rear garden is a lovely outdoor space, ideal for enjoying the fresh coastal air, hosting summer barbecues, or simply unwinding with a good book.

Situated in a desirable coastal location, this bungalow is conveniently close to local amenities, making daily errands and leisure activities easily accessible. Whether you fancy a stroll along the beach or exploring the nearby shops and cafes, everything you need is within reach.

This semi-detached bungalow at Watsons Close presents an excellent opportunity for those looking to embrace a relaxed coastal lifestyle while enjoying the comforts of home.

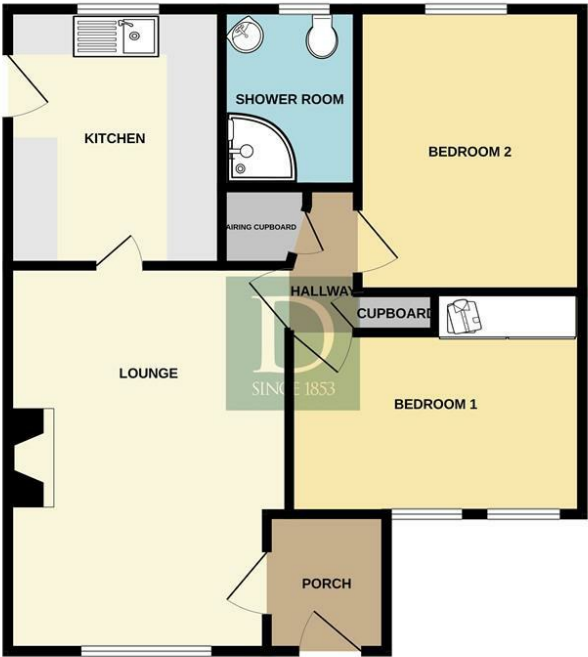
Directions



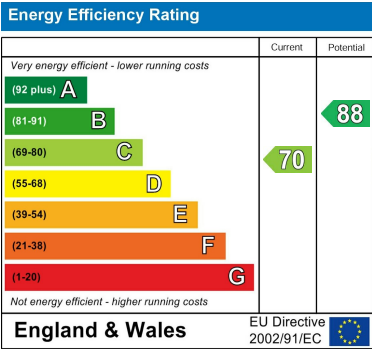


Floor plans

GROUND FLOOR
548 sq.ft. (50.9 sq.m.) approx.



BUNGALOW
TOTAL FLOOR AREA : 548 sq.ft. (50.9 sq.m.) approx.
Whilst every attempt has been made to ensure the accuracy of the floorplan contained herein, measurements of doors, windows, rooms and any other items are approximate and no responsibility is taken for any error, omission or mis-statement. This plan is for illustrative purposes only and should be used as such by any prospective purchasers. The services, systems and appliances shown have not been tested and no guarantee as to their operability or efficiency can be given.
Made with Metropix 62025



10 New Market
Beccles
Suffolk
NR34 9HA

01502 712122

infobeccles@durrants.com

<https://durrants.com/>