



Hill Farm Road | | Halesworth | IP19 8JX

£1,250 Per Month

DURRANTS
SINCE 1853

Key features

Description

Nestled on the charming Hill Farm Road in Halesworth, this delightful three-bedroom house offers a perfect blend of modern living and comfort. Built just a few years ago, the property boasts contemporary design and high-quality finishes throughout, making it an ideal choice for families or professionals seeking a stylish home.

As you step inside, you are greeted by a spacious and inviting atmosphere. The heart of the home is undoubtedly the modern kitchen, which is equipped with sleek appliances and ample storage space, perfect for those who enjoy cooking and entertaining. The open-plan layout allows for a seamless flow between the kitchen and living areas, creating a warm and welcoming environment. The three generously sized bedrooms provide plenty of room for relaxation and personal space.

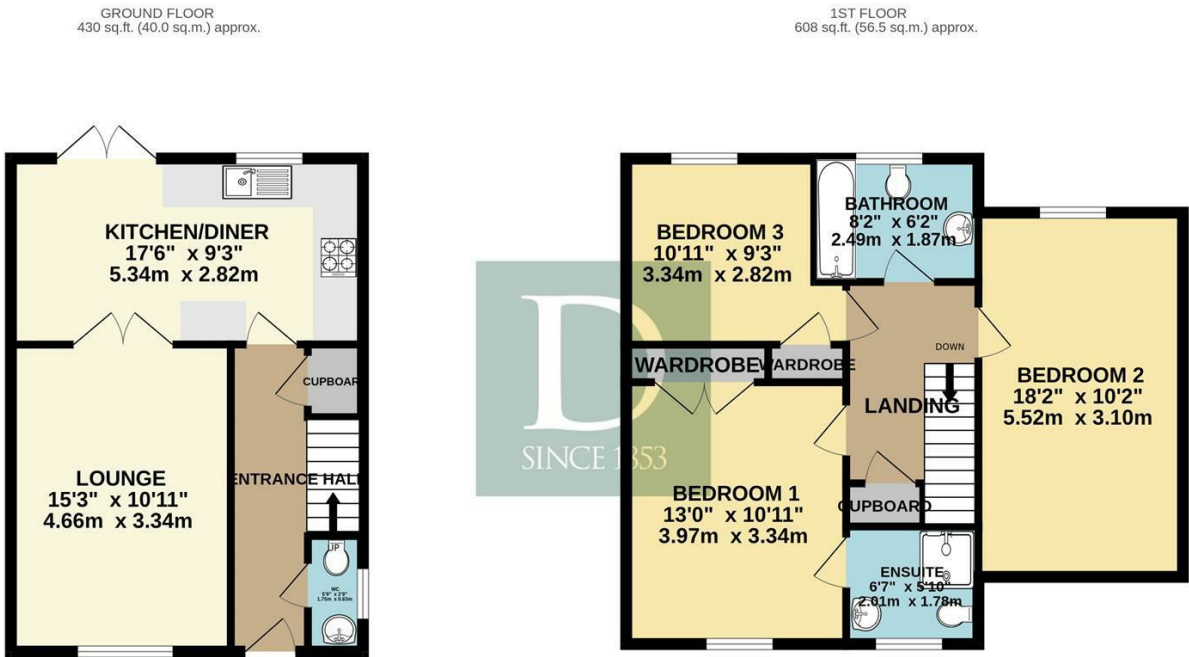
Located in the peaceful town of Halesworth, you will benefit from a friendly community and easy access to local amenities, including shops, schools, and parks. The surrounding area offers beautiful countryside views, perfect for leisurely walks and outdoor activities.

Directions





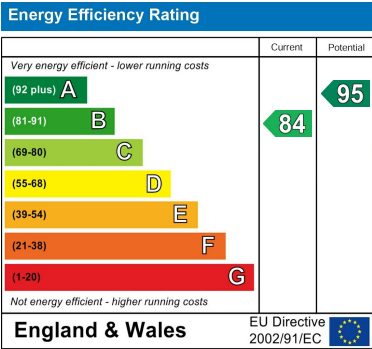
Floor plans



TOTAL FLOOR AREA : 1038 sq.ft. (96.5 sq.m.) approx.

Whilst every attempt has been made to ensure the accuracy of the floorplan contained here, measurements of doors, windows, rooms and any other items are approximate and no responsibility is taken for any error, omission or mis-statement. This plan is for illustrative purposes only and should be used as such by any prospective purchaser. The services, systems and appliances shown have not been tested and no guarantee as to their operability or efficiency can be given.

Made with Metropix ©2025



12 Thoroughfare
Halesworth
Suffolk
IP19 8AH
01986 872553
halesworth@durrants.com
<https://durrants.com/>