



Youngs Yard | | Southwold | IP18 6JE

£895 PCM

**DURRANTS**  
SINCE 1853



## Key features

- 2 Bedrooms
- Kitchen/ Breakfast room
- Walled Courtyard Garden
- Parking

## Description

Nestled in the charming town of Southwold, this delightful traditional cottage at 2 Youngs Yard offers a perfect blend of comfort and character. With two well-proportioned bedrooms, this property is ideal for small families, couples, or those seeking a peaceful retreat by the coast.

The inviting reception room serves as a warm welcome, providing a cosy space for relaxation or entertaining guests. The cottage features a well-appointed bathroom, ensuring convenience for everyday living.

One of the standout features of this property is its lovely courtyard garden, a perfect spot for enjoying the fresh air or simply unwinding with a good book.

Located close to local amenities, residents will find themselves just a short stroll away from shops, cafes, and the stunning Southwold beach. This prime location allows for easy access to the vibrant community and all that this picturesque seaside town has to offer.

This traditional cottage is not just a home; it is a lifestyle choice, offering a unique opportunity to embrace the charm of Southwold living. Whether you are looking for a permanent residence or a holiday getaway, this property is sure to impress.

## Directions

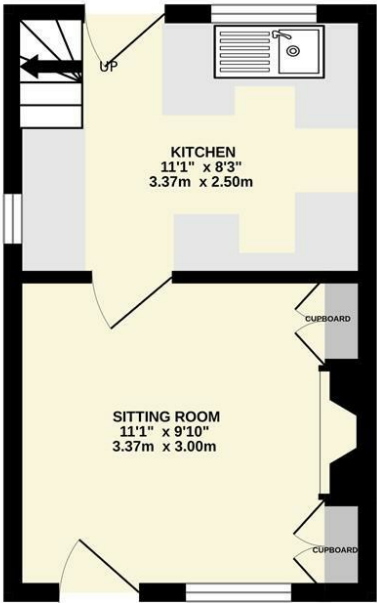
Applicants are advised to proceed from the Agents Southwold Office, turn left and immediate left into Church Street. At the T junction turn left into Victoria Street and after approximately 100 yards, turn left into Youngs Yard.



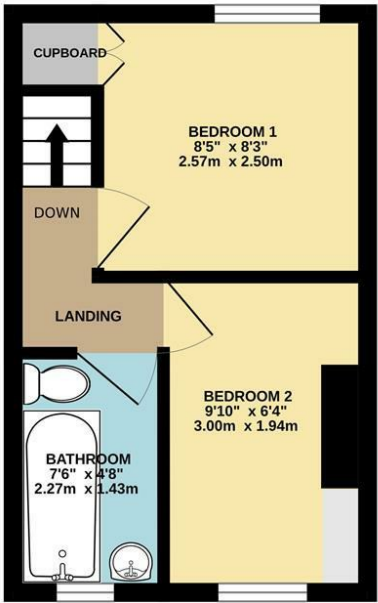


Floor plans

GROUND FLOOR  
195 sq.ft. (18.1 sq.m.) approx.

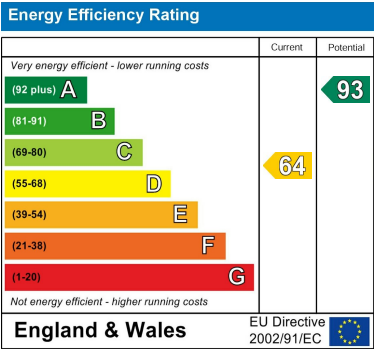


1ST FLOOR  
195 sq.ft. (18.1 sq.m.) approx.



TOTAL FLOOR AREA : 390 sq.ft. (36.3 sq.m.) approx.

Whilst every attempt has been made to ensure the accuracy of the floorplan contained here, measurements of doors, windows, rooms and any other items are approximate and no responsibility is taken for any error, omission or mis-statement. This plan is for illustrative purposes only and should be used as such by any prospective purchaser. The services, systems and appliances shown have not been tested and no guarantee as to their operability or efficiency can be given.  
Made with Metropix ©2024



98 High Street  
Southwold  
Suffolk  
IP18 6DP  
01502 723292  
southwold@durrants.com  
<https://durrants.com/>