



Exchange Square | | Beccles | NR34 9HJ

£950

DURRANTS
SINCE 1853

Key features

- Central Location
- Newly Developed
- 2 Bedrooms
- Separate Shower Room and W/c
- Open Plan Kitchen, Lounge, Diner
- Set Over 3 Floors

Description

Nestled in the heart of Beccles, this newly developed two-bedroom apartment offers a modern living experience across three thoughtfully designed floors. The property boasts a spacious open plan kitchen, lounge, and dining area, perfect for both entertaining guests and enjoying quiet evenings at home.

With one reception room, the layout is both practical and inviting, allowing for a seamless flow between spaces. The two well-proportioned bedrooms provide ample room for relaxation, while the shower room and separate w/c is conveniently located to serve both bedrooms and guests alike.

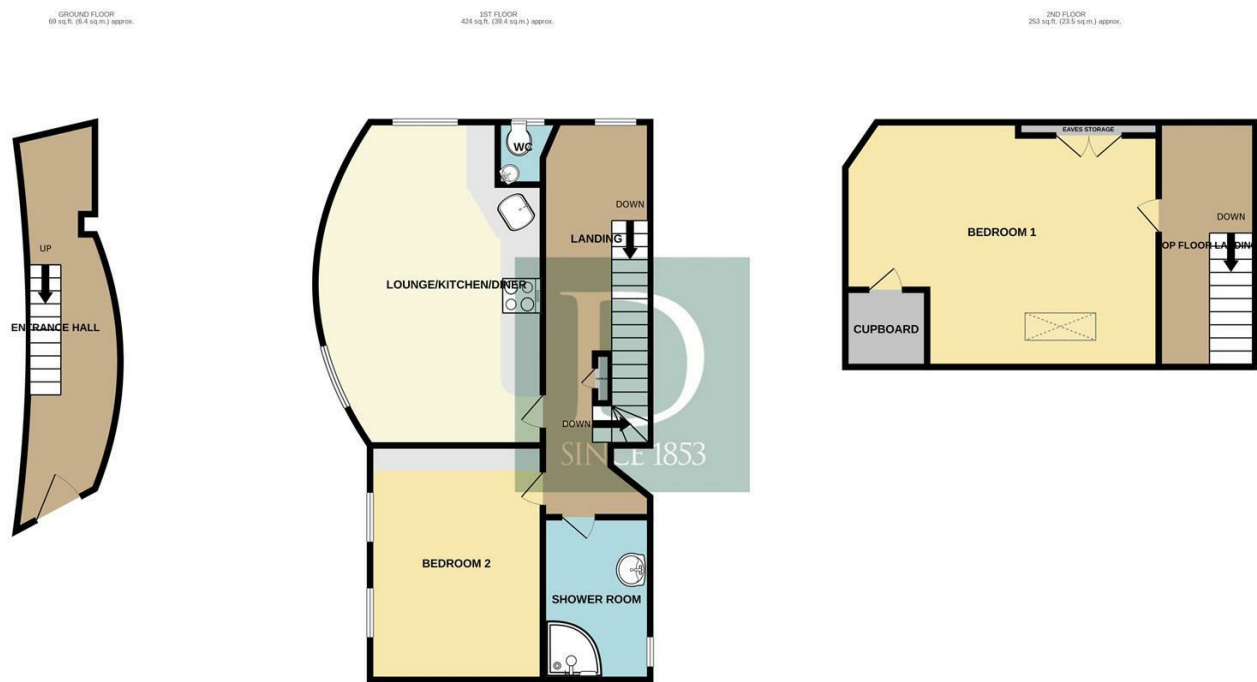
Situated in a central location, residents will benefit from easy access to local amenities, shops, and transport links, making it an ideal choice for those seeking a vibrant community atmosphere.

Directions





Floor plans



TOTAL FLOOR AREA : 746 sq.ft. (69.3 sq.m.) approx.

Whilst every attempt has been made to ensure the accuracy of the floorplan contained here, measurements of doors, windows, rooms and any other items are approximate and no responsibility is taken for any error, omission or mis-statement. This plan is for illustrative purposes only and should be used as such by any prospective purchaser. The services, systems and appliances shown have not been tested and no guarantee as to their operability or efficiency can be given.

Made with Metropix ©2025

Energy Efficiency Rating		
	Current	Potential
Very energy efficient - lower running costs		
(92 plus) A		
(81-91) B		
(69-80) C		
(55-68) D		
(39-54) E		
(21-38) F		
(1-20) G		
Not energy efficient - higher running costs		
England & Wales	EU Directive 2002/91/EC	



10 New Market
Beccles
Suffolk
NR34 9HA
01502 712122

infobeccles@durrants.com
<https://durrants.com/>