



Hillfield Court | Reydon | Southwold | IP18 6RU

£1,395 PCM

**DURRANTS**  
SINCE 1853



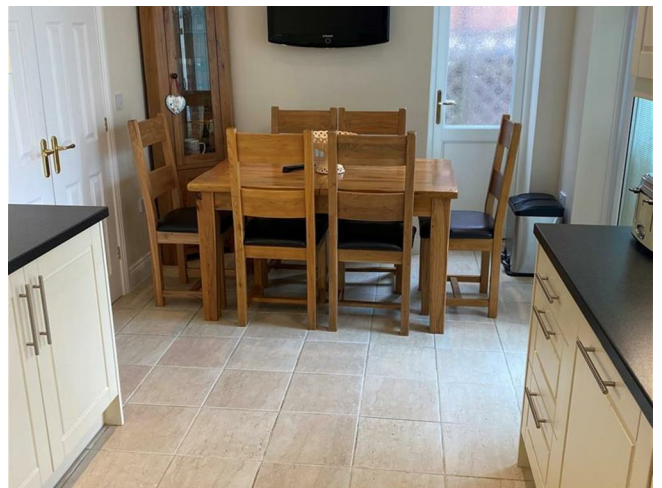
## Key features

- Semi-Detached House
- Garage
- Driveway
- Private Rear Garden
- 3 Bedrooms
- 2 Bathrooms (1 Ensuite)
- Conservatory
- Gas Central Heating

## Description

Durrants are delighted to be able to offer to let, this charming semi-detached 3 bedroom house in Reydon, it offers spacious modern living areas, a modern kitchen, and a private garden. The property boasts a prime location with easy access to local amenities and stunning coastal walks. With ample natural light and comfortable living spaces, this home provides a perfect blend of comfort and convenience.

## Directions







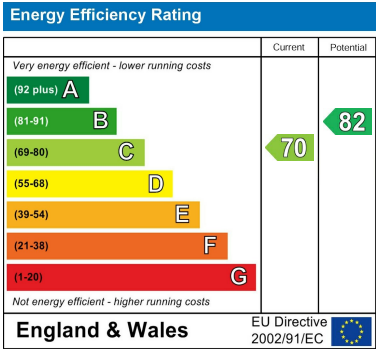
Floor plans



TOTAL FLOOR AREA: 943 sq.ft. (87.6 sq.m.) approx.

Whilst every attempt has been made to ensure the accuracy of the floorplan contained here, measurements of doors, windows, rooms and any other items are approximate and no responsibility is taken for any error, omission or mis-statement. This plan is for illustrative purposes only and should be used as such by any prospective purchaser. The services, systems and appliances shown have not been tested and no guarantee as to their operability or efficiency can be given.

Made with Metropix ©2024



98 High Street  
Southwold  
Suffolk  
IP18 6DP  
01502 723292  
southwold@durrants.com  
<https://durrants.com/>