



Home Meadow | Laxfield | Woodbridge | IP13 8DG

£700 PCM

DURRANTS
SINCE 1853

Key features

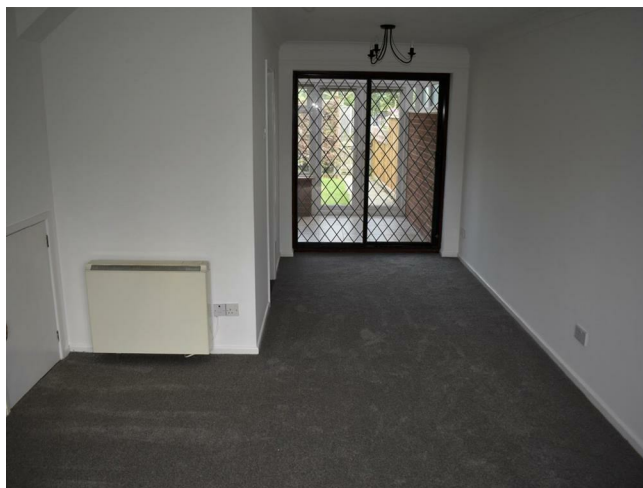
- Mid Terrace House
- Two Bedrooms
- Sitting Room
- Kitchen
- Conservatory
- Shower Room
- Electric Heating
- Off Road Parking
- Gardens Front & Rear

Description

Beautifully presented 2 bedroom modern house situated in the village of Laxfield. Kitchen, sitting room, conservatory, shower room, UPVC double glazing throughout, electric heating, off road parking and gardens front and rear.

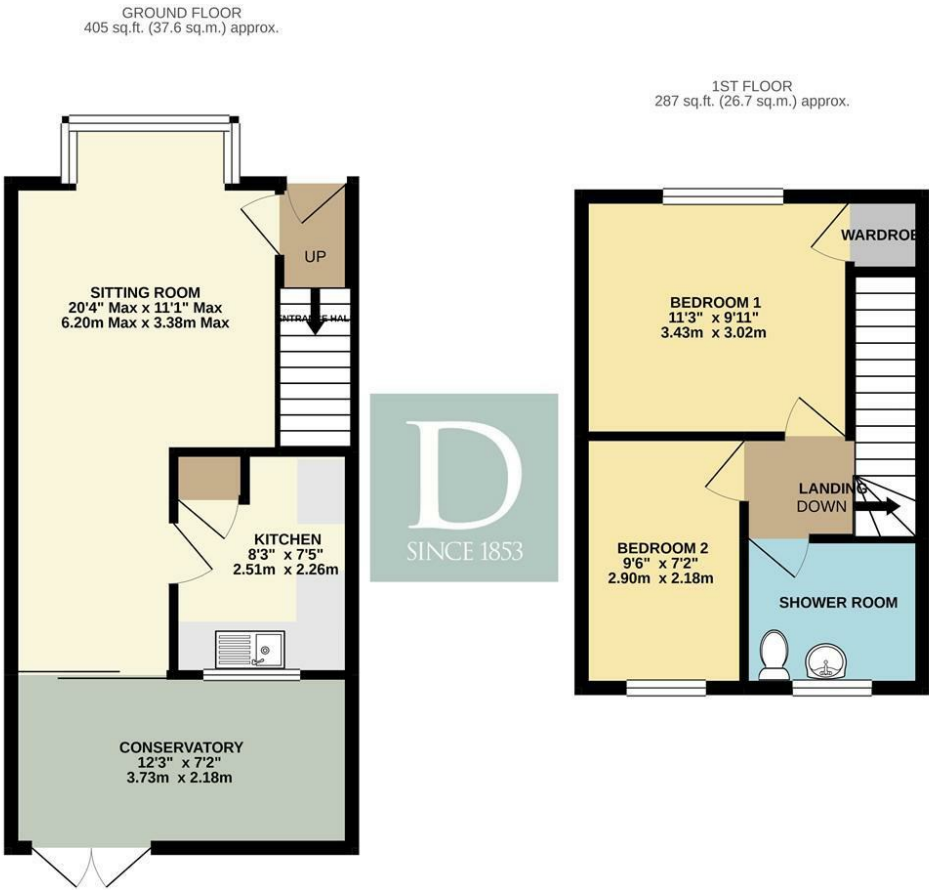
Directions

Leave Halesworth on the Walpole Road, proceed past Heveningham Hall and enter the village of Laxfield, follow the road round the sharp left hand bend and bear left at the War Memorial after approximately 200 yards turn right into Home Meadow where No 16 will be found on the right hand side.

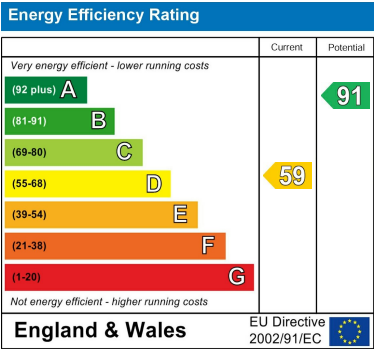




Floor plans



TOTAL FLOOR AREA : 692 sq.ft. (64.3 sq.m.) approx.
Whilst every attempt has been made to ensure the accuracy of the floorplan contained here, measurements of doors, windows, rooms and any other items are approximate and no responsibility is taken for any error, omission or mis-statement. This plan is for illustrative purposes only and should be used as such by any prospective purchaser. The services, systems and appliances shown have not been tested and no guarantee as to their operability or efficiency can be given.
Made with Metrepro ©2020



12 Thoroughfare
Halesworth
Suffolk
IP19 8AH
01986 872553
halesworth@durrants.com
<https://durrants.com/>