



Lowestoft Road | Reydon | Southwold | IP18 6RF

**£895 Per Month**

**DURRANTS**  
SINCE 1853



## Key features

- Well Presented Throughout
- Gas Central Heating
- Two Bedrooms
- Large Garden
- Two Off Road Parking Spaces
- Great Location

## Description

Nestled on the charming Lowestoft Road in Reydon, this delightful semi-detached house presents an excellent opportunity for those seeking a comfortable and inviting home. With two well-proportioned bedrooms, this property is ideal for small families, couples, or individuals looking for a peaceful retreat.

One of the standout features of this residence is the ample parking space available for up to two vehicles, providing convenience and ease for homeowners and visitors alike. The location in Reydon is particularly desirable, offering a blend of tranquillity and accessibility to local amenities, making it a perfect spot for those who appreciate both nature and community.

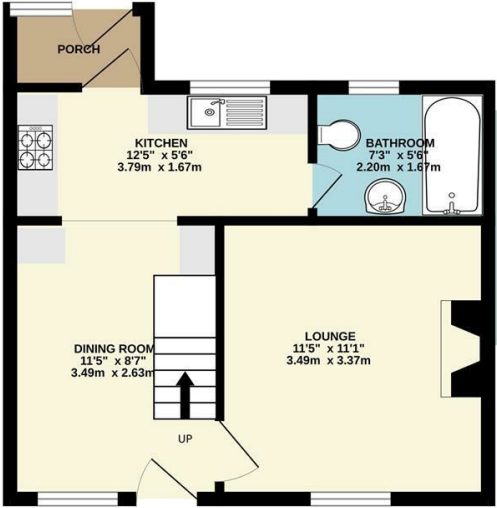
## Directions



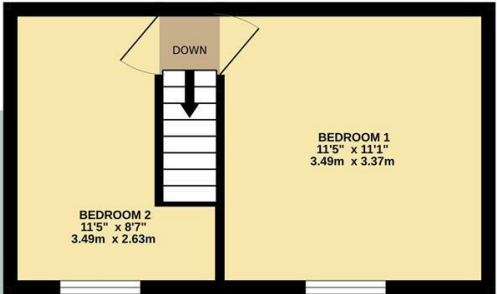


Floor plans

GROUND FLOOR  
344 sq.ft. (32.0 sq.m.) approx.



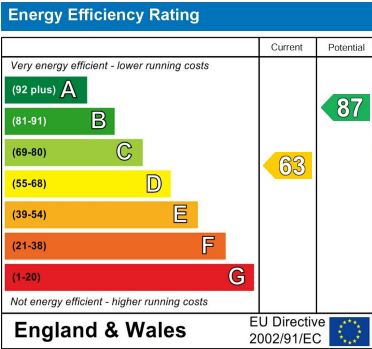
1ST FLOOR  
225 sq.ft. (20.9 sq.m.) approx.



TOTAL FLOOR AREA : 569 sq.ft. (52.9 sq.m.) approx.

Whilst every attempt has been made to ensure the accuracy of the floorplan contained here, measurements of doors, windows, rooms and any other items are approximate and no responsibility is taken for any error, omission or mis-statement. This plan is for illustrative purposes only and should be used as such by any prospective purchaser. The services, systems and appliances shown have not been tested and no guarantee as to their operability or efficiency can be given.

Made with Metropix ©2025



12 Thoroughfare  
Halesworth  
Suffolk  
IP19 8AH  
01986 872553  
halesworth@durrants.com  
<https://durrants.com/>