



2

Bedrooms



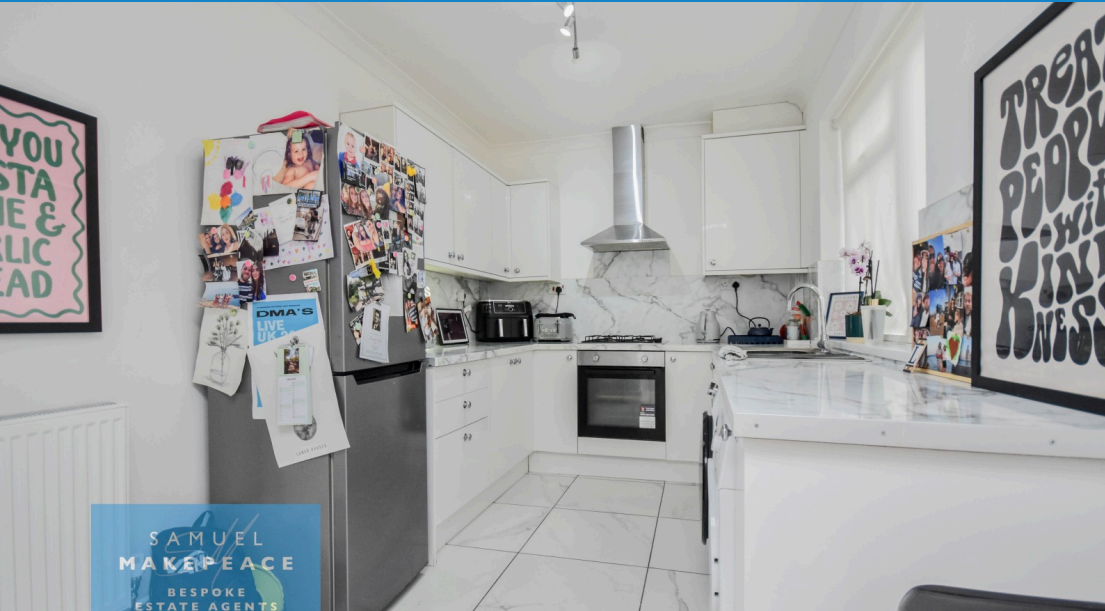
1

Bathroom

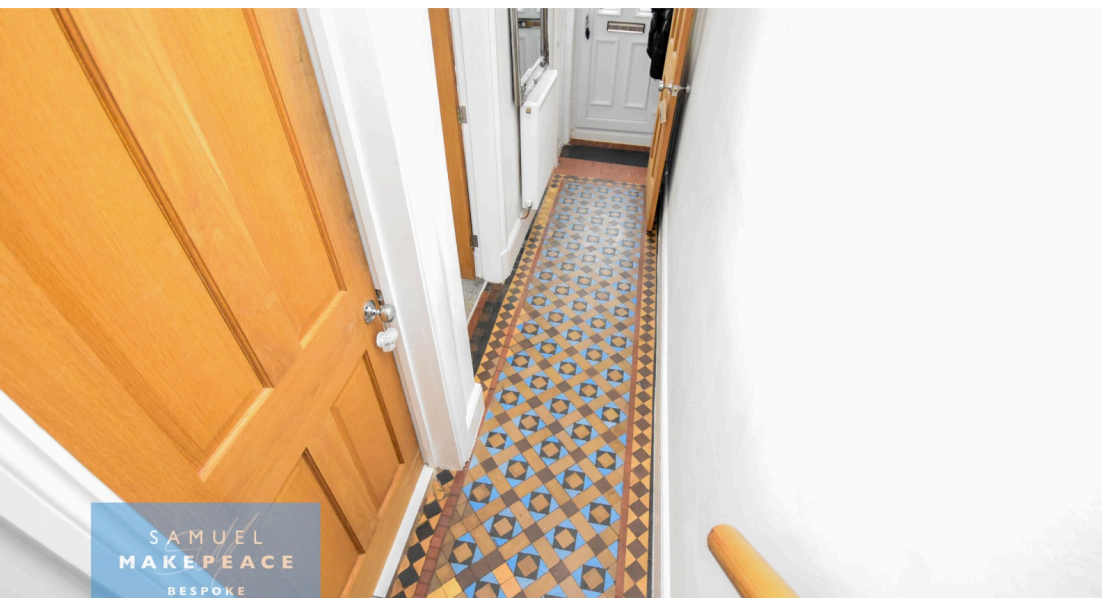


2

Receptions



- CHARMING TWO-BED END TERRACE IN PRIME LOCATION
- STUNNING MINTON TILED HALLWAY - FULL OF CHARACTER
- COZY LOUNGE WITH FEATURE ELECTRIC FIREPLACE
- OPEN-PLAN KITCHEN & DINER - ENTERTAINER'S DREAM
- FRENCH DOORS FILL THE HOME WITH NATURAL LIGHT
- TWO SPACIOUS DOUBLE BEDROOMS
- LUXURY BATHROOM WITH ROLL-TOP BATH & WALK-IN SHOWER
- PEACEFUL GARDEN WITH LAWN & SEATING AREA
- SET BACK FROM ROAD WITH ENCLOSED FORECOURT
- ACCESS TO CELLAR THROUGH KITCHEN

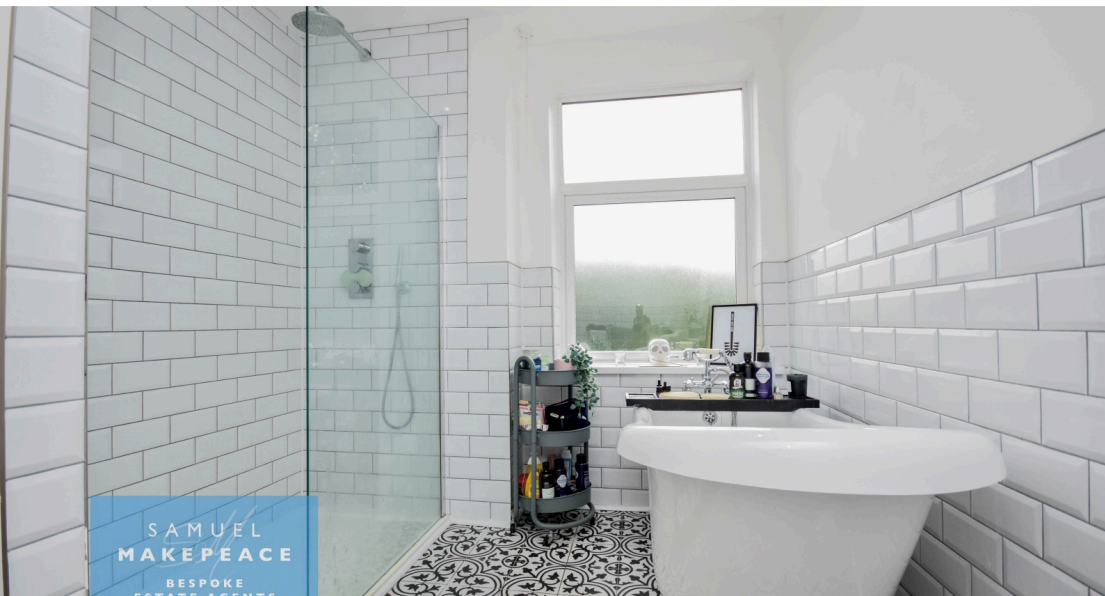


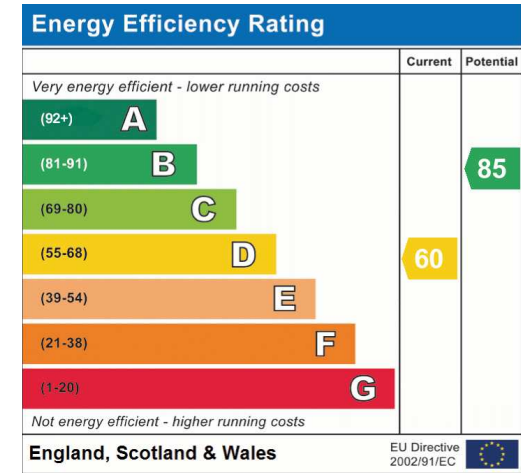
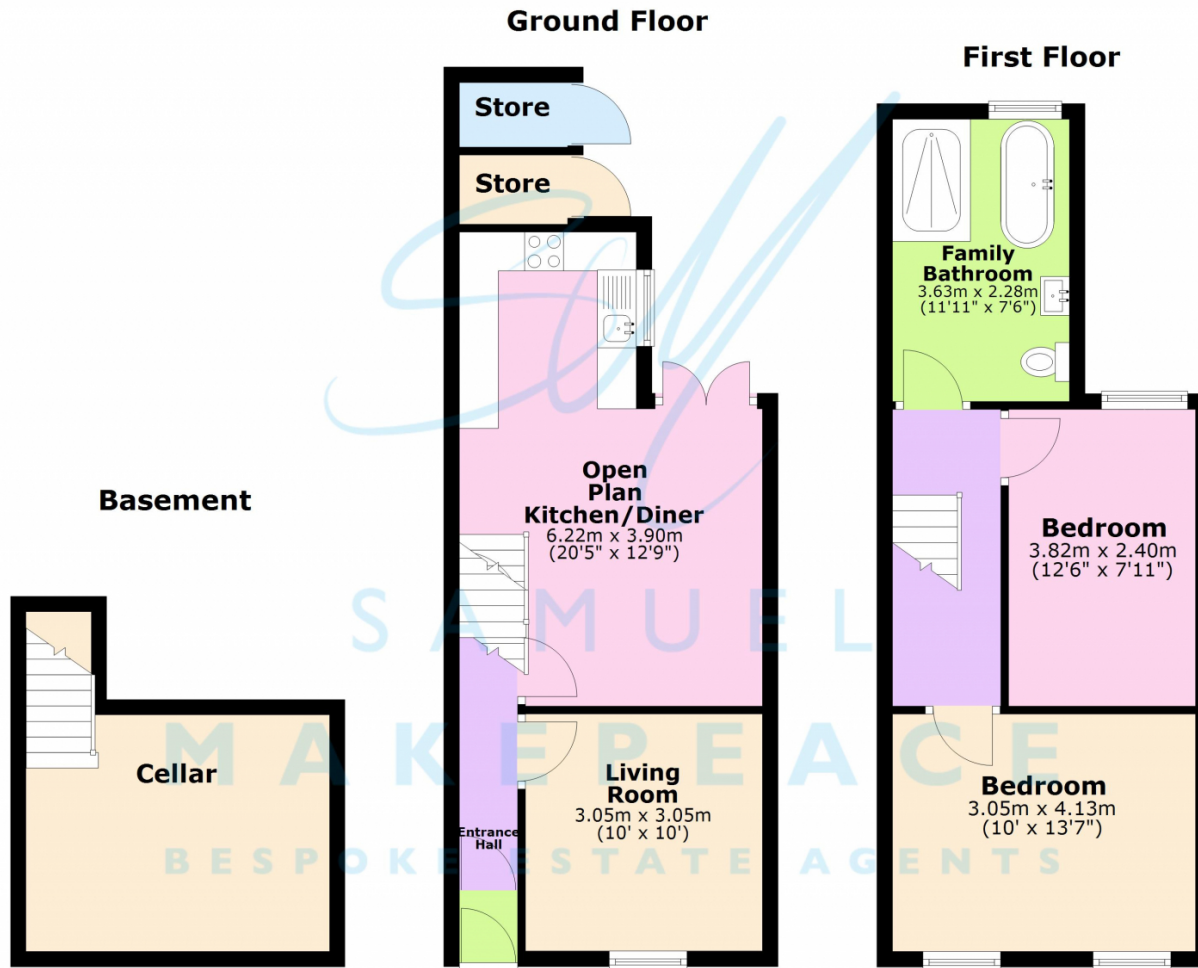
Has the future been looking a little dim? Well, it's time to brighten your outlook – welcome to **Dimsdale View East**, where **charm, character, and comfort** come together in perfect harmony. This **beautifully presented two-bedroom period** home seamlessly blends timeless character with modern comfort, offering a lifestyle of elegance and ease. From the moment you arrive, you'll be captivated by the exquisite original features – including the striking **Minton tiled hallway**, a true nod to the home's heritage. Step inside and be welcomed by the first of two delightful reception rooms, currently serving as a cozy and light-filled living area. A feature fireplace adds a touch of warmth and charm, creating the perfect place to relax and unwind. Flowing effortlessly into the second reception space, you'll discover a stunning **open-plan kitchen and dining area** – a contemporary masterpiece that's truly the heart of the home. Designed with both entertaining and everyday living in mind, it's a dream for any home chef. Bathed in natural light from **elegant French doors**, this space invites the outdoors in, creating a bright and uplifting atmosphere ideal for family meals or weekend brunches. There is also access to the cellar from the kitchen, which is ripe for further development, if you don't mind a spider or two! Upstairs, you'll find two spacious **double bedrooms**, each filled with natural light and charm. The **luxurious family bathroom** is a sanctuary in itself, featuring a chic free-standing **roll-top bath** and a generous **walk-in double shower**, perfect for unwinding in style. Outside, the magic continues. The rear garden offers a serene haven with a manicured lawn and a paved seating area – your very own private escape for quiet mornings or summer evenings. At the front, the home is set back from the road with an enclosed forecourt, adding a sense of privacy and grandeur to your entrance. This is more than a home – it's a lifestyle. A perfect blend of history, style, and comfort, waiting to be yours.

Don't miss your chance to fall in love – contact **Samuel Makepeace Bespoke Estate Agents** today to arrange your viewing.

Disclaimer:

All property particulars are provided in good faith and are believed to be accurate to the best of our knowledge at the time of publication. Samuel Makepeace (Newcastle & Stoke) Ltd t/a Samuel Makepeace Bespoke Estate Agents cannot accept any responsibility for any errors, omissions, or misstatements. Prospective purchasers are advised to verify the details independently and should not rely solely on the information provided when making decisions.





Address: 19 Dimsdale View East, ST5

Scan me for more info

