



3

Bedrooms



1

Bathroom

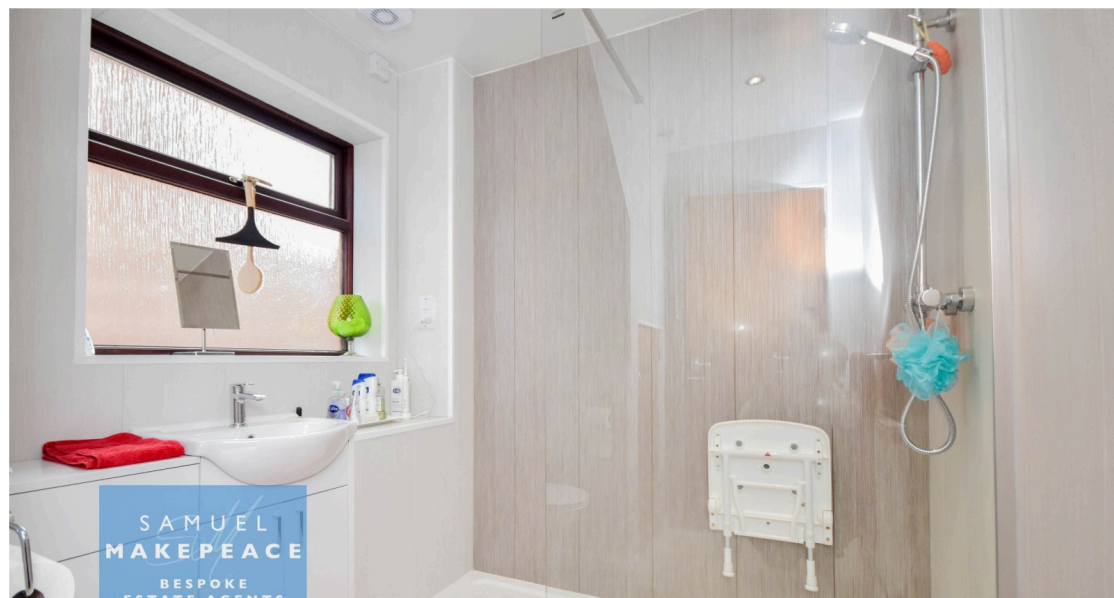
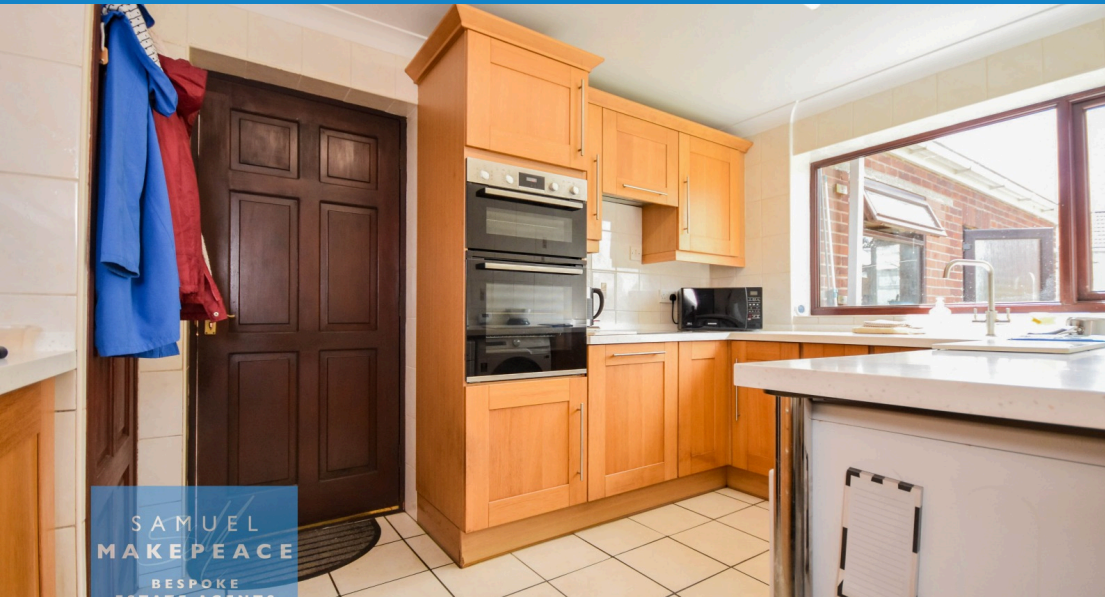


1

Reception



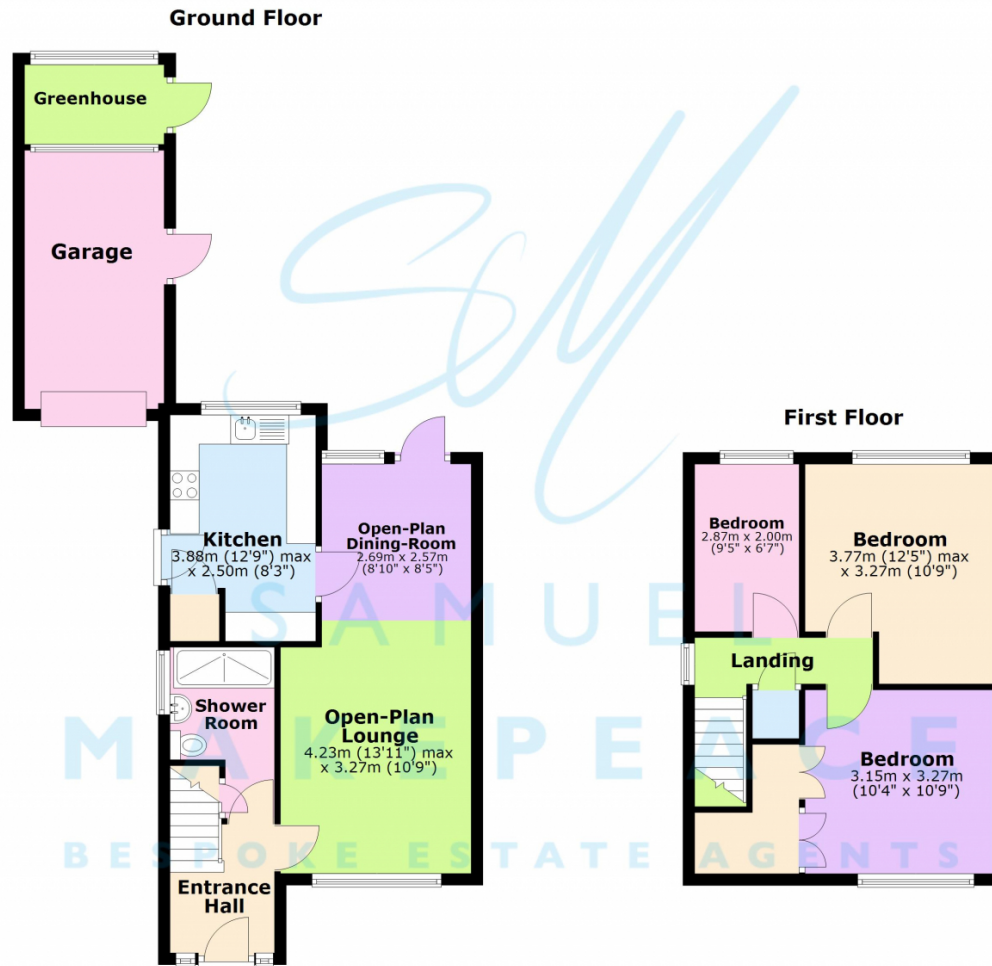
- **LOVELY THREE BEDROOM DETACHED HOME** with **DETACHED GARAGE**
- **SPACIOUS, OPEN-PLAN LOUNGE/DINER** with gas fireplace and sleek laminate flooring
- **SEPARATE MODERN KITCHEN** with integrated appliances and quartz work surfaces
- **CONTEMPORARY DOWNSTAIRS SHOWER ROOM** with double shower cubicle and vanity units
- **THREE AMAZING SIZED BEDROOMS**
- **LARGE MASTER BEDROOM** benefitting from a variety of fitted wardrobes



Built on love, not just SAND - a cherished family home on Sandown Place.

Welcome to SANDown Place, where homes are more than houses - they're foundations for life. After over 40 wonderful years, this three bedroom detached gem is ready to pass its legacy on to a new family. Set in a peaceful cul-de-sac in Milton, this home offers space, warmth, and a story built not just on sand, but on heart. At the front, a spacious driveway easily fits multiple vehicles, bordered by a neat lawn - the perfect introduction to this inviting home. Step inside and you're welcomed by a bright, inviting entrance hall that flows effortlessly into the open-plan lounge/diner. With large windows, laminate flooring, and a cosy gas fireplace, it's a room full of natural light and family comfort. A patio door from the dining area opens straight into the garden - ideal for summer evenings and BBQs. The modern kitchen is thoughtfully designed with sleek quartz worktops, integrated appliances, and plenty of cupboard space - perfect for busy family life or casual entertaining. Downstairs, also boasts a stylish shower room, featuring a double shower cubicle and contemporary vanity units. Upstairs, you'll find three impressively sized bedrooms, including a master bedroom with fitted wardrobes that maximise storage without sacrificing space. Step outside and discover a private garden oasis, complete with lawned areas, decorative flower beds, mature shrubs, and even a greenhouse - ideal for keen gardeners or simply soaking up the sun. The detached garage is another standout feature - with an electric door, power, and plumbing, it's perfect as a workshop, utility area, or extra storage. Sandown Place is a street where families settle in, grow roots, and make memories. Spacious, stylish, and full of love, it's ready to welcome a new family to make it their own. **Don't miss your chance to own this rare find - Contact Samuel Makepeace Bespoke Estate Agents Today!**





Scan me for more info

