



4

Bedrooms



2

Bathrooms

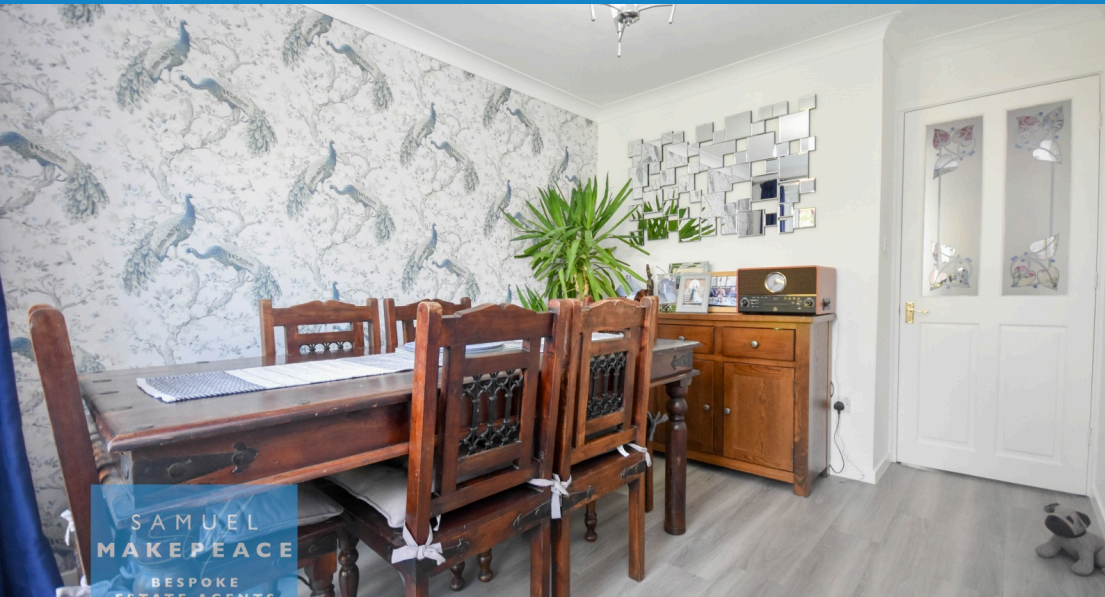


2

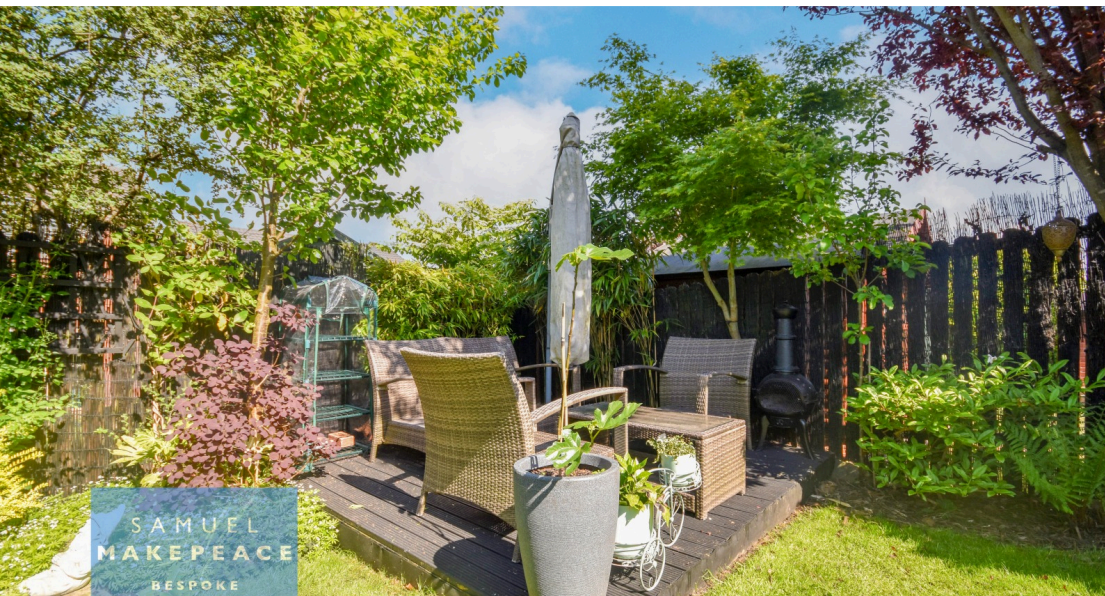
Receptions

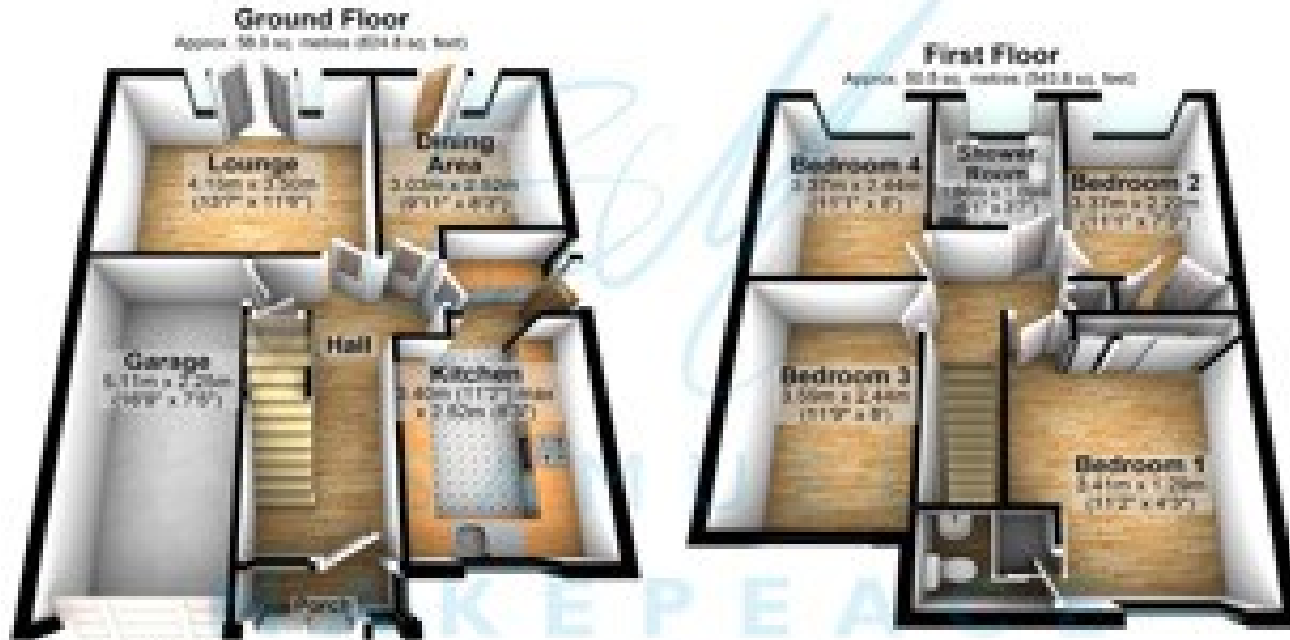


- 4 BED DETACHED PROPERTY ON SOUGHT AFTER WATERHAYES
- LOVELY LOUNGE WITH PATIO DOORS ONTO GARDEN
- IMMACULATE MODERN KITCHEN WITH BUILT IN APPLIANCES
- SEPARATE UTILITY ROOM AND DINING ROOM
- DOWNSTAIRS WC
- INTEGRATED GARAGE
- MAIN BEDROOM WITH FITTED WARDROBES AND EN-SUITE
- TILED SHOWER ROOM
- CLOSE TO LOCAL AMENITIES



Fed up of these dull 'summer' days? I've got something to BRIGHTEN YOUR DAY! A FANTASTIC 4 BED DETACHED on 'LIGHT'WOOD ROAD... Step inside the porch and open the front door and you will be greeted by the ENTRANCE HALL, accessing all the rooms from here, lets go down to the LOVELY LOUNGE a spacious room, with PATIO DOORS opening onto the garden. Into the IMMACULATE MODERN KITCHEN and you will find a flurry of INTEGRATED APPLIANCES and PLENTY OF CUPBOARD SPACE. There is also a SEPARATE UTILITY and a great sized DINING ROOM. Downstairs is finished off with the DOWNSTAIRS WC and also access to the INTEGRAL GARAGE. Lets go upstairs and into the MAIN BEDROOM a GREAT SIZED ROOM with BUILT IN WARDROBES and EN-SUITE with SHOWER. The other three bedrooms are all GOOD SIZED BEDROOMS, the SECOND BEDROOM COMES WITH MORE BUILT IN STORAGE SPACE. Outside, you will find a ENCLOSED PRIVATE REAR GARDEN with side access. The front has a DRIVE FOR MULTIPLE VEHICLES and a LAWNED GARDEN. So if your ready for brighter days, give SAMUEL MAKEPEACE BESPOKE ESTATE AGENTS A CALL TODAY!





| Energy Efficiency Rating | | |
|---|----------|-----------|
| | Current | Potential |
| Very energy efficient - lower running costs | | |
| (92+) | A | |
| (81-91) | B | |
| (69-80) | C | |
| (55-68) | D | |
| (39-54) | E | |
| (21-38) | F | |
| (1-20) | G | |
| Not energy efficient - higher running costs | | |
| England, Scotland & Wales <small>EU Directive 2002/91/EC</small> | | |

Address: Lightwood Road, Waterhayes, Newcastle-under-Lyme

Scan me for more info

