



3

Bedrooms



1

Bathroom



2

Receptions





- BEAUTIFULLY PRESENTED FAMILY HOME
- MOVE-IN READY
- TRADITIONAL 1930s FEATURES SUCH AS MINTON TILED FLOORING AND LARGE BAY WINDOWS
- LOUNGE AND SEPARATE KITCHEN
- FULLY FITTED KITCHEN WITH AN ARRAY OF INTEGRATED APPLIANCES
- THREE GREAT SIZED BEDROOMS
- CONTEMPORARY FAMILY BATHROOM
- SPACIOUS FRONT GARDEN WITH OFF-ROAD PARKING
- PRIVATE ENCLOSED GARDEN TO THE REAR







Nestled on the prestigious Garnett Road West in Porthill, this sparkling 1930s semi-detached home is a real treasure, offering a perfect blend of classic charm and modern elegance. As you enter, the original Minton tiled flooring in the entrance hall, lounge, and dining room gleams like polished gemstones, immediately setting the tone for this beautiful property. The bay windows in the lounge and dining room flood the space with natural light, giving it a gem-like radiance that shines through every corner. The modern fitted kitchen, equipped with integrated appliances, is the heart of the home, with sleek surfaces that shine as brightly as a diamond. Upstairs, the property boasts three spacious bedrooms, each one a tranquil sanctuary, and a family bathroom that has been designed to be as pristine as a well-cut sapphire. Outside, the enclosed rear garden offers a private oasis, while the front garden features a driveway and large detached garage—perfect for securely parking your prized possessions. With every detail carefully crafted, this home is a rare gem on the market, ready for you to unearth and make it your own. It's not just a house; it's a true precious find waiting to be discovered!

Entrance Hall - Double glazed window and door. Under stairs storage cupboard. Radiator. Original Minton tiled flooring.

Lounge - Double glazed bay window. Luxury vinyl tiled flooring. Radiator.

Dining Room - Double glazed bay window. Luxury vinyl tiled flooring. Radiator.

Kitchen - Double glazed window and door. A modern fitted kitchen with a range of wall and base units, a sink and drainer, work surfaces and tiled splashbacks. Integrated appliances include a microwave, fridge freezer, Hotpoint washing machine, Prima dishwasher and built in double Hotpoint cooker and Neff electric hob with cookerhood above. Laminate wood flooring. Radiator.

Landing - Double glazed window.

Bedroom One - Double glazed window, radiator.

Bedroom Two - Double glazed window, radiator.

Bedroom Three - Double glazed window, radiator.

Family Bathroom - Double glazed window. Low level WC, Vanity unit with wash hand basin and bath with shower over. Tiling to walls and flooring. Radiator.

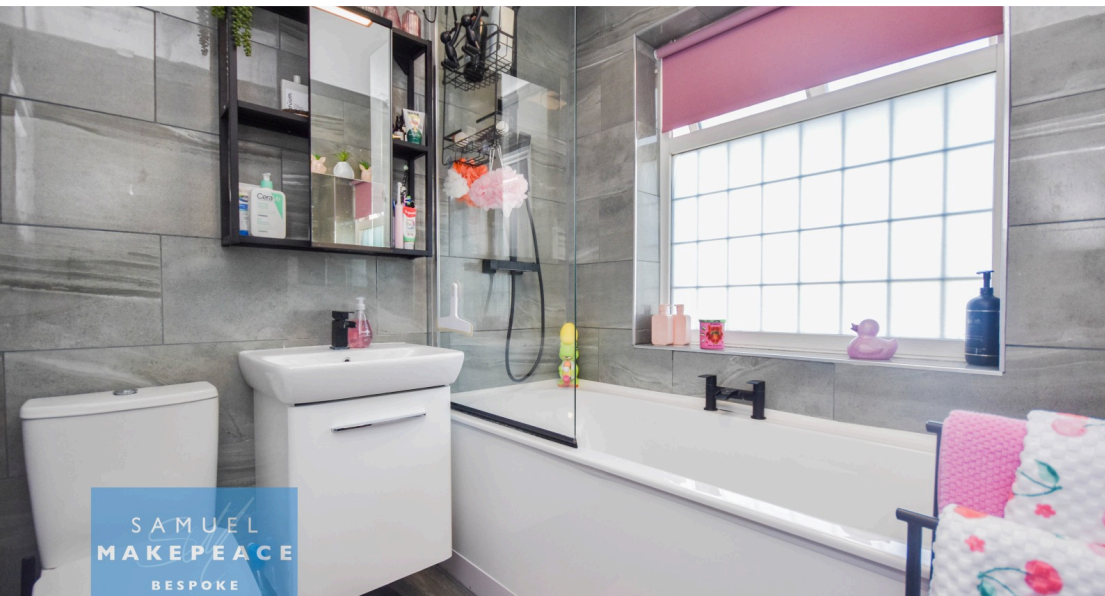
Front - Lawn area with off-road parking and mature decorative trees and shrubs.

Rear - Lawn and patio area.

Garage - Oversized garage with up and over doors, power and lighting.

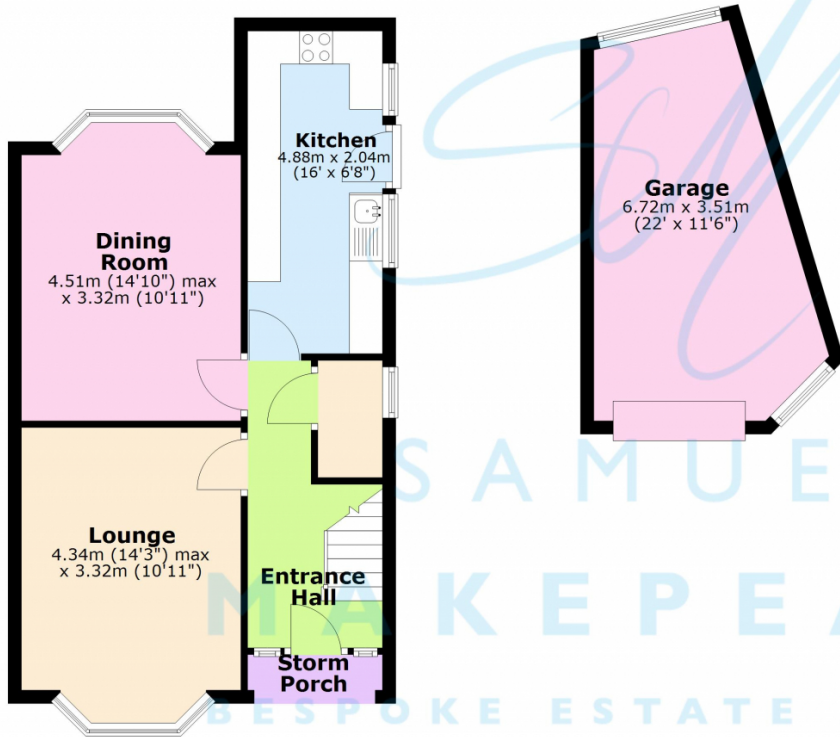




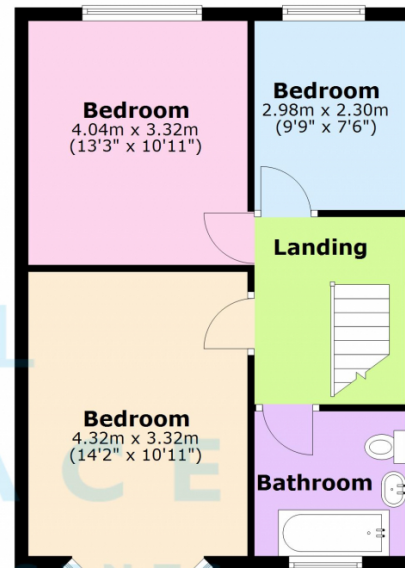




Ground Floor



First Floor



Scan me for more info

